

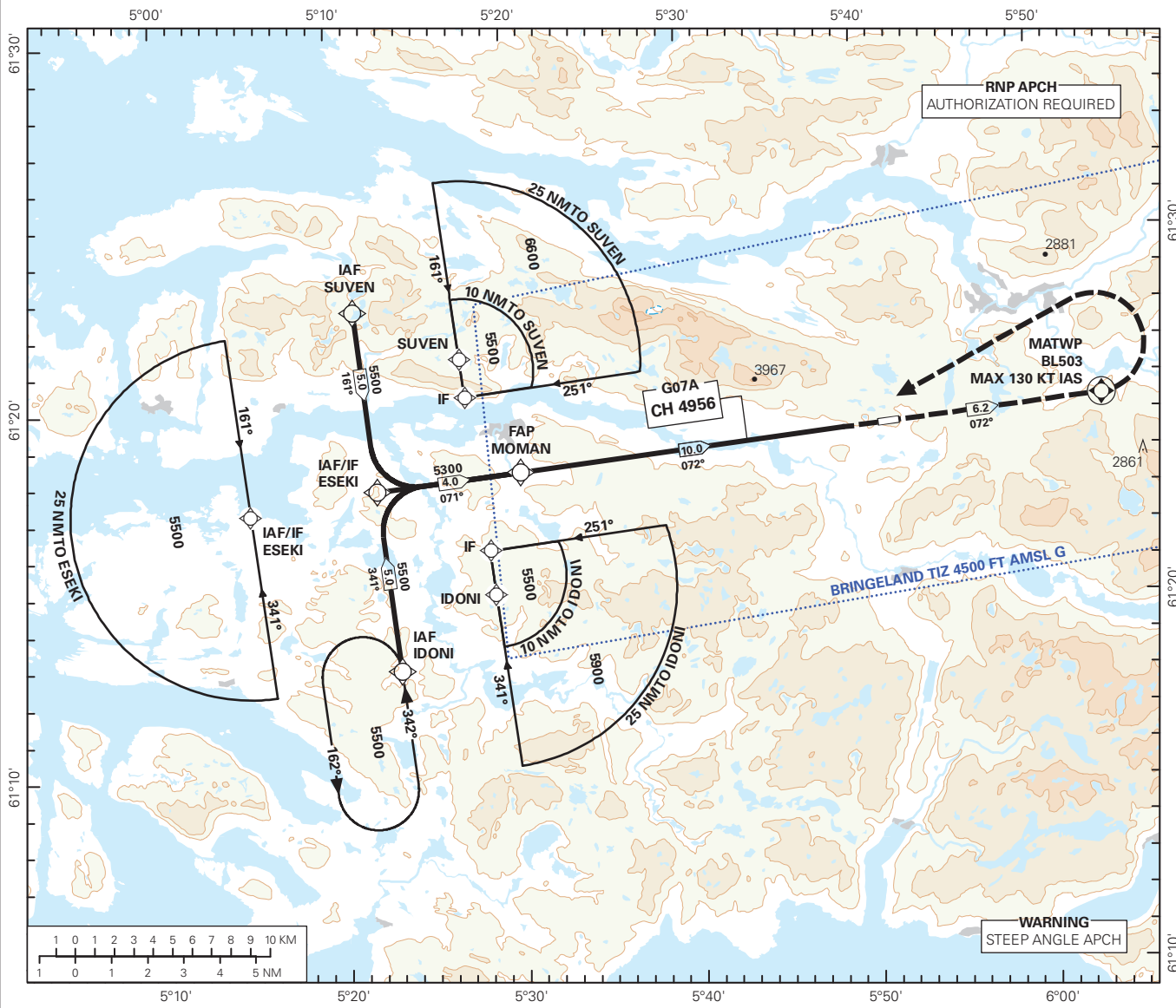
INSTRUMENT APPROACH CHART - ICAO PLAN VIEW SCALE: 1:350 000

FØRDE

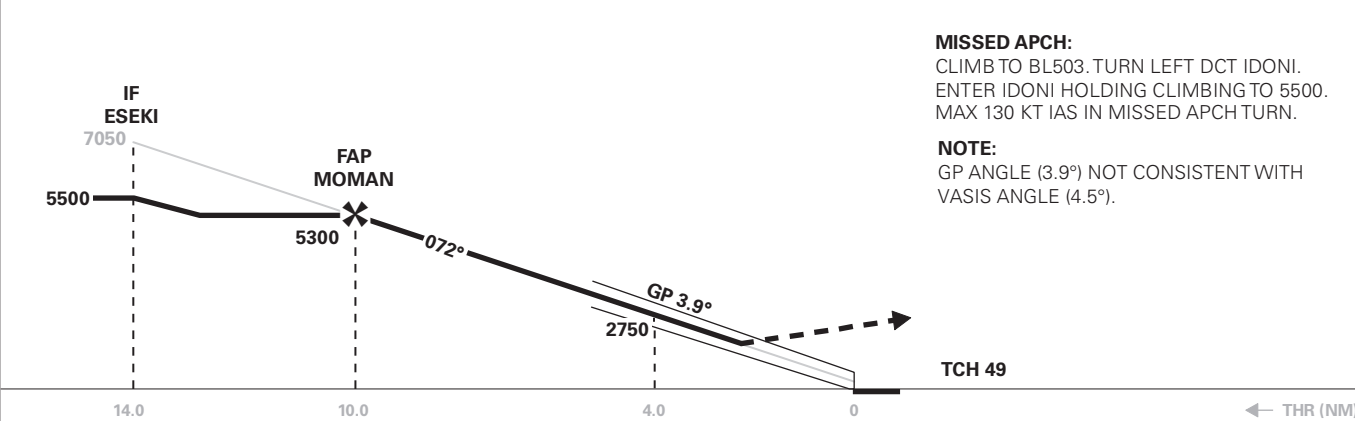
**BRINGELAND
GLS RWY 07**

ATIS: 131.155	AERODROME ELEVATION: 1045 FT	
AFIS: 118.455	THR ELEVATION: 1029 FT	DIST IN NM
	HGT RELATED TO THR RWY 07	ELEV, ALT AND HGT IN FT
CIRCLING HGT RELATED TO AD ELEV		TRANSITION ALTITUDE 7000
BEARINGS ARE MAGNETIC - VAR 2 ° E (2020)		

ATS AIRSPACE CLASSIFICATION: REF ENR 1.4



DIST TO THR	9	8	7	6	5	4	3	2
ALT (HGT)	4878 (3849)	4449 (3420)	4021 (2992)	3595 (2566)	3171 (2142)	2749 (1720)	2329 (1300)	1910 (881)



MISSED APCH:
CLIMB TO BL503. TURN LEFT DCT IDONI.
ENTER IDONI HOLDING CLIMBING TO 5500.
MAX 130 KT IAS IN MISSED APCH TURN.

NOTE:
GP ANGLE (3.9°) NOT CONSISTENT WITH
VASIS ANGLE (4.5°).

CHANGES: FREQUENCIES, EDITORIALS.

CAT OF ACFT	A	B	C	D	FINAL APPROACH							
					SPEED	KT	70	90	100	120	130	
OCA(H)	2.5%*	1961 (932)	1980 (951)	-	-	ROD	FT/MIN	485	620	690	830	900
SCAT - I	3.0%*	1754 (725)	1774 (745)	-	-							
CIRCLING	4.0%*	1549 (520)	1568 (539)	-	-							
	5.0%*	1387 (359)	1406 (378)	-	-							
CIRCLING		2090 (1045)	2970 (1925)	-	-							

NOTE: CIRCLING S OF AD ONLY. *MNM MISSED APCH CLIMB GRADIENT.