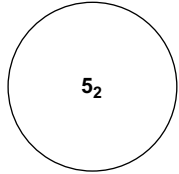
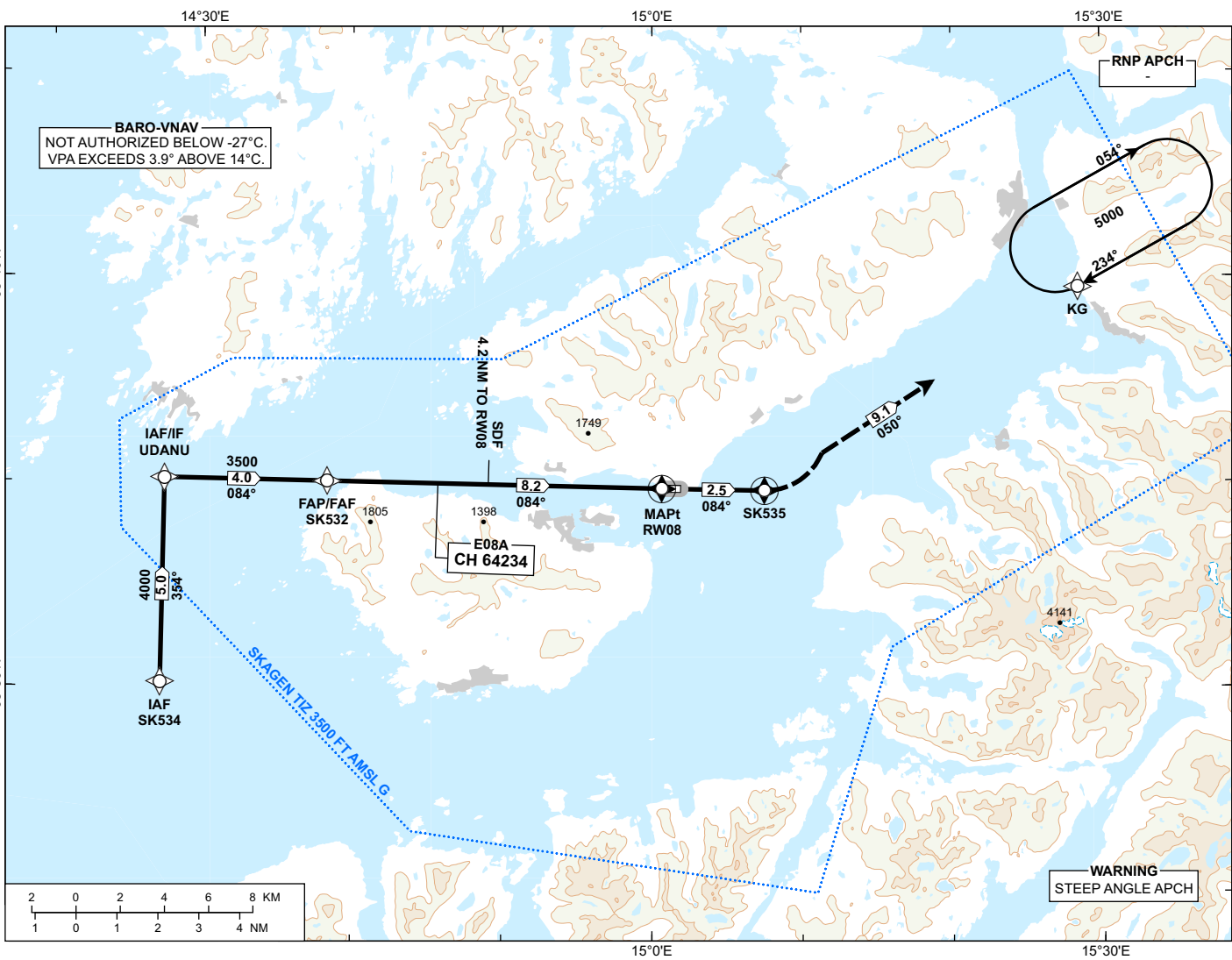


INSTRUMENT APPROACH CHART - ICAO

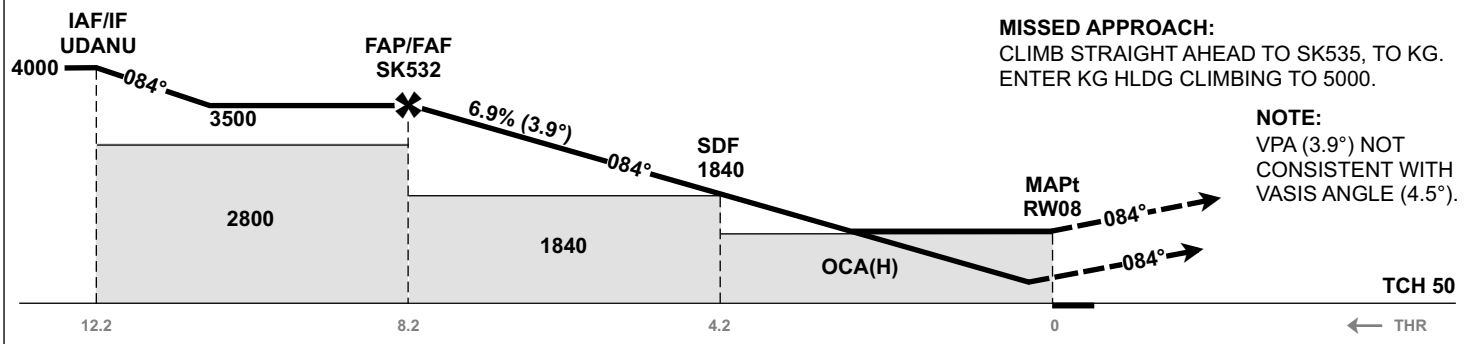
**STOKMARKNES
SKAGEN
RNP RWY 08**

 MSA 25 NM ARP	APP: 126.455	AD ELEV: 14
	AFIS: 120.455	THR ELEV: 10
	VDF: 120.455	HGT RELATED TO THR 08
		CIRCLING HGT RELATED TO AD ELEV
		DIST IN NM. ELEV, ALT AND HGT IN FT
	SCALE 1:300 000	VAR 7° E (2020)

**TRANSITION ALTITUDE
7000**



DIST TO RW08	9	8	7	6	5	4	3	2
ALT (HGT)	-	3440 (3430)	3010 (3000)	2590 (2580)	2170 (2160)	1750 (1740)	1330 (1320)	-



CAT OF ACFT		A	B	C	D
OCA (H) STRAIGHT- IN	LPV 2.5%*	1514 (1504)	1531 (1521)	-	-
	LPV 4.4%*	261 (251)	278 (268)	-	-
	LNAV/VNAV 2.5%*	1510 (1500)	1530 (1520)	-	-
	LNAV/VNAV 2.9%*		1250 (1240)	-	-
	LNAV 2.5%*		1930 (1920)	-	-
CIRCLING		1250 (1240)			
		1930 (1916)			

NOTE: CIRCLING S OF AD ONLY. *MNM MISSED APCH CLIMB GRADIENT.

CHANGES: FREQUENCIES.

ATS AIRSPACE CLASSIFICATION: REF ENR 1.4