

INSTRUMENT APPROACH CHART - ICAO PLAN VIEW SCALE: 1:375 000

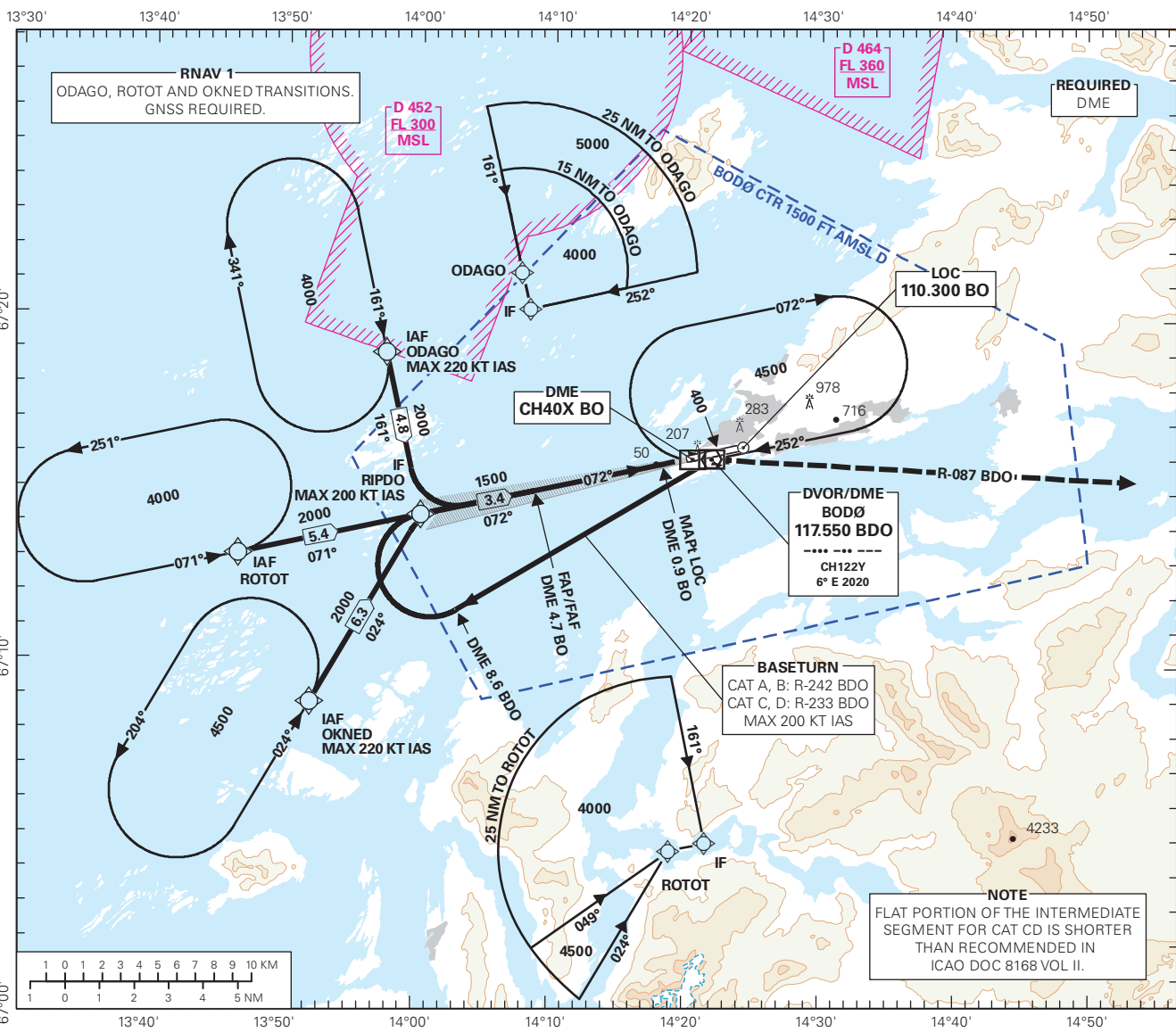
BODØ

BODØ

ILS Z or LOC Z RWY 07

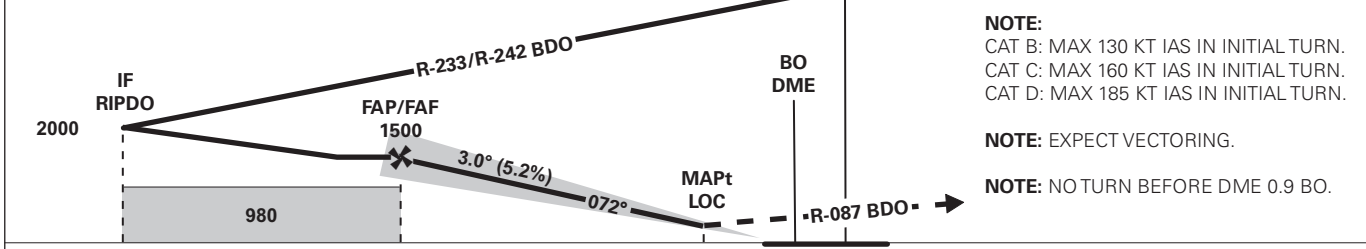
TRANSITION ALTITUDE
7000

	ATIS: 123.905	AD ELEV: 44	
	APP: 119.705 124.005	THR ELEV: 19	DIST IN NM
		HGT RELATED TO THR RWY 07	ELEV, ALT AND HGT IN FT
	TWR: 118.105	CIRCLING HGT RELATED TO AD ELEV	
	BEARINGS ARE MAGNETIC - VAR: 6° E (2020)		



DIST TO BO	9	8	7	6	5	4	3	2
ALT (HGT)	-	-	-	-	-	1300 (1281)	980 (961)	660 (641)

MISSED APCH:
CLIMB STRAIGHT AHEAD. WHEN PASSING 400, TURN RIGHT TO INTERCEPT AND PROCEED ON R-087 BDO. AT DME 15 BDO OR WHEN PASSING 3100, WHICHEVER COMES LAST, TURN RIGHT DCT BDO. ENTER BDO HLDG CLIMBING TO 4500.



		8.0	4.7	0.9	0	0
		8.6		0.7	0	0
		7.9	4.5			
CAT OF ACFT		A	B	C	D	
OCA(H) STRAIGHT - IN	CAT I 2.5%*	287 (268)	297 (278)	315 (296)	344 (325)	
	CAT I 3.0%*	275 (256)	287 (268)	295 (276)	306 (287)	
LOC		350 (331)				
CIRCLING		570 (526)	1060 (1016)	1300 (1256)		

NOTE: CIRCLING S OF AD ONLY. *MNM MISSED APCH CLIMB GRADIENT.

CHANGES: FREQUENCIES.