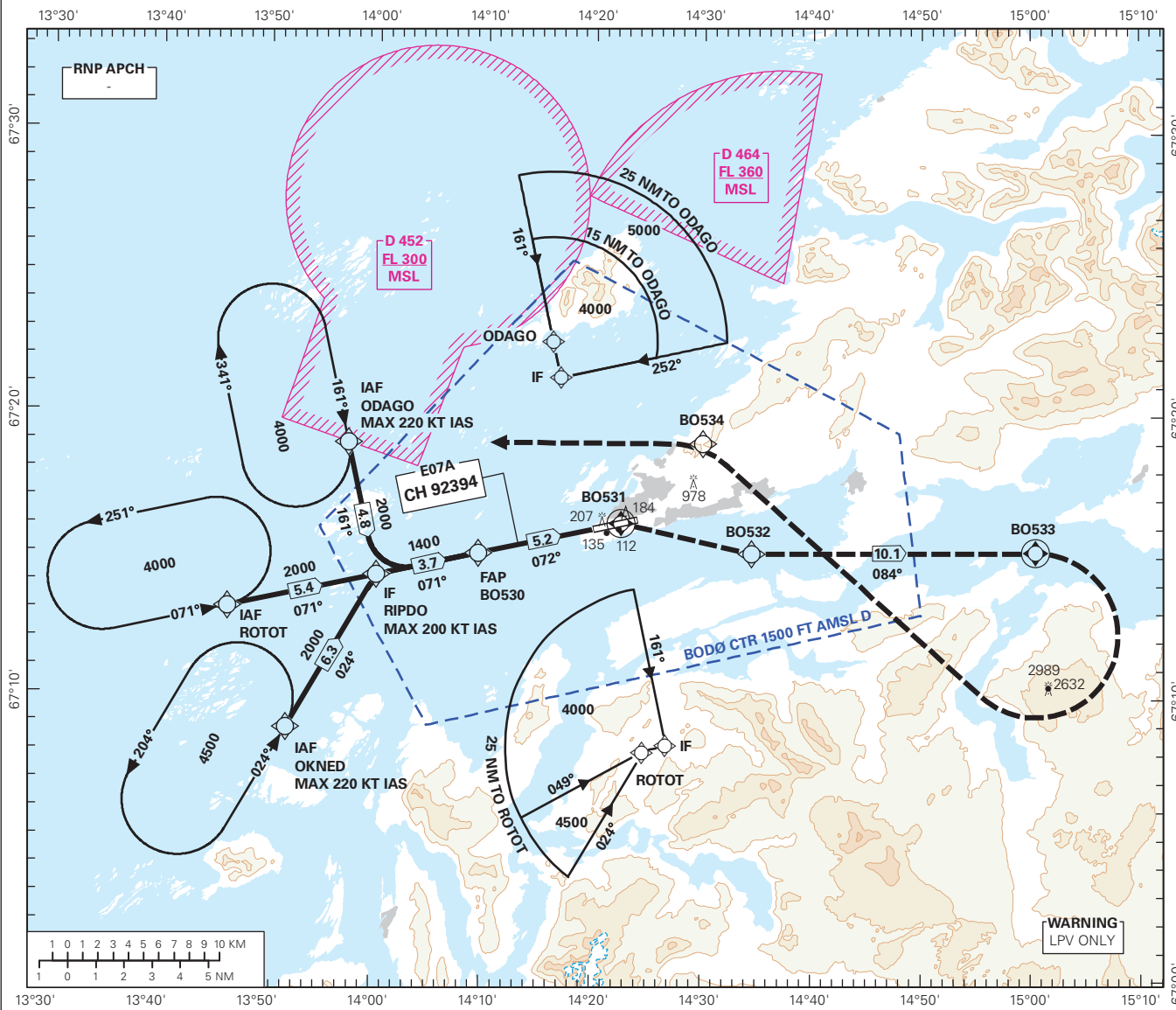


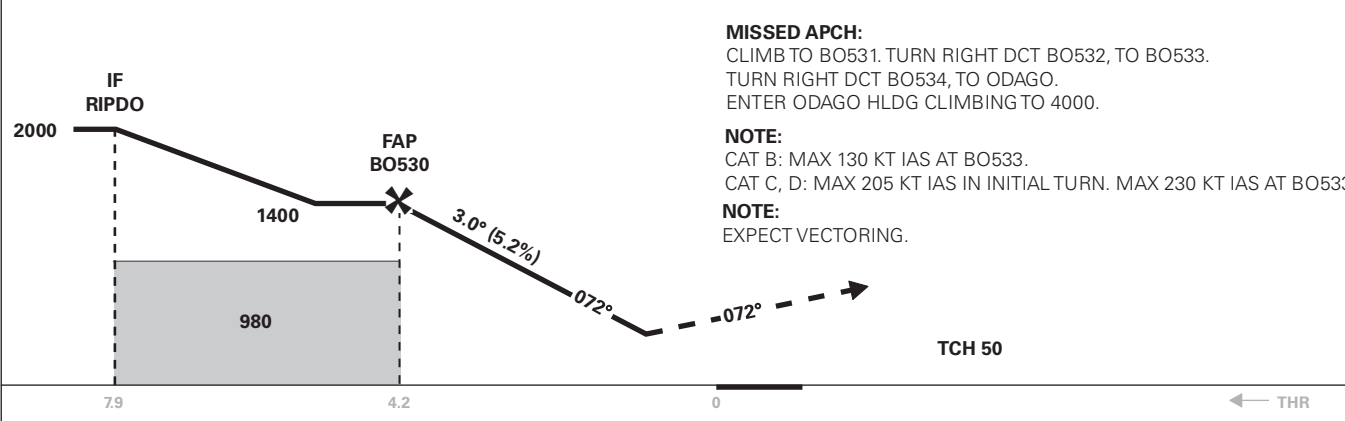
**INSTRUMENT APPROACH CHART - ICAO PLAN VIEW SCALE: 1:450 000**

ATIS: 123.905	AD ELEV: 44			BODØ <b>BODØ</b> RNP X RWY 07 (LPV only) TRANSITION ALTITUDE 7000
APP: 119.705 124.005	THR ELEV: 19	DIST IN NM		
	HGT RELATED TO THR RWY 07	ELEV, ALT AND HGT IN FT		
TWR: 118.105	CIRCLING HGT RELATED TO AD ELEV			
BEARINGS ARE MAGNETIC - VAR: 6° E (2020)				

ATS AIRSPACE CLASSIFICATION: REF ENR 1.4.



DISTO RW07	9	8	7	6	5	4	3	2
ALT (HGT)	-	-	-	-	-	1350 (1331)	1030 (1011)	710 (691)



**MISSED APCH:**  
 CLIMB TO BO531. TURN RIGHT DCT BO532, TO BO533.  
 TURN RIGHT DCT BO534, TO ODAGO.  
 ENTER ODAGO HLDG CLIMBING TO 4000.

**NOTE:**  
 CAT B: MAX 130 KT IAS AT BO533.  
 CAT C, D: MAX 205 KT IAS IN INITIAL TURN. MAX 230 KT IAS AT BO533.

**NOTE:**  
 EXPECT VECTORING.

CAT OF ACFT		A	B	C	D
OCA(H) STRAIGHT - IN	LPV 2.5%*	359 (340)	493 (474)	556 (537)	567 (548)
	LPV 3.0%*	347 (328)	359 (340)	367 (348)	378 (359)
CIRCLING		570 (526)	1060 (1016)	1300 (1256)	

NOTE: CIRCLING S OF AD ONLY. \*MNM MISSED APCH CLIMB GRADIENT.

CHANGES: FREQUENCIES, BO533 SYMBOLOLOGY.