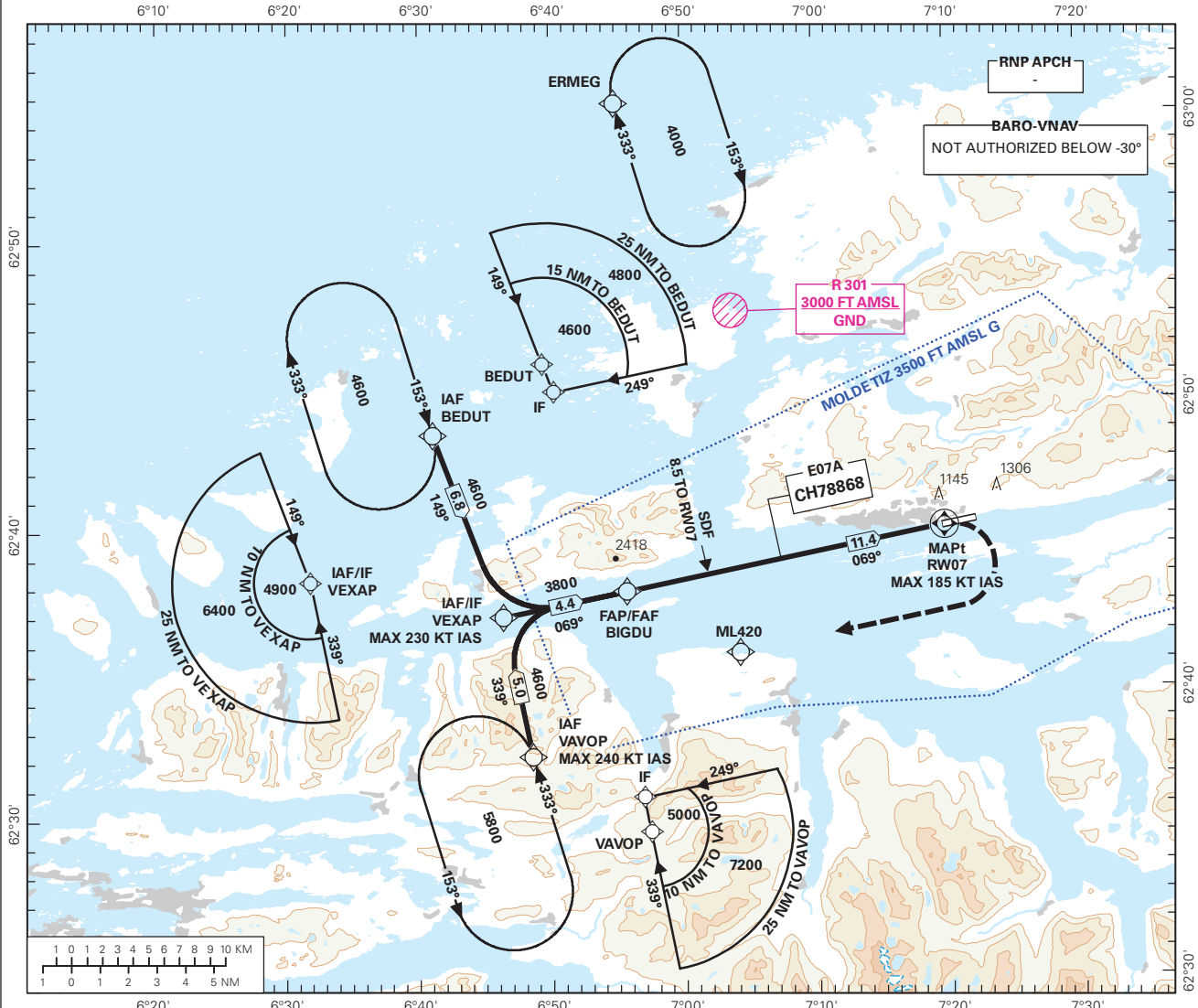


AIRSPACE CLASSIFICATION: REF ENR 1.4

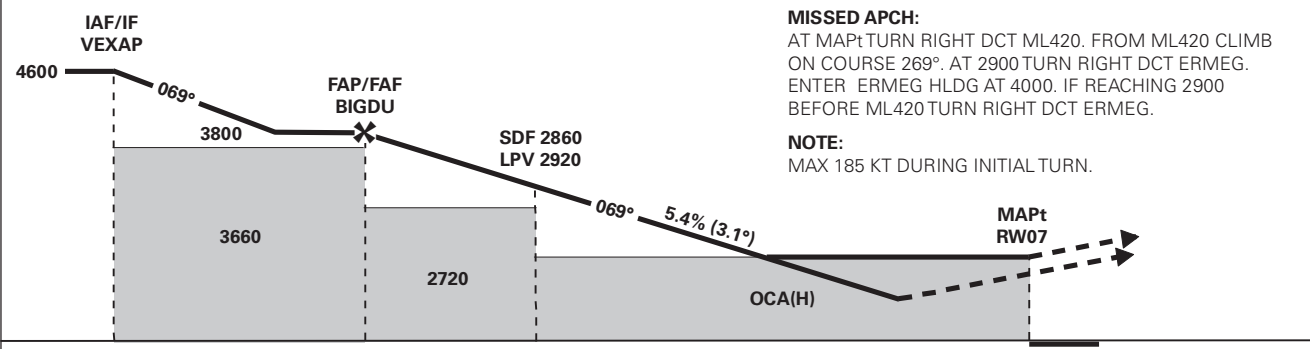
INSTRUMENT APPROACH CHART - ICAO PLAN VIEW SCALE: 1:450 000

**MOLDE
ÅRØ
RNP Z RWY 07**

ATIS: 130.080	AD ELEV: 10	
APP: 119.355	THR ELEV: 10	DIST IN NM
AFIS: 119.955	HGT RELATED TO THR RWY 07	ELEV, ALT AND HGT IN FT
CIRCLING HGT RELATED TO AD ELEV		TRANSITION ALTITUDE
BEARINGS ARE MAGNETIC - VAR 2 ° E (2020)		7000



DIST TO RW07	11	10	9	8	7	6	5	4
ALT (HGT)	3680 (3670)	3350 (3340)	3020 (3010)	2690 (2680)	2370 (2360)	2040 (2030)	1710 (1700)	1380 (1370)



MISSED APCH:
AT MAPt TURN RIGHT DCT ML420. FROM ML420 CLIMB ON COURSE 269°. AT 2900 TURN RIGHT DCT ERMEG. ENTER ERMEG HLDG AT 4000. IF REACHING 2900 BEFORE ML420 TURN RIGHT DCT ERMEG.

NOTE:
MAX 185 KT DURING INITIAL TURN.

CAT OF ACFT	OCA(H)			
	A	B	C	D
LPV 2.5%	660 (650)	670 (660)	720 (710)	730 (720)
LPV 4.0%	480 (470)	490 (480)	570 (560)	580 (570)
LPV 5.0%	410 (400)	420 (410)	450 (440)	460 (450)
LNAV/VNAV 2.5%	980 (970)	990 (980)	1010 (1000)	1040 (1030)
LNAV/VNAV 4.0%	870 (860)	880 (870)	910 (900)	940 (930)
LNAV/VNAV 5.0%	820 (810)	830 (820)	850 (840)	890 (880)
LNAV 2.5%		1300 (1290)		1310 (1300)
LNAV 3.0%				1300 (1290)
CIRCLING	1300 (1290)		1660 (1650)	
			1710 (1700)	

NOTE: CIRCLING S OF AD ONLY. *MNM MISSED APCH CLIMB GRADIENT.

CHANGES: PROCEDURE NAME, FREQUENCIES, EDITORIALS, R-301