

ATS AIRSPACE CLASSIFICATION: REF ENR 1.4.

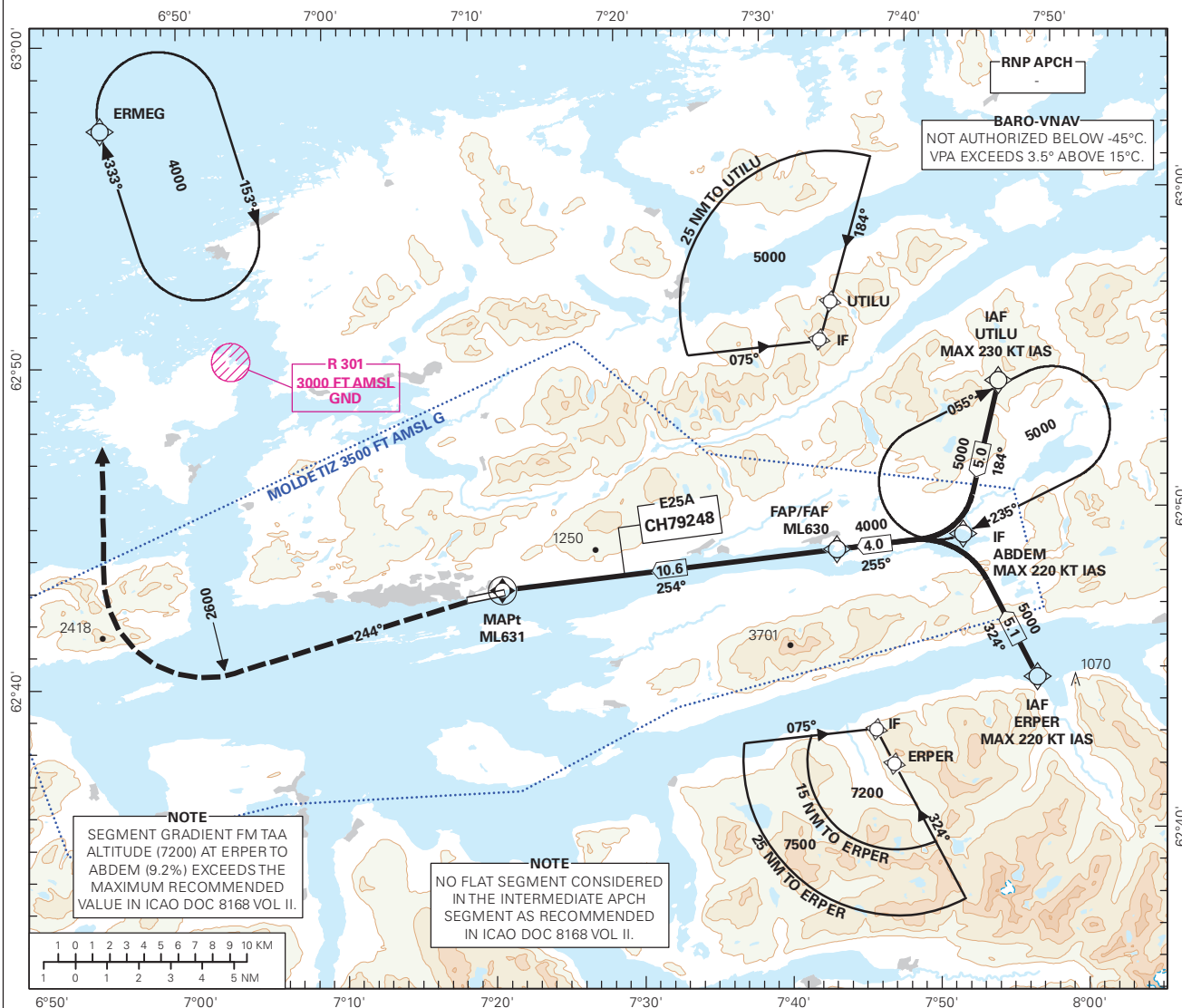
INSTRUMENT APPROACH CHART - ICAO PLAN VIEW SCALE: 1:400 000

ATIS: 130.080	AD ELEV: 10		
APP: 119.355	THR ELEV: 10	DIST IN NM	
AFIS: 119.955	HGT RELATED TO THR RWY 25	ELEV, ALT AND HGT IN FT	
CIRCLING HGT RELATED TO AD ELEV		TRANSITION ALTITUDE 7000	
BEARINGS ARE MAGNETIC - VAR 2 ° E (2020)			

MOLDE

ÅRØ

RNP Z RWY 25

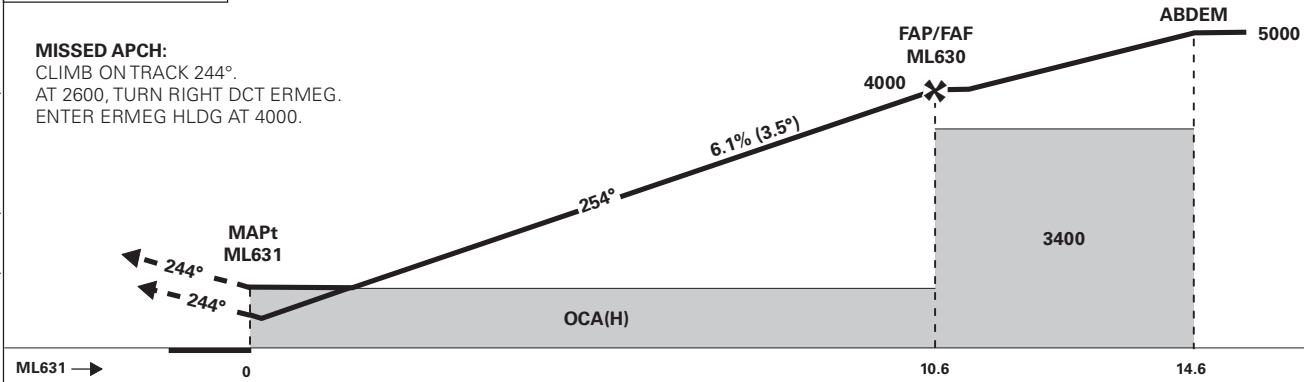


NOTE
SEGMENT GRADIENT FM TAA ALTITUDE (7200) AT ERPER TO ABDEM (9.2%) EXCEEDS THE MAXIMUM RECOMMENDED VALUE IN ICAO DOC 8168 VOL II.

NOTE
NO FLAT SEGMENT CONSIDERED IN THE INTERMEDIATE APCH SEGMENT AS RECOMMENDED IN ICAO DOC 8168 VOL II.

DIST TO ML631	11	10	9	8	7	6	5	4
ALT (HGT)	-	3780 (3770)	3410 (3400)	3040 (3030)	2670 (2660)	2290 (2280)	1920 (1910)	1550 (1540)

PROCEDURE OFFSET 5°



CAT OF ACFT	OCA(H)				
	A	B	C	D	
STRAIGHT - IN	LPV 2.5%*	960 (950)	970 (960)	980 (970)	990 (980)
	LPV 4.0%*	810 (800)	820 (810)	830 (820)	840 (830)
	LPV 5.0%*	670 (660)	690 (680)	700 (690)	710 (700)
CIRCLING	LNAV/VNAV	1350 (1340)			
	LNAV	1360 (1350)			
CIRCLING		1360 (1350)	1660 (1650)	1710 (1700)	

NOTE: CIRCLING S OF AD ONLY. *MNM MISSED APCH GRADIENT.

CHANGES: PROCEDURE NAME, R-301, EDITORIALS, FREQUENCIES.