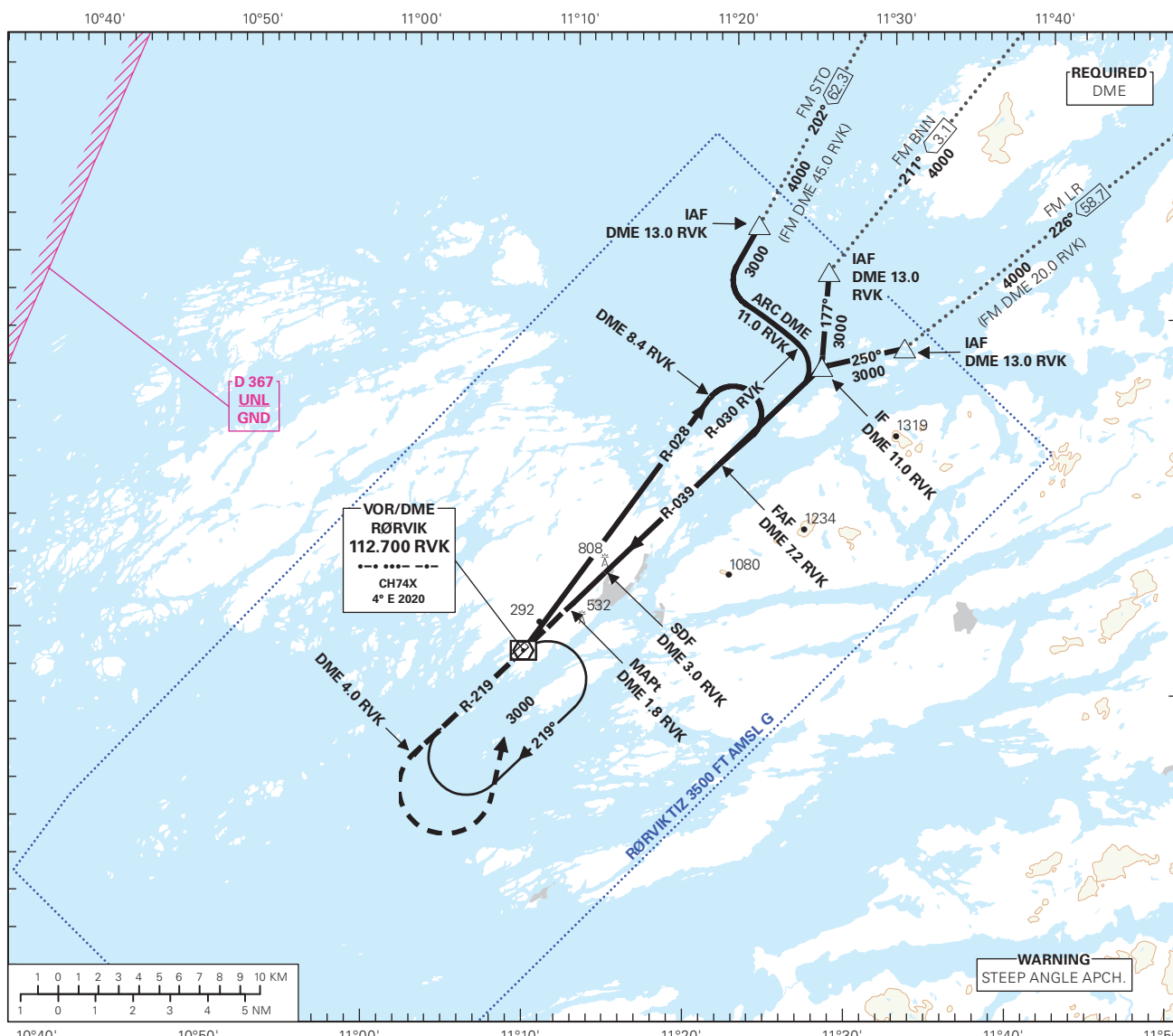


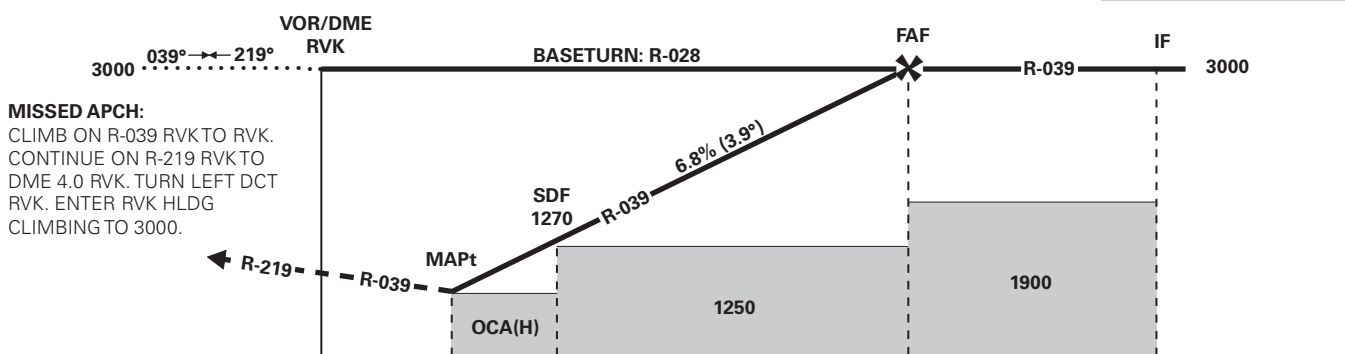
INSTRUMENT APPROACH CHART - ICAO PLAN VIEW SCALE: 1:350 000

| | | | | | |
|--|---|--------------|---------------------------------|--|-------------------------|
| | ATIS: 132.030 | AD ELEV: 15 | DIST IN NM | RØRVIK RYUM VOR RWY 22 TRANSITION ALTITUDE 7000 | |
| | AFIS: 119.805 | THR ELEV: 15 | | | ELEV, ALT AND HGT IN FT |
| | HGT RELATED TO THR RWY 22 | | CIRCLING HGT RELATED TO AD ELEV | | |
| | BEARINGS ARE MAGNETIC - VAR 4° E (2020) | | | | |



| DIST TO RVK | 9 | 8 | 7 | 6 | 5 | 4 | 3 | 2 |
|-------------|---|---|-------------|-------------|-------------|-------------|-------------|-----------|
| ALT (HGT) | - | - | 2920 (2905) | 2510 (2495) | 2090 (2075) | 1680 (1665) | 1270 (1255) | 850 (835) |

PROCEDURE OFFSET 2°



MISSED APCH:
 CLIMB ON R-039 RVK TO RVK.
 CONTINUE ON R-219 RVK TO
 DME 4.0 RVK. TURN LEFT DCT
 RVK. ENTER RVK HLDG
 CLIMBING TO 3000.

| | | | | | |
|----------------------|---|-----------|-----------|-----|------|
| DME (RVK) | 0 | 1.8 | 3.0 | 7.2 | 11.0 |
| THR | 0 | 1.6 | 2.9 | 7.1 | 10.9 |
| CAT OF ACFT | | A | B | C | D |
| OCA(H) STRAIGHT - IN | | 780 (765) | | - | - |
| CIRCLING | | 780 (765) | 880 (865) | - | - |

NOTE: CIRCLING NW OF AD ONLY.

CHANGES: FREQUENCIES, EDITORIALS.