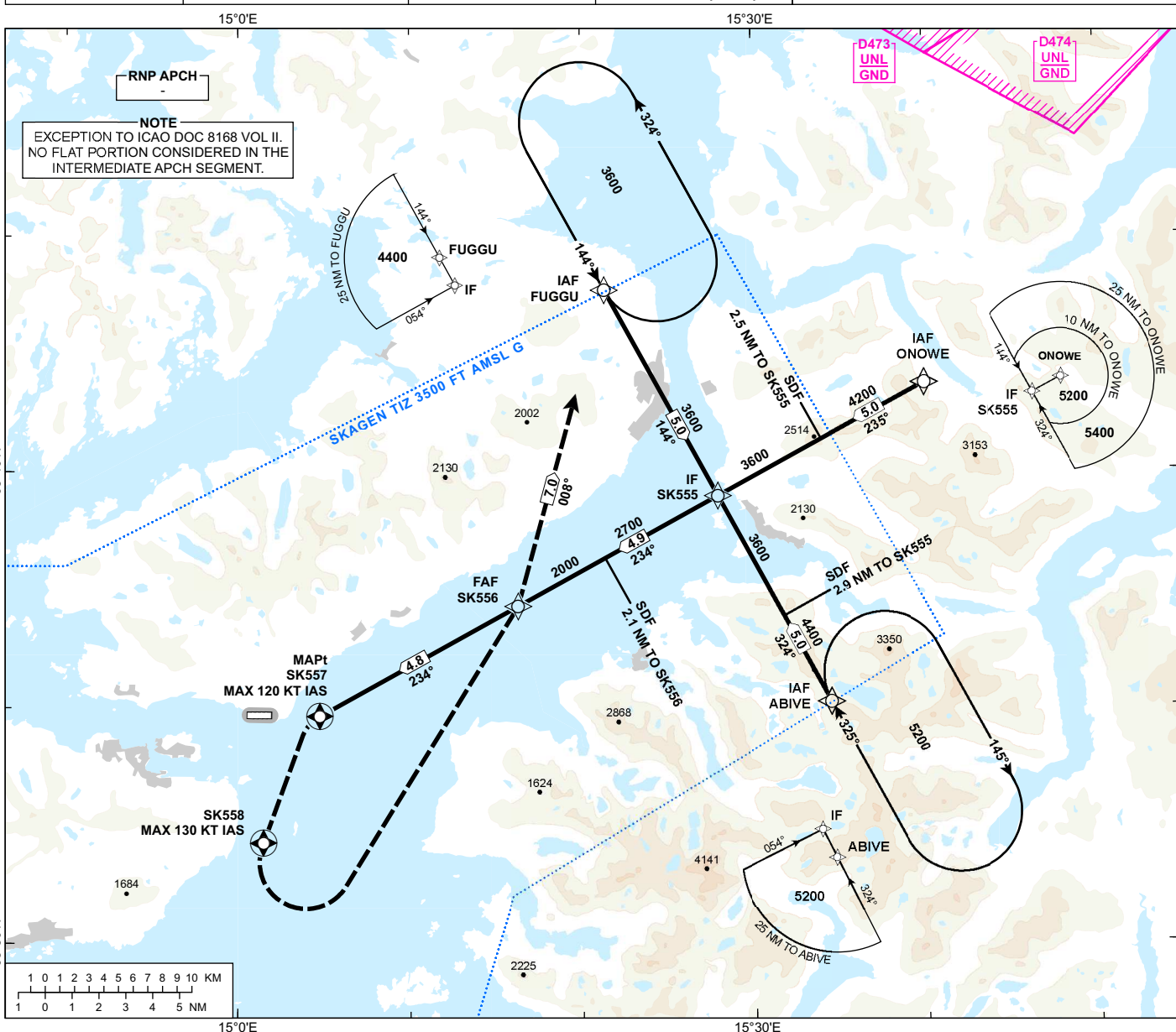


**INSTRUMENT APPROACH CHART - ICAO**

**STOKMARKNES  
SKAGEN  
RNP Z RWY 26**

APP: 126.455	AD ELEV: 14
AFIS: 120.455	THR ELEV: 13
VDF AVBL.	HGT RELATED TO THR 26
	CIRCLING HGT RELATED TO AD ELEV
	DIST IN NM. ELEV, ALT AND HGT IN FT
SCALE 1:250 000	VAR 7° E (2020)

TRANSITION ALTITUDE  
7000



DIST TO SK557	9	8	7	6	5	4	3	2
ALT (HGT)	-	-	-	-	-	1730 (1717)	1400 (1387)	1070 (1057)

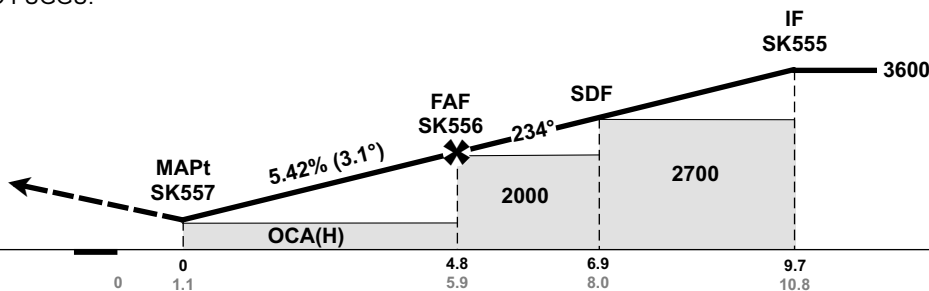
**MISSED APPROACH:**  
TURN LEFT DCT SK558, LEFT DCT SK556, TO FUGGU.  
ENTER FUGGU HLDG CLIMBING TO 3600.

PROCEDURE OFFSET: 30°

**NOTE:**  
MAX 120 KT IAS IN MISSED APCH TURN AT SK557.  
MAX 130 KT IAS IN MISSED APCH TURN AT SK558.

DESCENT GRADIENT CALCULATED  
FMSK556 TO SK557 FOR OCA 410.

NO TURN BEFORE MAPt.



CHANGES: FREQUENCIES.

CAT OF ACFT		A	B
OCA (H) STRAIGHT- IN	LNAV 2.5%*	820 (807)	750 (737)
	LNAV 3.5%*	410 (397)	440 (427)
CIRCLING		820 (807)	1120 (1106)

**NOTE:** CIRCLING S OF AD ONLY. \*MNM MISSED APCH CLIMB GRADIENT.

ATS AIRSPACE CLASSIFICATION: REF ENR 1.4