

STANDARD ARRIVAL CHART - INSTRUMENT (STAR) - ICAO

TROMSØ/ Langnes (ENTC) RNAV RWY 36 NORWAY

ATIS: 126.130
APP: 123.755
TWR: 118.305

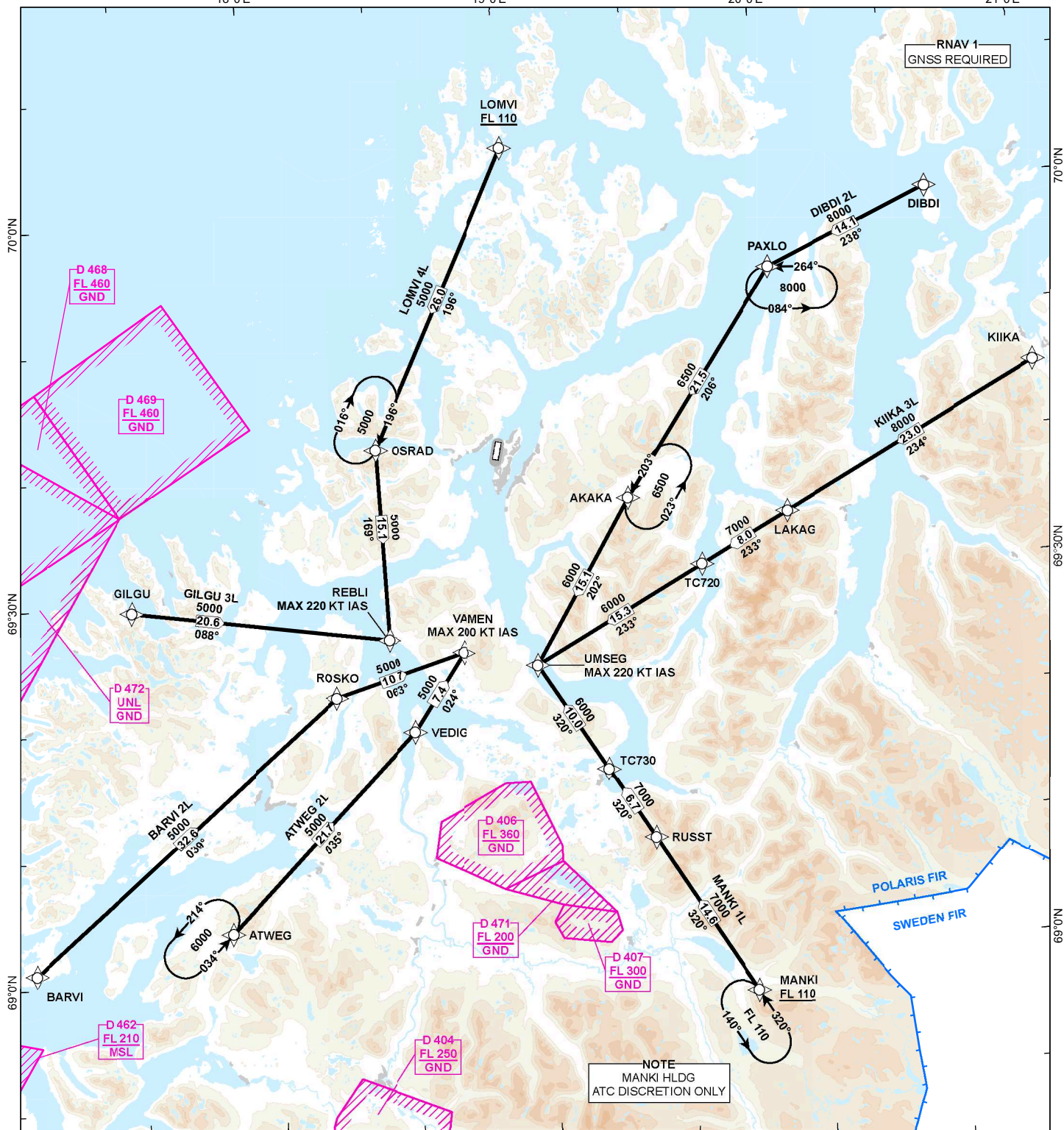
ALT AND ELEV ARE IN FT
DIST IN NM

1:820 000	VAR 10° E (2020)	TA 7000
-----------	------------------	---------

ATWEG 2L, BARVI 2L, DIBDI 2L, GILGU 3L, KIIKA 3L, LOMVI 4L, MANKI 1L

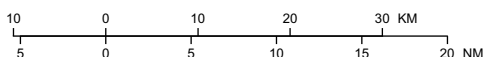
MSA 25 NM ARP

18°0'E 19°0'E 20°0'E 21°0'E



ROUTE AND WAYPOINT DESCRIPTIONS
ON THE SUCCEEDING PAGES

ATS AIRSPACE CLASSIFICATIONS: REF ENR 1.4
LEGEND: REF GEN 2.3



CHANGES: ATWEG 2L AND BARVI 2L PROCEDURE NAMES, SPEED RESTRICTION AT VAMEN, MSA, NOTES AND EDITORIALS.