

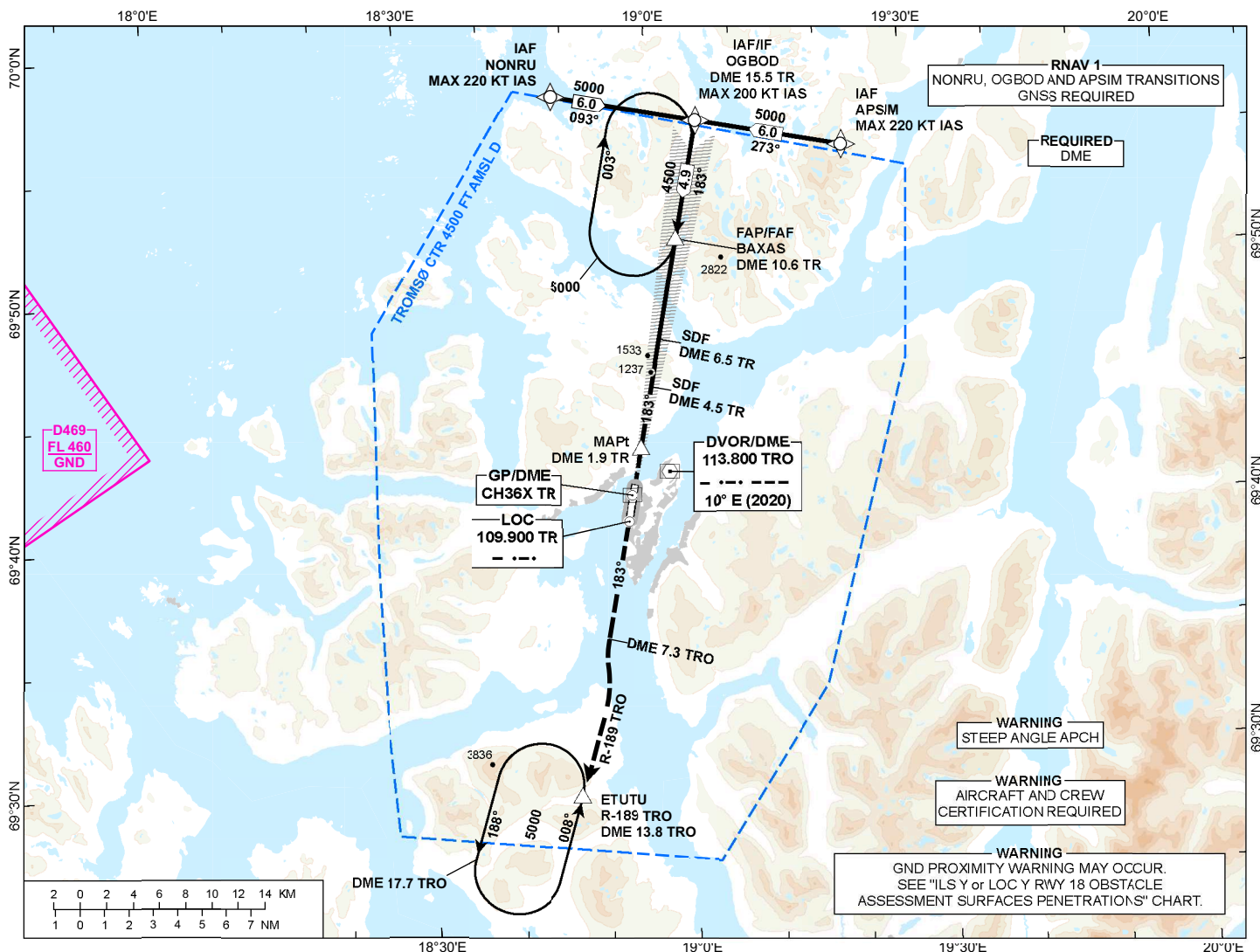
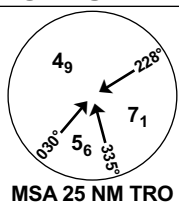
INSTRUMENT APPROACH CHART - ICAO

**TROMSØ
LANGNES**

ILS Y or LOC Y RWY 18

**TRANSITION ALTITUDE
7000**

ATIS: 126.130	AD ELEV: 32
APP: 123.755	THR ELEV: 14
TWR: 118.305	HGT RELATED TO THR 18
	CIRCLING HGT RELATED TO AD ELEV
	DIST IN NM. ELEV, ALT AND HGT IN FT
SCALE 1:500 000	VAR 10°E (2020)

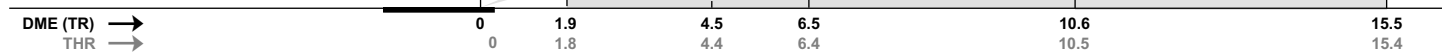


DIST TO TR	9	8	7	6	5	4	3	2
ALT (HGT)	3900 (3886)	3460 (3446)	3020 (3006)	2590 (2576)	2150 (2136)	1720 (1706)	1290 (1276)	860 (846)

MISSED APPROACH:
CONTINUOUS CLIMB TO 5000. CLIMB STRAIGHT AHEAD.
AT DME 7.3 TRO, TURN LEFT TO INTERCEPT
AND FOLLOW R-189 TRO TO ETUTU.
ENTER ETUTU HLDG CLIMBING TO 5000.

WARNING:
WHEN DESCENDING ON GP
PILOTS MUST NOT DESCEND
BELOW 1830 BEFORE DME 4.5 TR.

ILS RDH 49



CAT OF ACFT		A	B	C	D
OCA (H) STRAIGHT- IN	CAT I 2.5%*	1735 (1721)	1752 (1738)	1767 (1753)	1782 (1768)
	CAT I 4.0%*	806 (792)	822 (808)	837 (823)	852 (838)
	CAT I 5.0%*	343 (329)	359 (345)	375 (361)	390 (376)
	CAT I 6.0%*	288 (274)	308 (294)	321 (307)	338 (324)
	LOC 2.5%*	2060 (2046)			
	LOC 4.0%*	860 (846)			
CIRCLING		2060 (2028)		2700 (2668)	3000 (2968)

NOTE: CIRCLING E OF AD ONLY. *MNM MISSED APCH CLIMB GRADIENT.

CHANGES: NEW PROCEDURE.

ATS AIRSPACE CLASSIFICATION: REF ENR 1.4