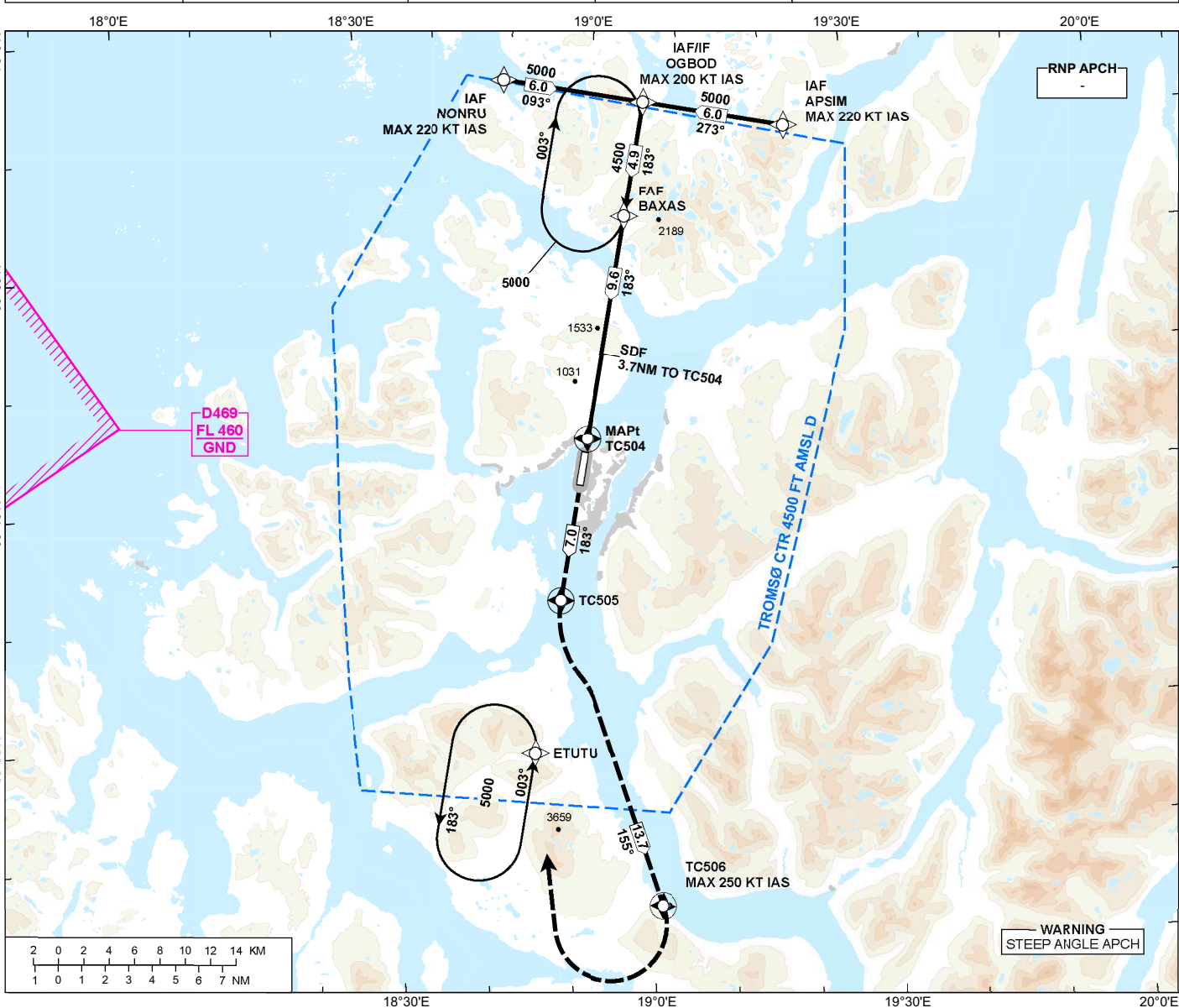


INSTRUMENT APPROACH CHART - ICAO

TROMSØ LANGNES RNP Z RWY 18

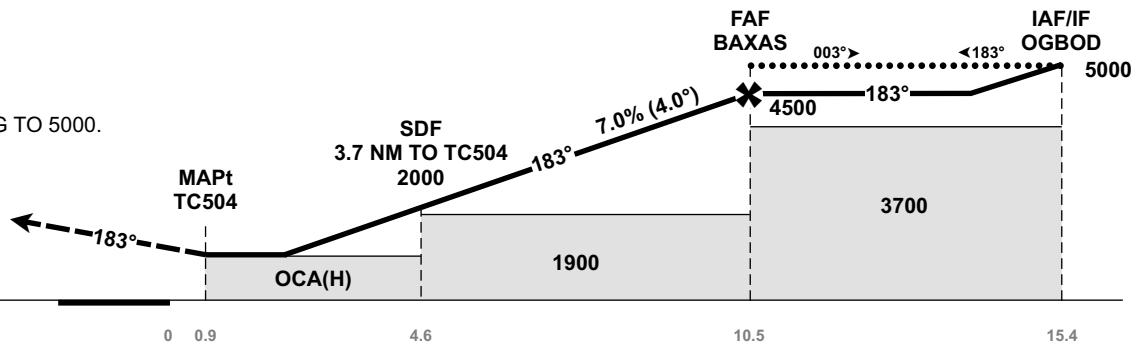
ATIS: 126.130	AD ELEV: 32
APP: 123.755	THR ELEV: 14
TWR: 118.305	HGT RELATED TO THR 18
	CIRCLING HGT RELATED TO AD ELEV
	DIST IN NM. ELEV, ALT AND HGT IN FT
SCALE 1:500 000	VAR 10°E (2020)

TRANSITION ALTITUDE
7000



DIST TO TC504	9	8	7	6	5	4	3	2
ALT (HGT)	4260 (4246)	3840 (3826)	3420 (3406)	2990 (2976)	2570 (2556)	2150 (2136)	1720 (1706)	1300 (1286)

MISSED APPROACH:
 CONTINUOUS CLIMB TO 5000.
 CLIMB TO TC505. TO TC506.
 TURN RIGHT DCT ETUTU.
 ENTER ETUTU HLDG CLIMBING TO 5000.



THR →		0	0.9	4.6	10.5	15.4
CAT OF ACFT		A	B	C	D	
OCA (H) STRAIGHT-IN	LNAV			1040 (1026)		
		-	-	-	-	-
CIRCLING			1040 (1008)	2700 (2668)	3000 (2968)	

NOTE: CIRCLING E OF AD ONLY.

ATS AIRSPACE CLASSIFICATION: REF ENR 1.4

CHANGES: COMPLETE REVISION.