

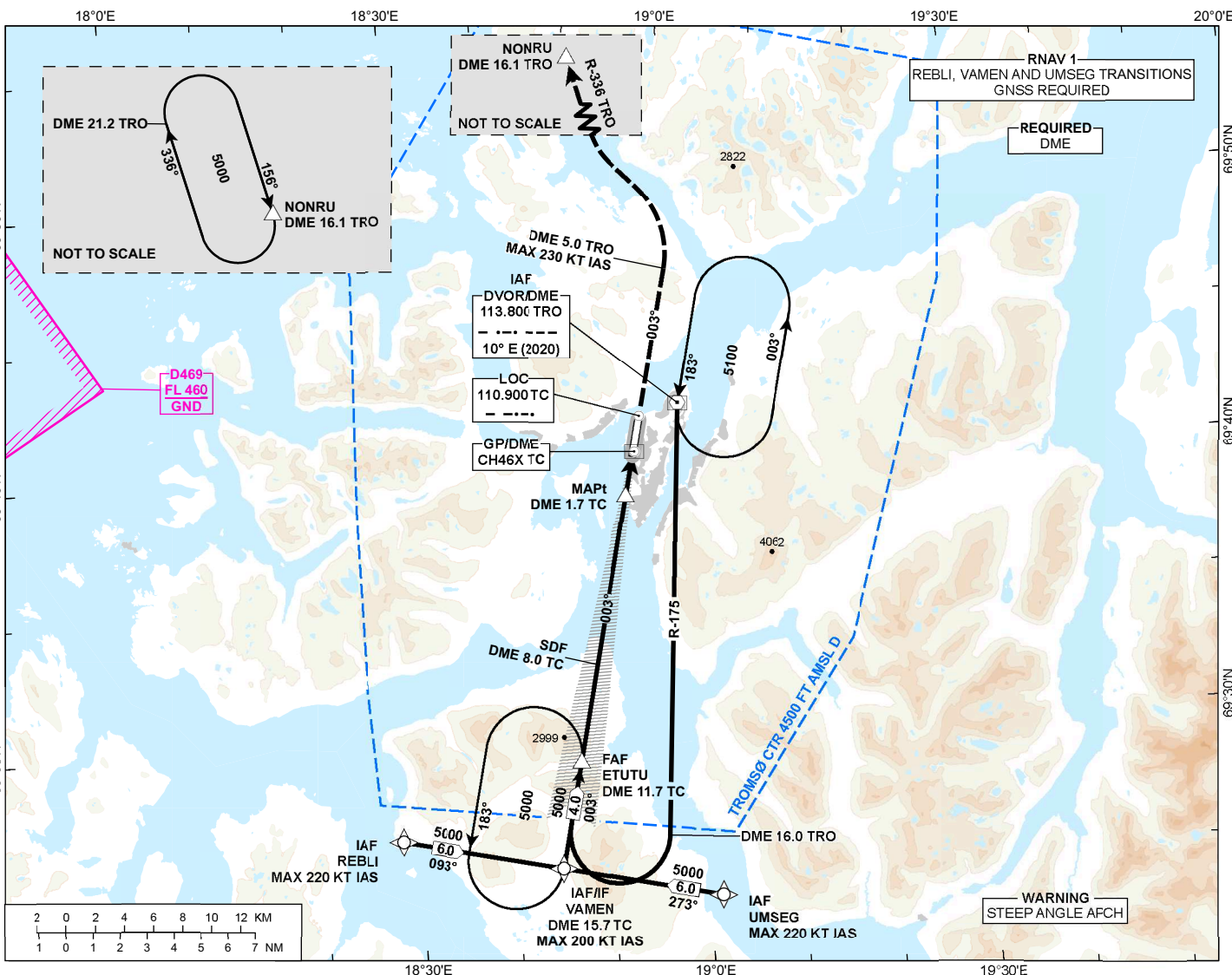
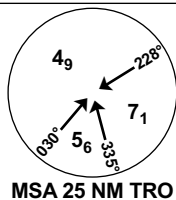
**INSTRUMENT APPROACH CHART - ICAO**

**TROMSØ  
LANGNES**

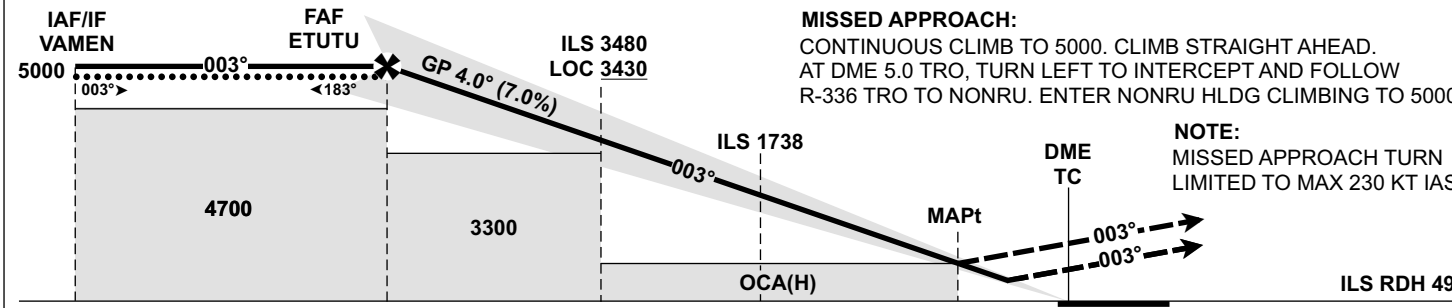
**ILS Y or LOC Y RWY 36**

**TRANSITION ALTITUDE  
7000**

ATIS: 126.130	AD ELEV: 32
APP: 123.755	THR ELEV: 27
TWR: 118.305	HGT RELATED TO THR 36
	CIRCLING HGT RELATED TO AD ELEV
	DIST IN NM. ELEV, ALT AND HGT IN FT
SCALE 1:450 000	VAR 10°E (2020)



DIST TO TC	9	8	7	6	5	4	3	2
ALT (HGT)	3919 (3892)	3479 (3452)	3041 (3014)	2605 (2578)	2171 (2144)	1738 (1711)	1307 (1280)	878 (851)



**MISSED APPROACH:**  
CONTINUOUS CLIMB TO 5000. CLIMB STRAIGHT AHEAD. AT DME 5.0 TRO, TURN LEFT TO INTERCEPT AND FOLLOW R-336 TRO TO NONRU. ENTER NONRU HLDG CLIMBING TO 5000.

**NOTE:**  
MISSED APPROACH TURN LIMITED TO MAX 230 KT IAS.

CAT OF ACFT		A	B	C	D
OCA (H) STRAIGHT- IN	CAT I 2.5%*	776 (749)	792 (765)	807 (780)	822 (795)
	CAT I 4.0%*	330 (303)	349 (322)	362 (335)	378 (351)
	CAT I 5.0%*	238 (211)	257 (230)	270 (243)	286 (259)
	LOC 2.5%*	830 (803)			
	LOC 2.7%*	760 (733)			
CIRCLING		840 (808)	880 (848)	2700 (2668)	3000 (2968)

NOTE: CIRCLING E OF AD ONLY. \*MNM MISSED APCH CLIMB GRADIENT.

CHANGES: NEW PROCEDURE.

ATS AIRSPACE CLASSIFICATION: REF ENR 1.4