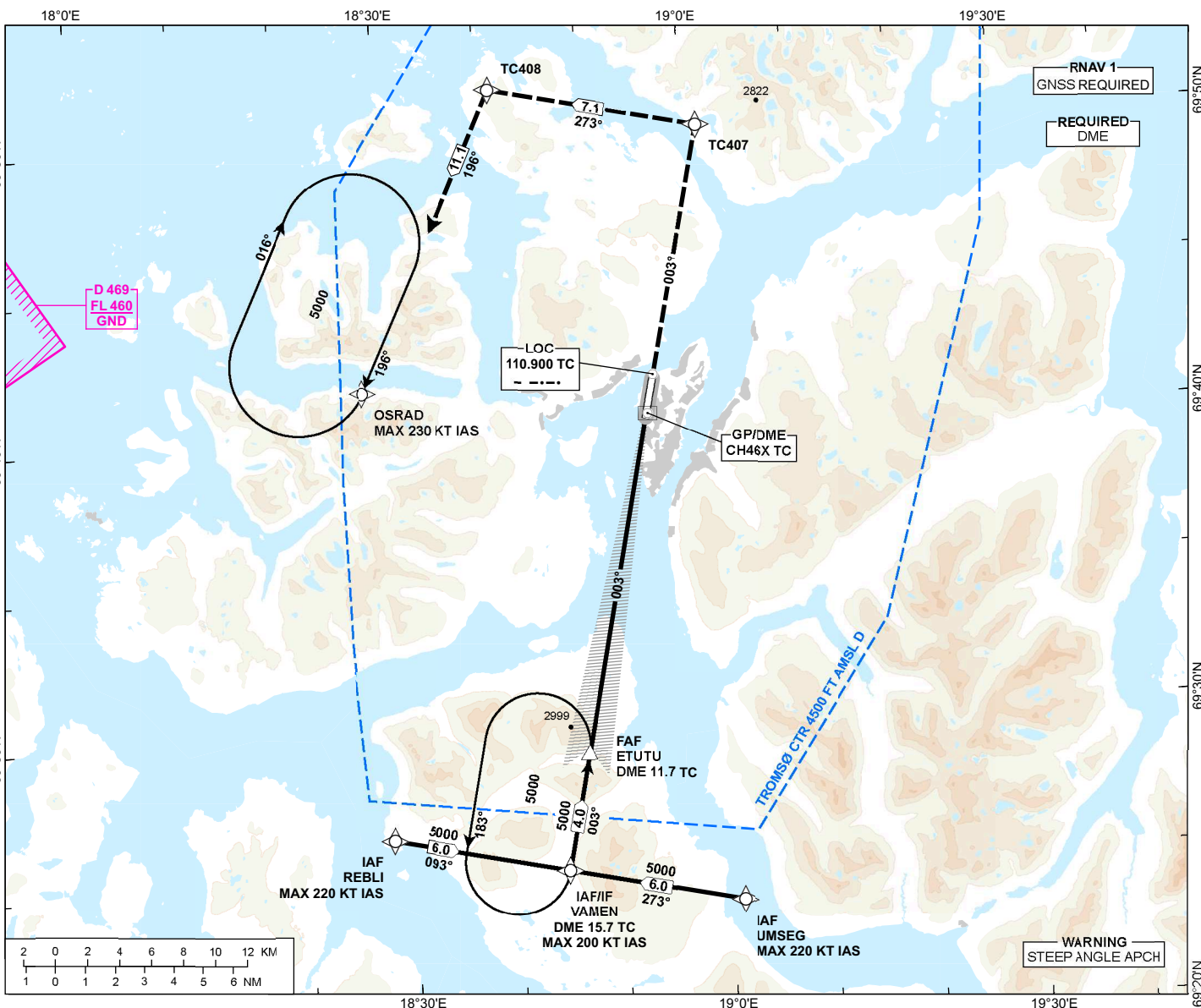
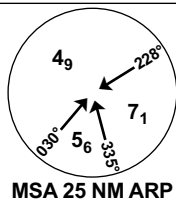


INSTRUMENT APPROACH CHART - ICAO

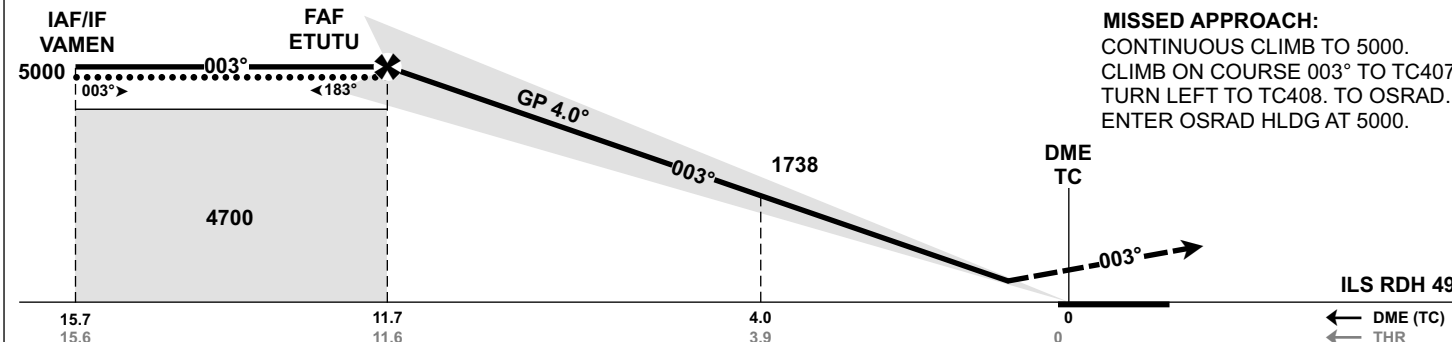
**TROMSØ
LANGNES
ILS Z RWY 36**

**TRANSITION ALTITUDE
7000**

ATIS: 126.130	AD ELEV: 32
APP: 123.755	THR ELEV: 27
TWR: 118.305	HGT RELATED TO THR 36
	CIRCLING HGT RELATED TO AD ELEV
	DIST IN NM. ELEV, ALT AND HGT IN FT
SCALE 1:400 000	VAR 10°E (2020)



DIST TO TC	9	8	7	6	5	4	3	2
ALT (HGT)	3919 (3892)	3479 (3452)	3041 (3014)	2605 (2578)	2171 (2144)	1738 (1711)	1307 (1280)	878 (851)



CAT OF ACFT		A	B	C	D
OCA (H) STRAIGHT- IN	CAT I: 2.5%*	1108 (1081)	1124 (1097)	1139 (1112)	1154 (1127)
	CAT I: 4.0%*	371 (344)	387 (360)	402 (375)	417 (390)
	CAT I: 5.0%*	238 (211)	257 (230)	270 (243)	288 (259)
CIRCLING		1110 (1078)	1130 (1098)	2700 (2668)	3000 (2968)

NOTE: CIRCLING E OF AD ONLY. *MNM MISSED APCH CLIMB GRADIENT.

CHANGES: COMPLETE REVISION.

ATS AIRSPACE CLASSIFICATION: REF ENR 1.4