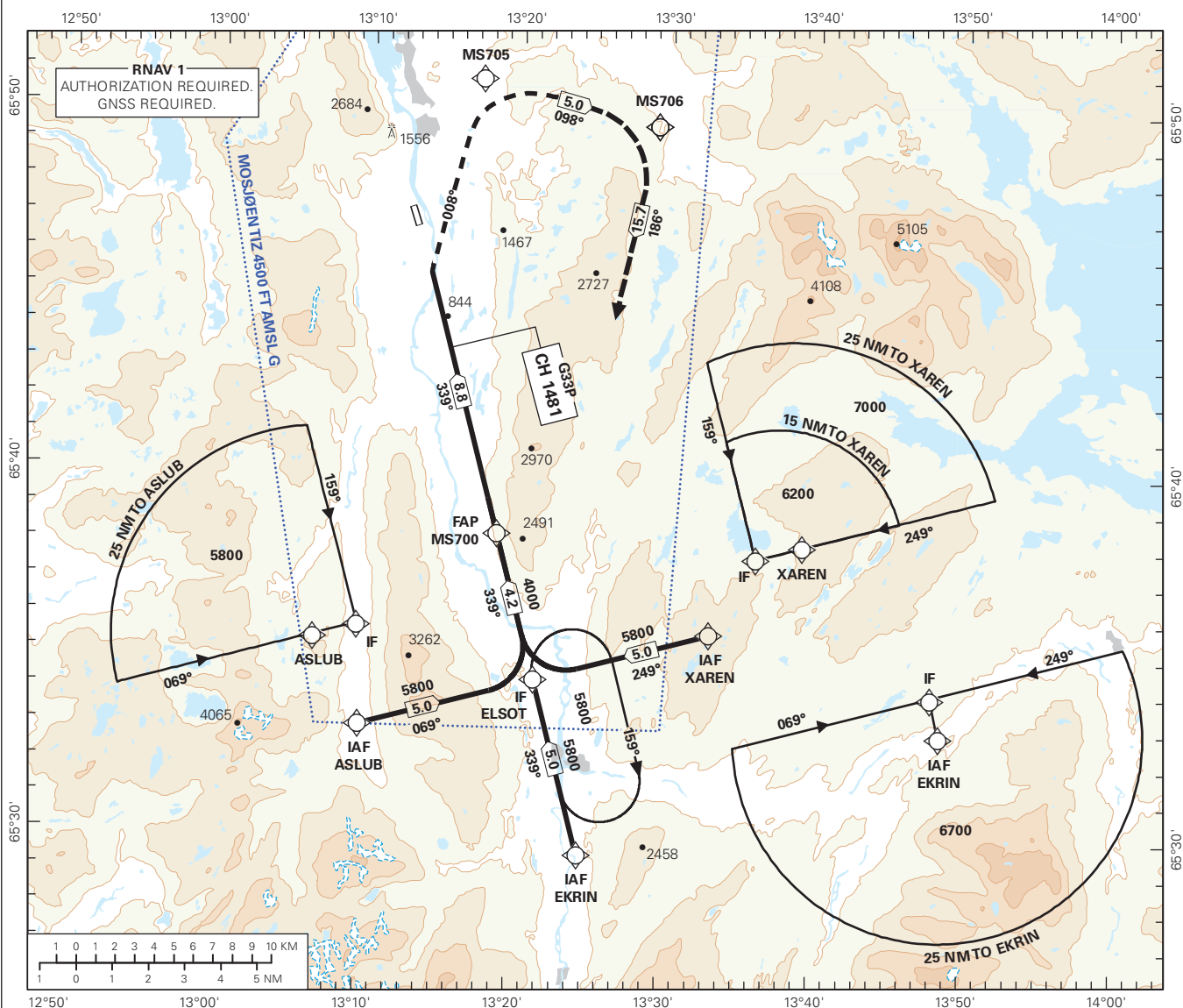


INSTRUMENT APPROACH CHART - ICAO PLAN VIEW SCALE: 1:350 000

APP: 127.905	AD ELEV: 241	DIST IN NM
AFIS: 123.405	THR ELEV: 241	
VDF: 123.405	HGT RELATED TO THR RWY 33	ELEV, ALT AND HGT IN FT
CIRCLING HGT RELATED TO AD ELEV		TRANSITION ALTITUDE 7000
BEARINGS ARE MAGNETIC - VAR: 6° E (2020)		

MOSJØEN
KJÆRSTAD
GLS RWY 33

ATS AIRSPACE CLASSIFICATION: REF ENR 1.4.



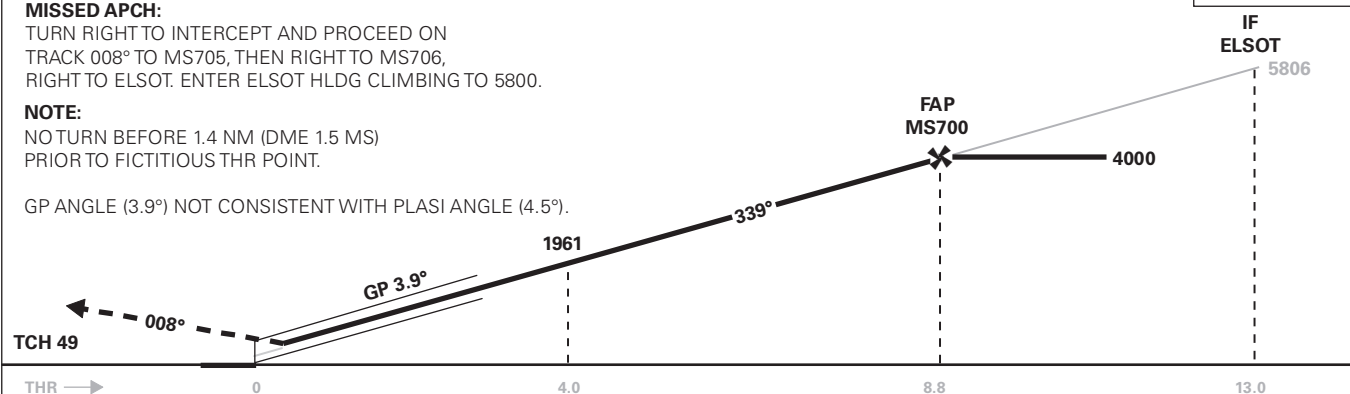
DIST TO THR	10	9	8	7	6	5	4	3
ALT (HGT)	-	-	3660 (3419)	3233 (2992)	2807 (2566)	2383 (2142)	1961 (1720)	1541 (1300)

PROC OFFSET 4°

MISSED APCH:
TURN RIGHT TO INTERCEPT AND PROCEED ON TRACK 008° TO MS705, THEN RIGHT TO MS706, RIGHT TO ELSOT. ENTER ELSOT HLDG CLIMBING TO 5800.

NOTE:
NO TURN BEFORE 1.4 NM (DME 1.5 MS) PRIOR TO FICTITIOUS THR POINT.

GP ANGLE (3.9°) NOT CONSISTENT WITH PLASI ANGLE (4.5°).



CHANGES: OCA(H).	THR →	0	4.0	8.8	13.0
	CAT OF ACFT	A	B	C	D
	OCA(H)	1820 (1579)	1854 (1613)	-	-
	SCAT-I	1311 (1070)	1329 (1088)	-	-
	5.0%*	1278 (1037)	1296 (1055)	-	-
CIRCLING		1820 (1579)	2790 (2549)	-	-

NOTE: CIRCLING E OF AD ONLY. *MNM MISSED APCH CLIMB GRADIENT.