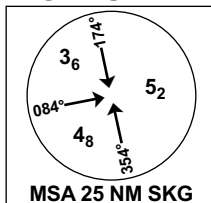


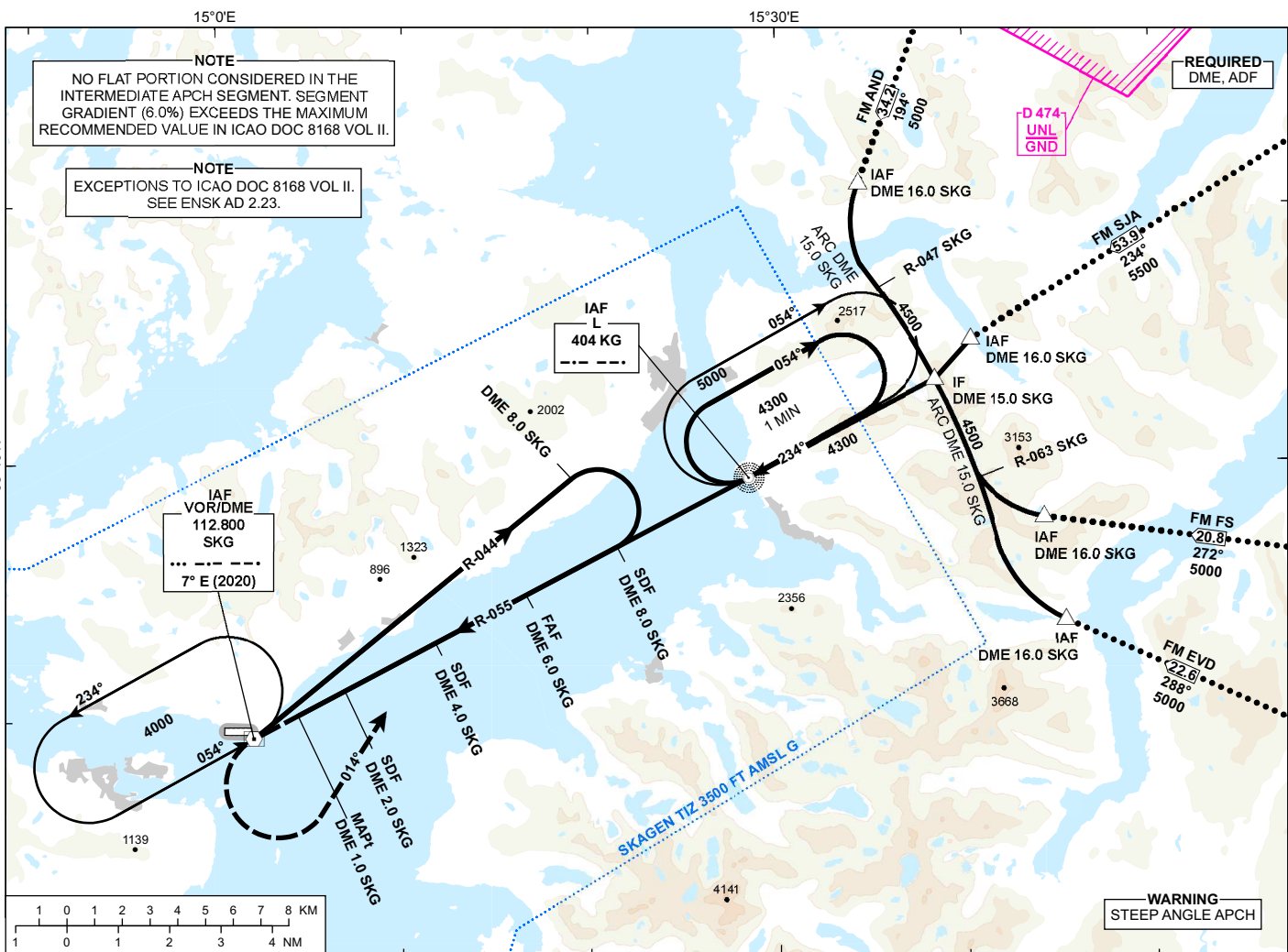
INSTRUMENT APPROACH CHART - ICAO

**STOKMARKNES
SKAGEN
VOR RWY 26**



APP: 126.455	AD ELEV: 14
AFIS: 120.455	THR ELEV: 13
VDF: 120.455	HGT RELATED TO THR 26
CIRCLING HGT RELATED TO AD ELEV	
DIST IN NM. ELEV, ALT AND HGT IN FT	
SCALE 1:250 000	VAR 7° E (2020)

TRANSITION ALTITUDE 7000



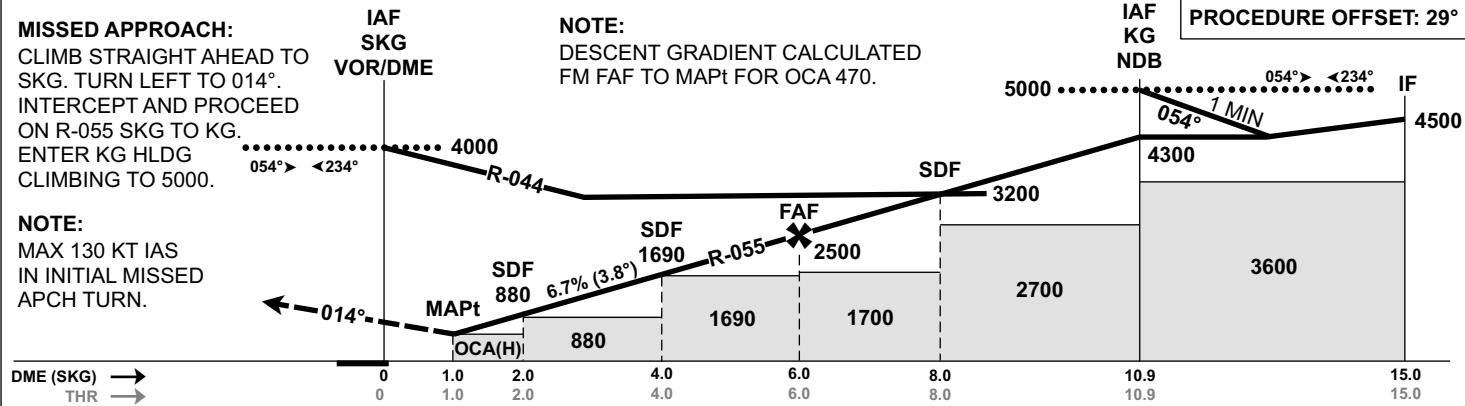
DIST TO SKG	9	8	7	6	5	4	3	2
ALT (HGT)	-	-	-	2500 (2487)	2100 (2087)	1690 (1677)	1290 (1277)	880 (867)

MISSED APPROACH:
CLIMB STRAIGHT AHEAD TO SKG. TURN LEFT TO 014°. INTERCEPT AND PROCEED ON R-055 SKG TO KG. ENTER KG HLDG CLIMBING TO 5000.

NOTE:
MAX 130 KT IAS IN INITIAL MISSED APCH TURN.

NOTE:
DESCENT GRADIENT CALCULATED FM FAF TO MAPt FOR OCA 470.

PROCEDURE OFFSET: 29°



CAT OF ACFT	A				B		C		D	
	2.5%*	3.0%*	4.0%*	4.0%*	4.0%*	4.0%*	4.0%*	4.0%*	4.0%*	
OCA (H) STRAIGHT- IN	1820 (1807)	1310 (1297)	470 (457)	470 (456)	1120 (1106)	-	-	-	-	
	1820 (1806)	1310 (1296)	-	-	-	-	-	-	-	
	470 (456)	-	-	-	-	-	-	-	-	
CIRCLING	1820 (1806)	1310 (1296)	-	-	-	-	-	-	-	
	1310 (1296)	-	-	-	-	-	-	-	-	
	470 (456)	-	-	-	-	-	-	-	-	

NOTE: CIRCLING S OF AD ONLY. *MNM MISSED APCH CLIMB GRADIENT.

CHANGES: EDITORIALS.

ATS AIRSPACE CLASSIFICATION: REF ENR 1.4