

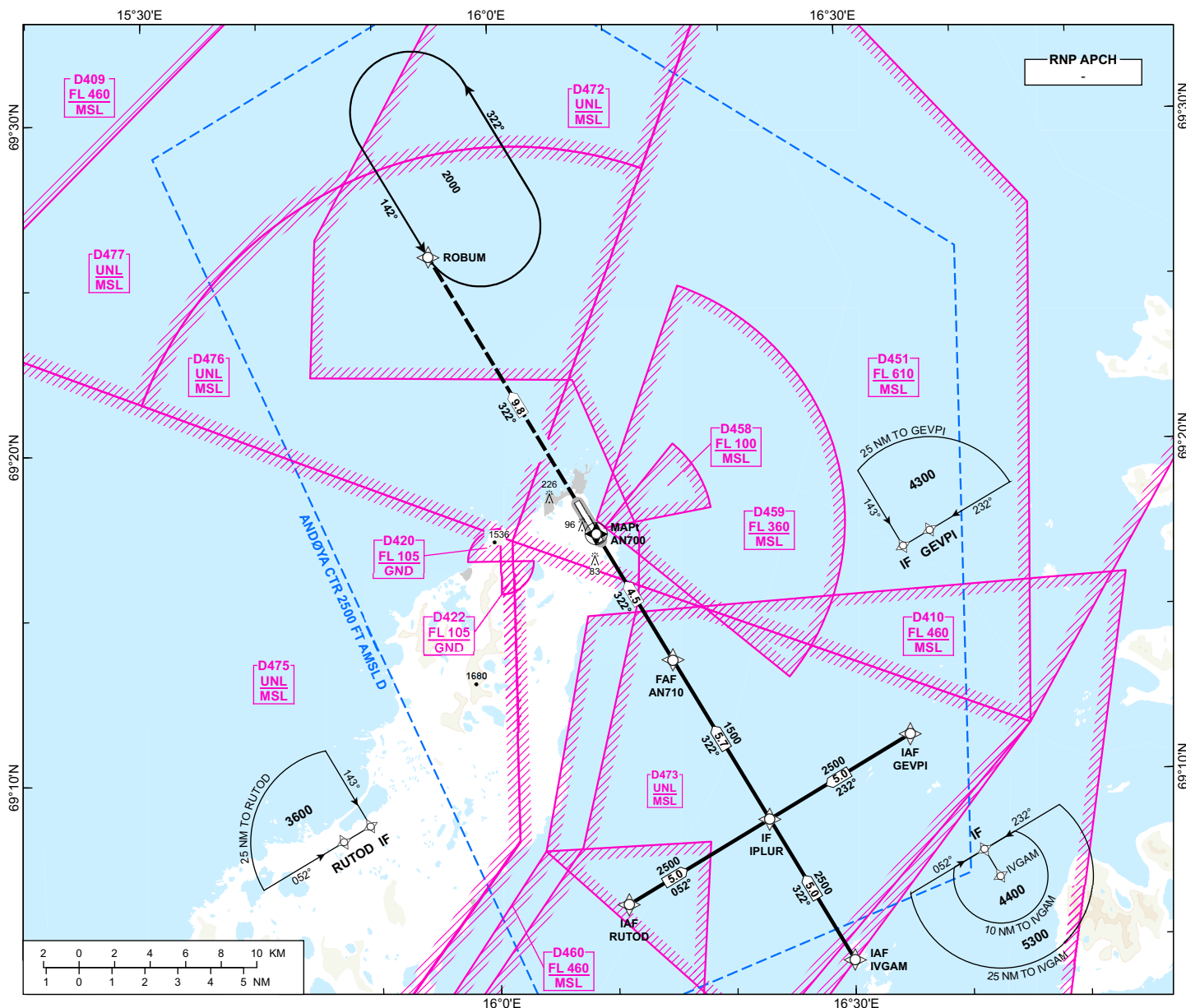
**INSTRUMENT APPROACH CHART - ICAO**

**ANDØYA  
ANDENES**

**RNP X RWY 32**

TRANSITION ALTITUDE  
7000

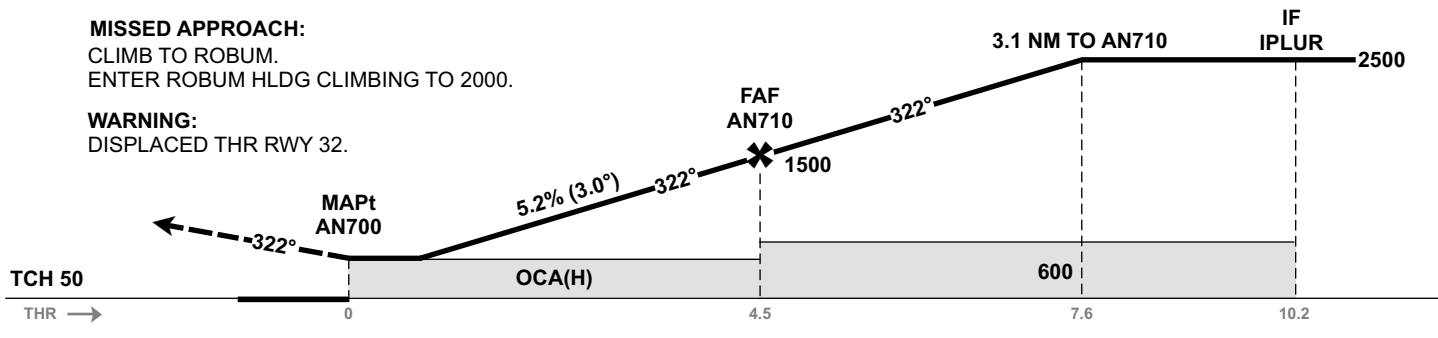
ATIS: 136.130	AD ELEV: 30
TWR: 118.205 118.705	THR ELEV: 20
122.100	HGT RELATED TO THR 32
VDF: 118.205 118.705	CIRCLING HGT RELATED TO AD ELEV
122.100	DIST IN NM. ELEV, ALT AND HGT IN FT
SCALE 1:350 000	VAR 8°E (2020)



DIST TO AN700	8	7	6	5	4	3	2	1
ALT (HGT)	-	-	-	-	1350(1330)	1030(1010)	710(690)	390(370)

**MISSED APPROACH:**  
CLIMB TO ROBUM.  
ENTER ROBUM HLDG CLIMBING TO 2000.

**WARNING:**  
DISPLACED THR RWY 32.



CAT OF ACFT		A	B	C	D
OCA (H) STRAIGHT-IN	LNAV		360 (340)		-
	CIRCLING	500 (470)	1540 (1510)	1740 (1710)	-

NOTE: NO CIRCLING W OF AD

CHANGES: TEMP PROCEDURE. DISPLACED THR RWY 32.

ATS AIRSPACE CLASSIFICATION: REF ENR 1.4