

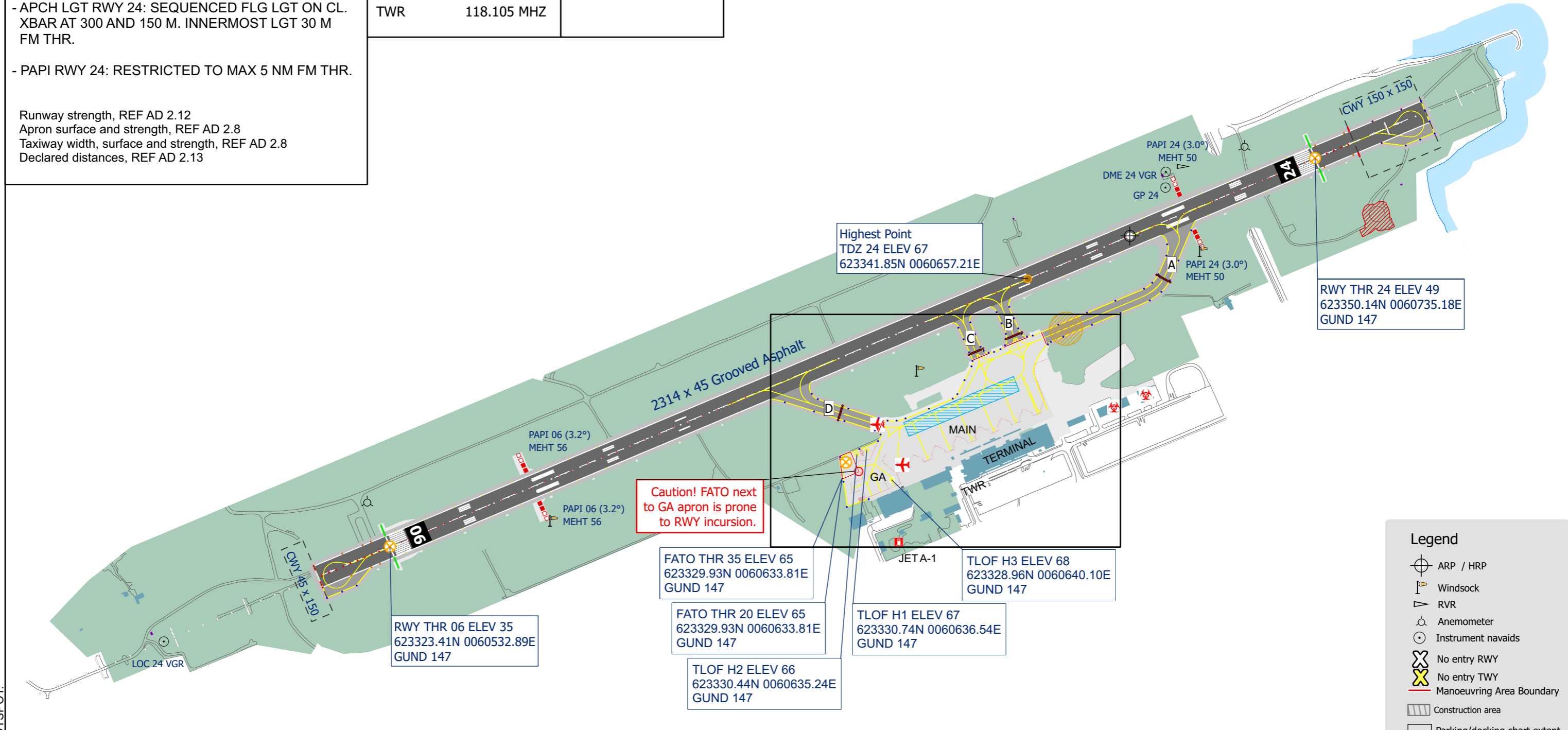
<b>AERODROME CHART</b> <b>ICAO</b>	<b>ARP 623345N 0060711E</b> <b>AD ELEV 70</b>	<b>ÅLESUND, VIGRA</b> <b>NORWAY</b>
---------------------------------------	--	--

**NOTES - REMARKS**

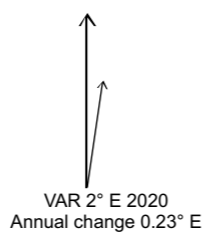
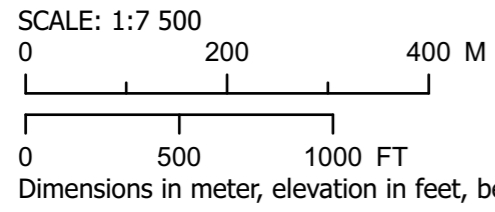
- APCH LGT RWY 06: LIL ON CL AND SECOND XBAR. XBAR AT 600, 450, 300 AND 150 M. SEQUENCED FLG LGT FROM 2720 M TO THR, 9 ELEMENTS. LED.
- APCH LGT RWY 24: SEQUENCED FLG LGT ON CL. XBAR AT 300 AND 150 M. INNERMOST LGT 30 M FM THR.
- PAPI RWY 24: RESTRICTED TO MAX 5 NM FM THR.

Runway strength, REF AD 2.12  
Apron surface and strength, REF AD 2.8  
Taxiway width, surface and strength, REF AD 2.8  
Declared distances, REF AD 2.13

<b>COM</b>		<b>RUNWAY</b>	
ATIS	128.655 MHZ	<b>RWY</b>	<b>BRG</b>
DEICE	121.780 MHZ	06	062.84
DEICE	131.755 MHZ	24	242.87
TWR	118.105 MHZ		



CHANGES: NEW HOTSPOT.



**Legend**

- ARP / HRP
- Windsock
- RVR
- Anemometer
- Instrument navaid
- No entry RWY
- No entry TWY
- Manoeuvring Area Boundary
- Construction area
- Parking/docking chart extent
- Fire drill area
- Engine Testing Area
- Non accessible area
- De-Ice
- Storage of dangerous goods
- Parking for aircraft carrying dangerous goods