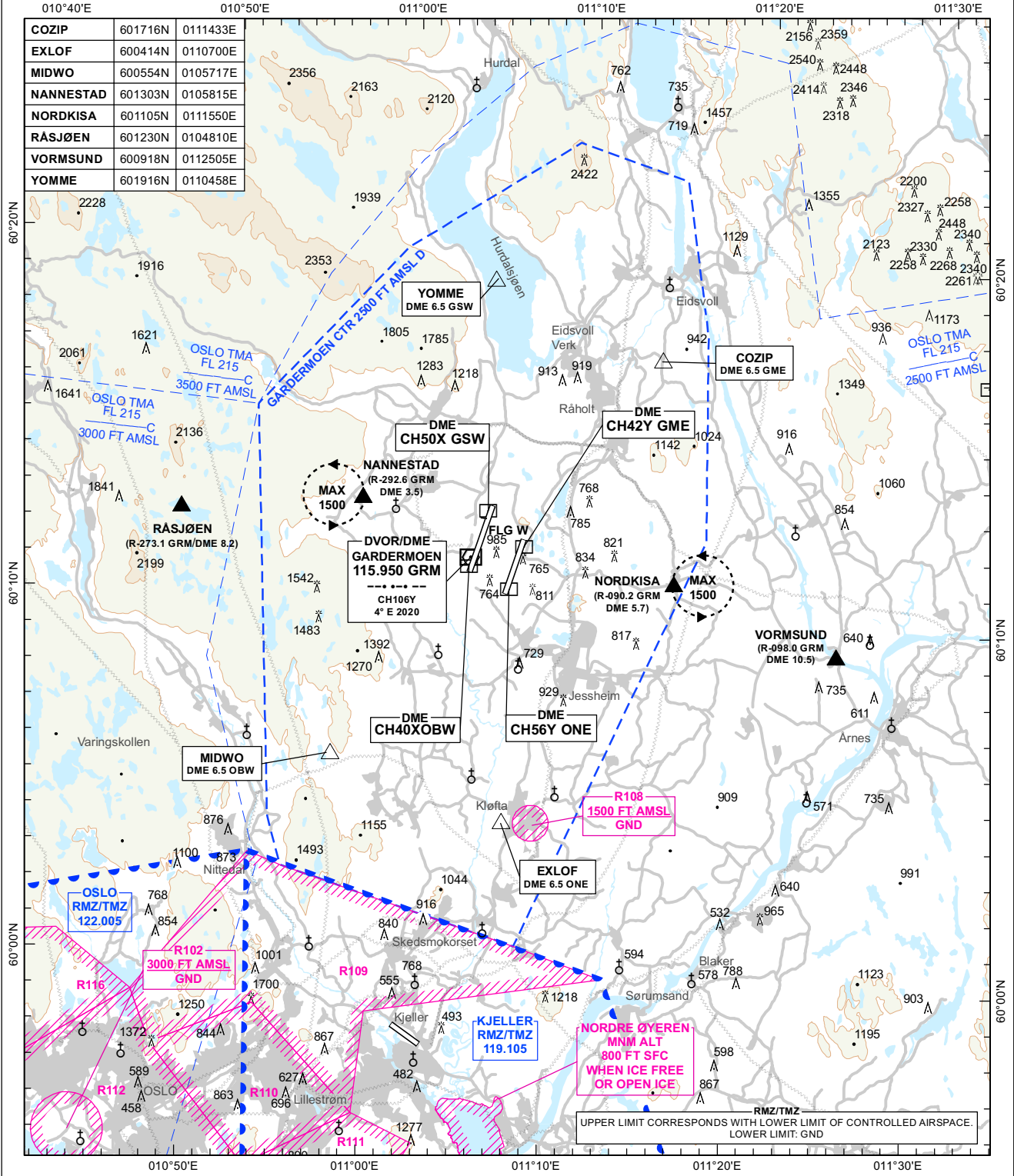


VAC - VISUAL APPROACH CHART **PLAN VIEW SCALE:1:300 000**

ATIS ARR	126.130
ATIS DEP	127.155
TWR E	120.105
TWR W	118.305
GND E	121.905
GND W	121.605
CLR	121.680 / 121.930
APP	118.480 / 120.455
DIR	136.405 (119.980)
FIN	128.905

AERODROME ELEVATION: 682 FT	ELEV, ALT AND HGT IN FT
OBSTACLES LESS THAN 100 FT GND ARE NORMALLY NOT SHOWN	
MAGNETIC VARIATION: 4° E (2020)	
TRANSITION ALTITUDE: 7000	

OSLO
GARDERMOEN
NORWAY

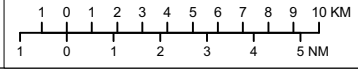


VFR RCF PROC
 1. SQUAWK 7600.
 2. LEAVE CTR AND PROCEED TO A DIFFERENT AD.
 3. IF THE PILOT CONSIDERS FLYING TO A DIFFERENT AD TO BE UNSAFE, PROCEED VIA VFR REPORTING POINT SHOWN WITHOUT CROSSING OVERHEAD THE AD OR EXTENDED RCL TO A POSITION 2 NM E OR W OF AD.
 4. WATCH TWR FOR LIGHT SIGNALS.
 5. IF POSSIBLE, CALL TWR ON +47 64 81 30 62.

NOTE
 1. VFR AND IFR VISUAL APPROACH MUST TAKE PLACE IN A WAY THAT REDUCES NOISE AS MUCH AS POSSIBLE.
 2. ADDITIONAL PROCEDURES FOR IFR VISUAL APPROACH AND VFR FLIGHTS DESCRIBED IN AIP ENGM AD 2-22, FLIGHT PROCEDURES.

IFR VISUAL APPROACH
 1. VISUAL APP ARE LIMITED TO AIRCRAFTS NOT SUBJECT TO THE "REGULATION ON NOISE ABATEMENT FOR OSLO LUFTHAVN GARDERMOEN", REF AD 2.21. ITEM 1.
 2. VISUAL APP SHALL BE EXECUTED ACCORDING TO AIP ENGM AD 2-22, ITEM 2, FLIGHT PROCEDURES.
 3. TO AVOID CONFLICT WITH PARALLEL APP, DO NOT OVERSHOOT RCL WHEN TURNING FINAL, UNLESS OTHERWISE INSTRUCTED BY ATC.
 4. IN CASE OF MAP, FOLLOW THE CORRESPONDING RWY ILS MAP PROC TO ENSURE SEPARATION TO PARALLEL RWY DEPIARR.

PAPI
 PAPI RWY 01L 3°, MEHT 71 FT.
 PAPI RWY 01R 3°, MEHT 69 FT.
 PAPI RWY 19L 3°, MEHT 72 FT.
 PAPI RWY 19R 3°, MEHT 71 FT.



CHANGES: FREQ.