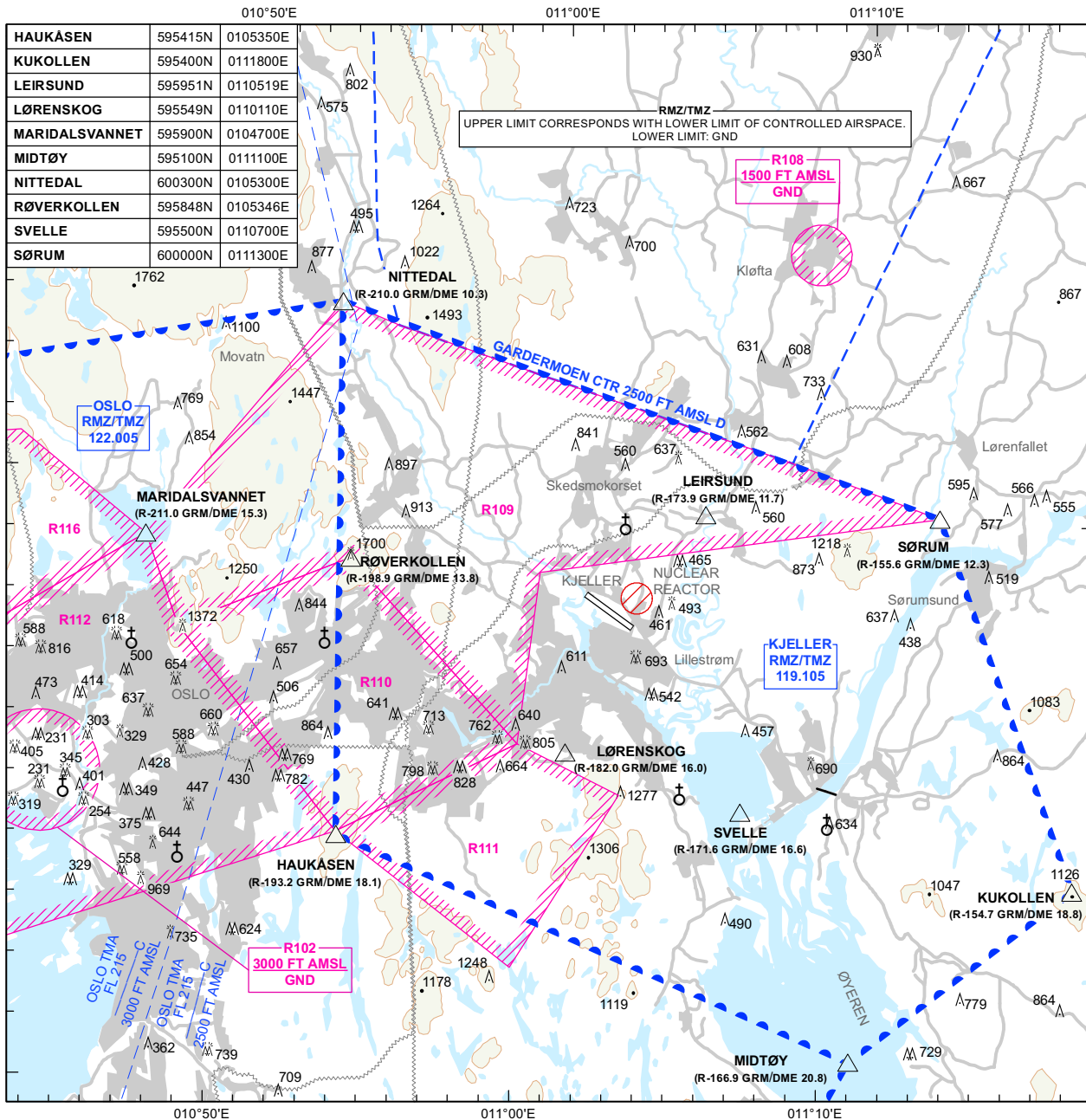


VFR - VISUAL FLIGHT RULES

PLAN VIEW SCALE:1:200 000

KJELLER RADIO: 119.105	AERODROME ELEVATION: 354 FT	ELEV, ALT AND HGT IN FT	LILLESTRØM KJELLER NORWAY
OBSTACLES LESS THAN 100 FT GND ARE NORMALLY NOT SHOWN			
MAGNETIC VARIATION: 4° E (2020)			
TRANSITION ALTITUDE: 7000	ONLY MAJOR POWER LINES SHOWN		

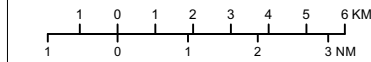


DEPARTURE

1. PERFORM RADIO CHECK AND SQUAWK 7000 AT TWY A BEFORE ENTERING RWY.
2. REPORT INTENTIONS AND CLIMB ON RWY HDG TO MNM 1500 FT BEFORE TURNING TOWARDS DESTINATION CLIMBING TO MNM 2300 FT.
3. REPORT LEAVING KJELLER RMZ WITH POSITION RELATIVE TO CLOSEST REPORTING POINT.

APCH AND LANDING

1. ENTER KJELLER RMZ TO THE RIGHT OF A REPORTING POINT BELOW 2000 FT AND REPORT INTENTIONS.
2. ENTER LANDING PATTERN AT 1500 FT.
3. MIL TFC HAS PRIORITY OVER CIV TFC. RIGHT HAND PATTERN AND DCT TO FINAL CAN BE DONE WHEN CAUSING NO CONFLICT WITH OTHER TFC. TFC IN LANDING PATTERN HAS PRIORITY TO TFC ON LONG FINAL, AND TFC IN LEFT HAND PATTERN HAS PRIORITY TO TFC IN RIGHT HAND PATTERN. DO NOT CROSS EXTENDED CL LESS THAN 2 NM FROM AD.
4. REPORT ENTERING EARLY/MID/LATE DOWNWIND, BASE TURN AND FINAL TURN.
5. IF ENTERING DIRECT TO FINAL, REPORT 2 NM.



ATS AIRSPACE CLASSIFICATION: REF ENR 1.4
LEGENDS: REF GEN 2.3

CHANGES: FREQ.