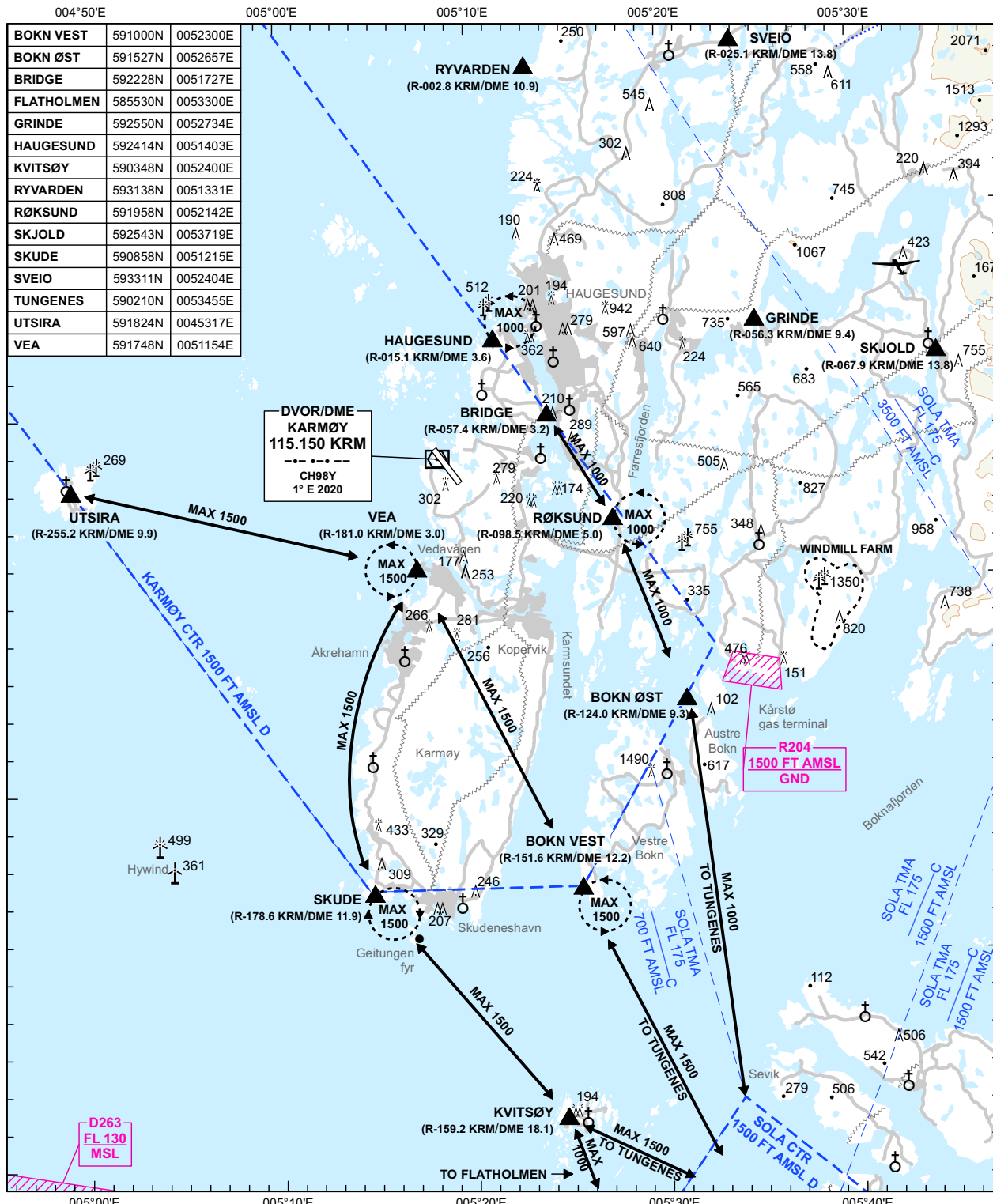


VAC - VISUAL APPROACH CHART PLAN VIEW SCALE:1:300 000

ATIS: 118.180	AERODROME ELEVATION: 87 FT	ELEV, ALT AND HGT IN FT	HAUGESUND KARMØY NORWAY
TWR: 120.505	OBSTACLES LESS THAN 100 FT GND ARE NORMALLY NOT SHOWN		
MAGNETIC VARIATION: 1° E (2020)			
TRANSITION ALTITUDE: 7000	ONLY MAJOR POWER LINES SHOWN		

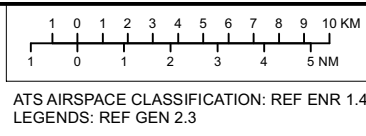


VFR RCF PROC

- SQUAWK 7600
- PROCEED VIA ROUTES SHOWN TO:
 - KALSTØ, 1 NM SW OF AD, OR
 - VISNES, 1 NM NE OF AD AND HOLD AT 750 FT.
- WATCH TWR FOR VISUAL SIGNALS.
- IF POSSIBLE, CALL KARMØY TWR TEL: (+47) 528 30 719

NOTE:
OVERLYING OF KÅRSTØ GAS TERMINAL BLW 2000 SHOULD BE AVOIDED. BE ADVISED OF POWERLINES CROSSING FØRRESFJORDEN AND KARMSUNDET.

PAPI RWY 13: LEFT 3.0°, MEHT 46 FT.
PAPI RWY 31: LEFT 3.0°, MEHT 45 FT.



CHANGES: PAPI AMENDED.