

STANDARD DEPARTURE CHART - INSTRUMENT (SID) - ICAO

6₉

MSA 25 NM ARP

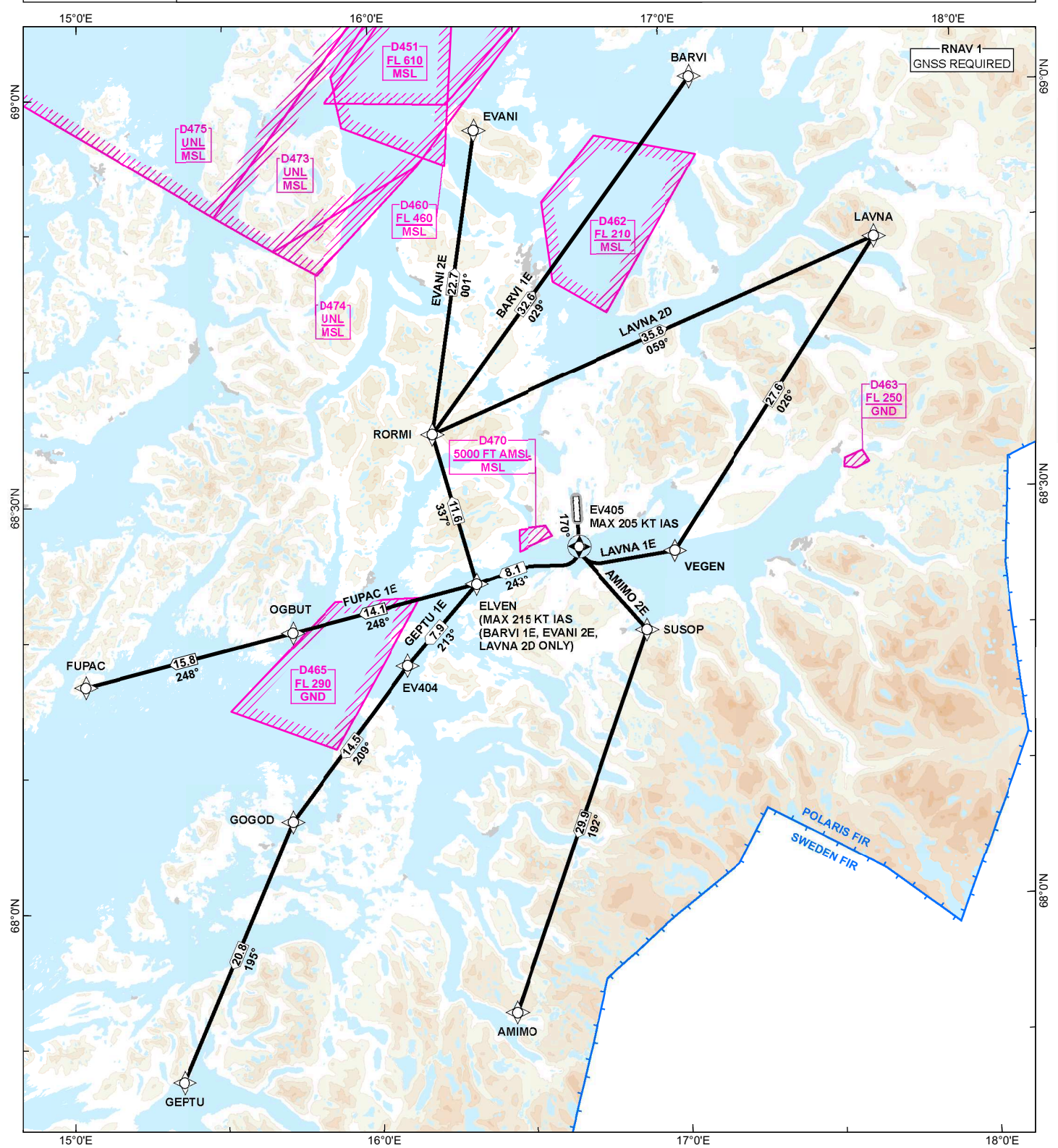
ATIS: 126.030
 APP: 120.105
 TWR: 120.105 118.005

ALT AND ELEV ARE IN FT
 DIST IN NM

HARSTAD/NARVIK / Evenes (ENEV) RNAV RWY 17

1:750 000 VAR 8° E (2020) TA 7000

AMIMO 2E, BARVI 1E, EVANI 2E, FUPAC 1E, GEPTU 1E, LAVNA 1E, LAVNA 2D



CHANGES: PIKOX 1E WITHDRAWN, FUPAC 1E ADDED, AMIMO 2E MODIFIED, EDITORIALS.

ROUTE AND WAYPOINT DESCRIPTIONS
ON THE SUCCEEDING PAGES

ATS AIRSPACE CLASSIFICATIONS: REF ENR 1.4
LEGEND: REF GEN 2.3

