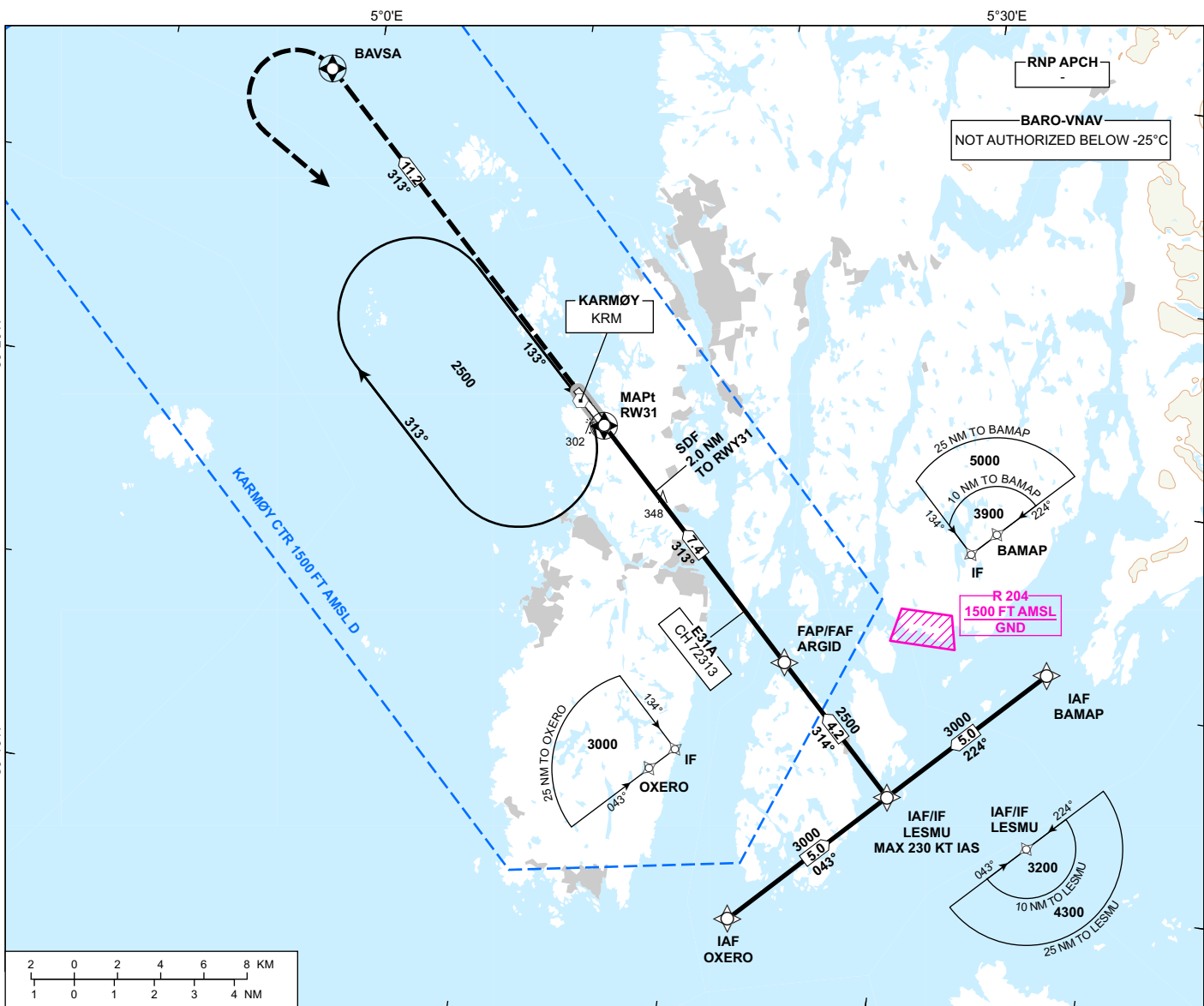


**INSTRUMENT APPROACH CHART - ICAO**

ATIS: 118.180	AD ELEV: 87
APP: 119.605 (SOLA)	THR ELEV: 86
TWR: 120.505	HGT RELATED TO THR 31
	CIRCLING HGT RELATED TO AD ELEV
	DIST IN NM. ELEV, ALT AND HGT IN FT
SCALE 1:300 000	VAR 1° E (2020)

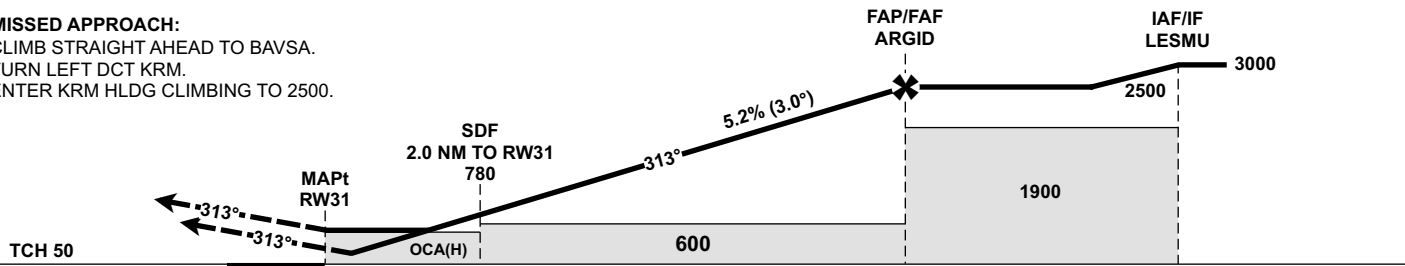
**HAUGESUND  
KARMØY  
RNP Z RWY 31**

TRANSITION ALTITUDE  
7000



DIST TO RW31	9	8	7	6	5	4	3	2
ALT (HGT)	-	-	2370 (2284)	2050 (1964)	1730 (1644)	1420 (1334)	1100 (1014)	780 (694)

**MISSED APPROACH:**  
CLIMB STRAIGHT AHEAD TO BAVSA.  
TURN LEFT DCT KRM.  
ENTER KRM HLDG CLIMBING TO 2500.



CAT OF ACFT		A	B	C	D
OCA (H) STRAIGHT- IN	LPV	309 (223)	317 (231)	332 (246)	343 (257)
	LNAV/VNAV	440 (354)	450 (364)	460 (374)	470 (384)
	LNAV	560 (474)			
CIRCLING		610 (523)	650 (563)	930 (843)	940 (853)

NOTE:

CHANGES: THR ELEV, OCA(H) VALUES, DIST/ALT TABLE, EDITORIALS.

ATS AIRSPACE CLASSIFICATION: REF ENR 1.4