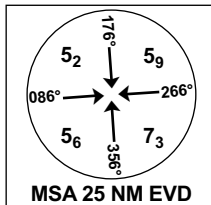


INSTRUMENT APPROACH CHART - ICAO

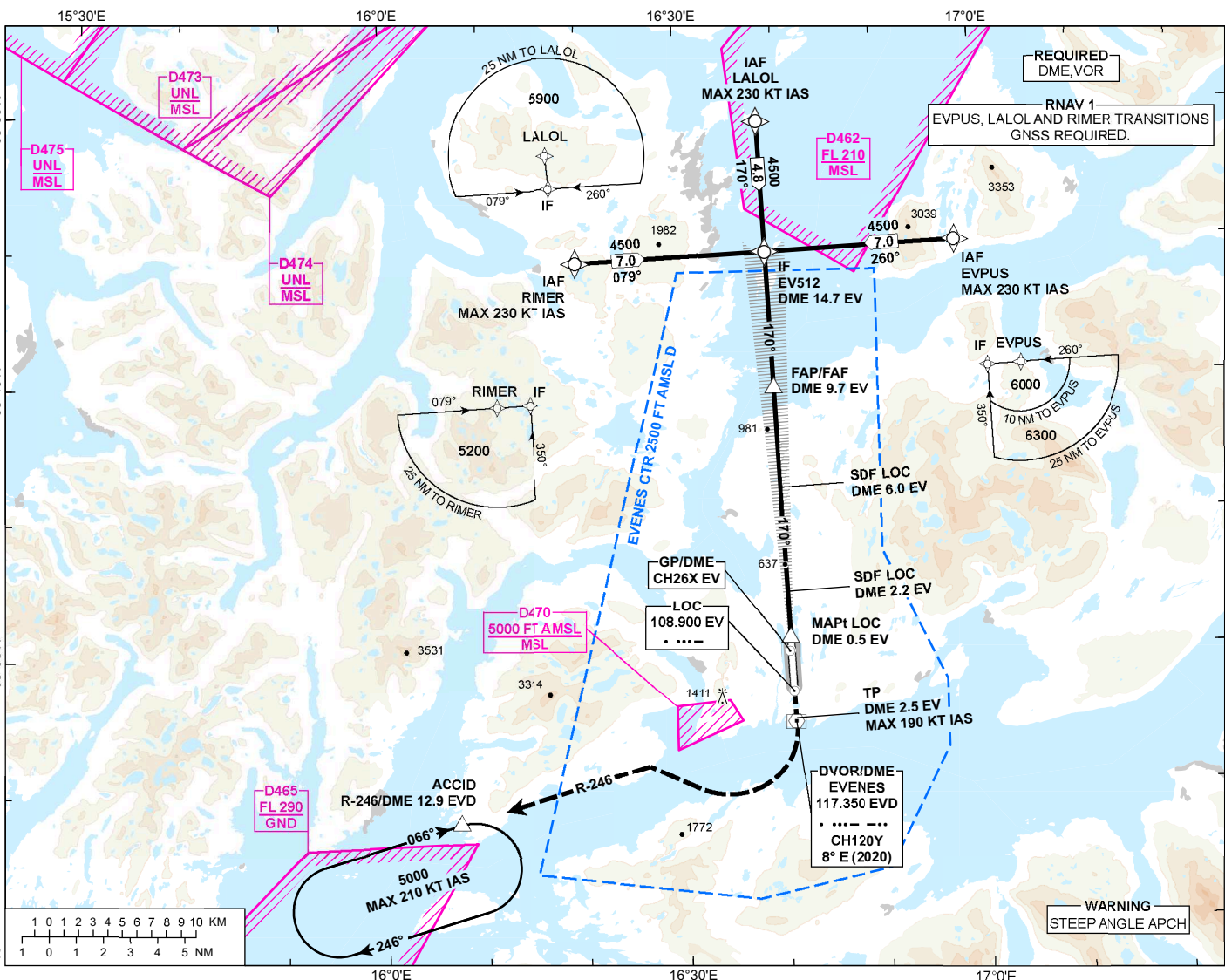
**HARSTAD/NARVIK
EVENES**

ILS or LOC RWY 17

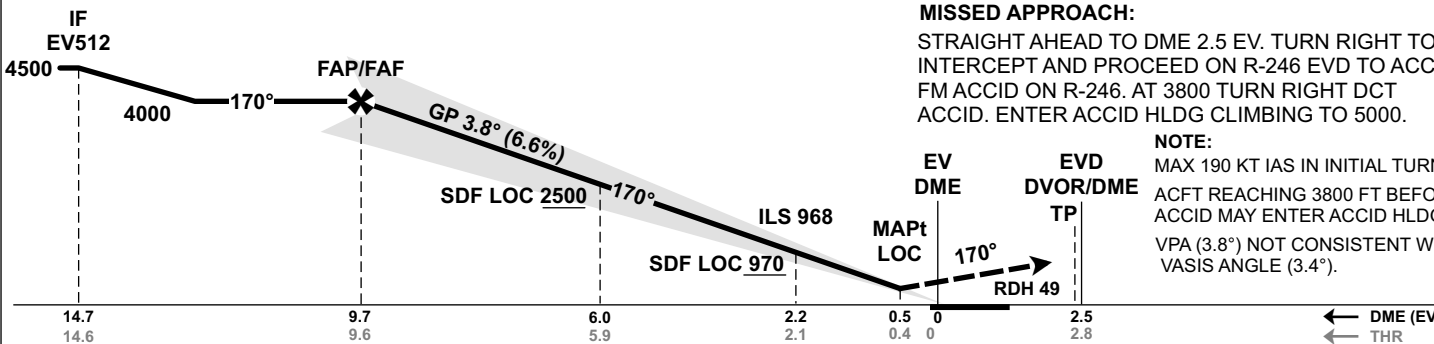
TRANSITION ALTITUDE
7000



ATIS: 126.030	AD ELEV: 85
APP: 120.105	THR ELEV: 82
TWR: 120.105 118.005	HGT RELATED TO THR 17
CIRCLING HGT RELATED TO AD ELEV	
DIST IN NM. ELEV, ALT AND HGT IN FT	
SCALE 1:450 000	VAR 8°E (2020)



DIST TO EV	9	8	7	6	5	4	3	2
ALT (HGT)	3720 (3638)	3320 (3238)	2920 (2838)	2500 (2418)	2110 (2028)	1700 (1618)	1300 (1218)	900 (818)



MISSED APPROACH:
STRAIGHT AHEAD TO DME 2.5 EV. TURN RIGHT TO INTERCEPT AND PROCEED ON R-246. FM ACCID ON R-246. AT 3800 TURN RIGHT DCT ACCID. ENTER ACCID HLDG CLIMBING TO 5000.

NOTE:
MAX 190 KT IAS IN INITIAL TURN. ACFT REACHING 3800 FT BEFORE ACCID MAY ENTER ACCID HLDG. VPA (3.8°) NOT CONSISTENT WITH VASIS ANGLE (3.4°).

CAT OF ACFT		A	B	C	D
OCA (H) STRAIGHT- IN	CAT I 2.5%*	742 (660)	757 (675)	771 (689)	784 (702)
	CAT I 3.0%*	564 (482)	578 (496)	592 (510)	607 (522)
	CAT I 4.0%*	408 (326)	422 (340)	436 (354)	450 (368)
	LOC 2.5%*	780 (698)	810 (728)	830 (748)	850 (768)
	LOC 3.0%*		620 (538)		640 (558)
CIRCLING		1130 (1045)	1700 (1615)	2090 (2005)	2140 (2055)

NOTE: CIRCLING W OF AD ONLY. *MNM MISSED APCH CLIMB GRADIENT.

CHANGES: COMPLETE REVISION.

ATS AIRSPACE CLASSIFICATION: REF ENR 1.4