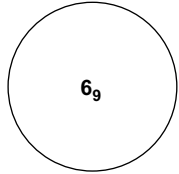
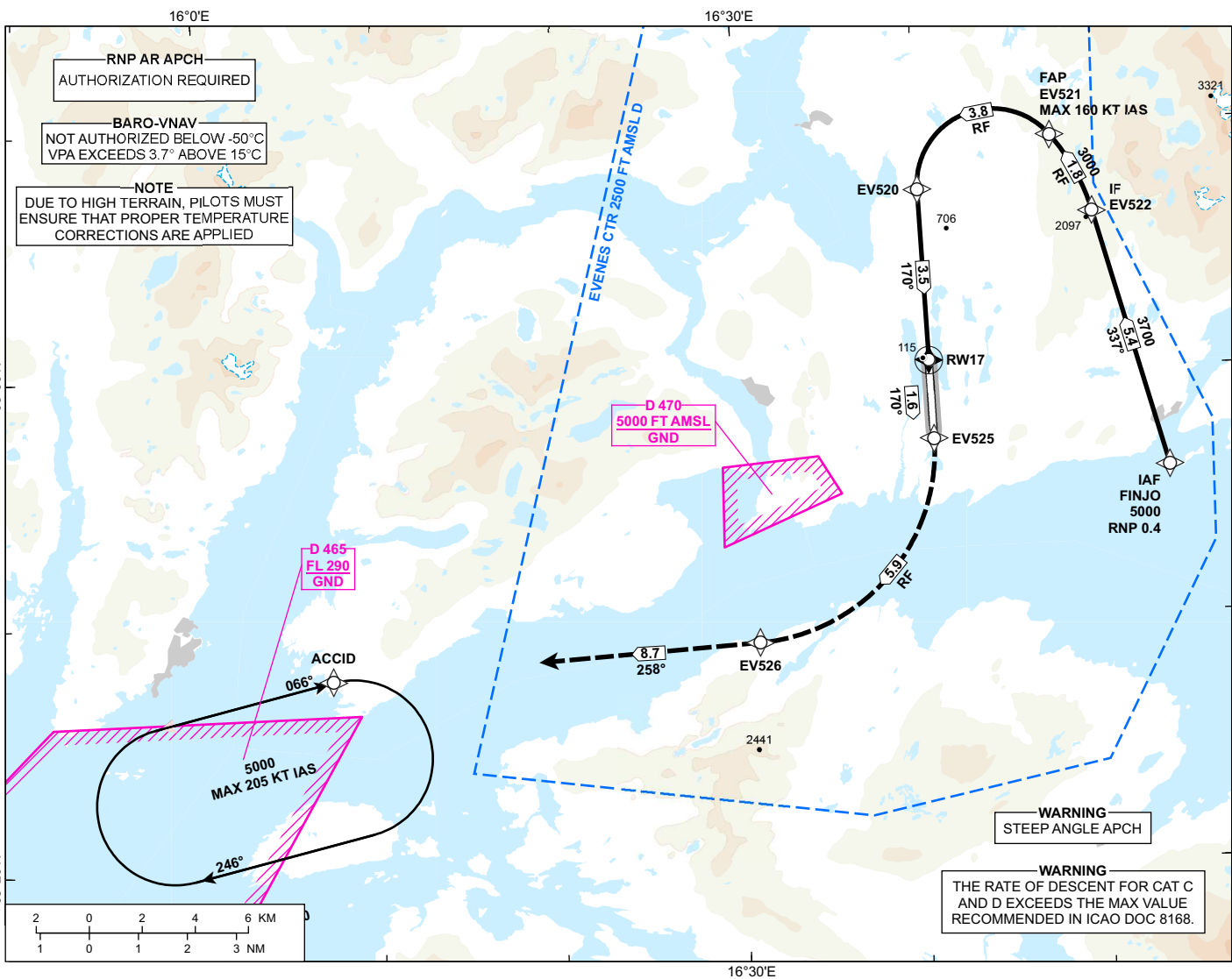


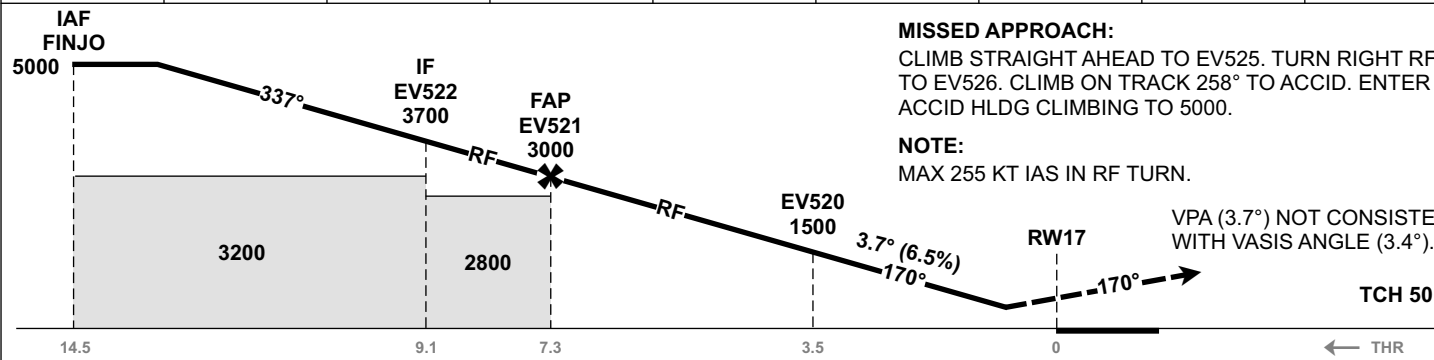
INSTRUMENT APPROACH CHART - ICAO

**HARSTAD/NARVIK
EVENES**
RNP E RWY 17 (AR)
TRANSITION ALTITUDE
7000

 <p>MSA 25 NM ARP</p>	ATIS: 126.030	AD ELEV: 85
	APP: 120.105	THR ELEV: 82
	TWR: 118.005 120.105	HGT RELATED TO THR 17
		CIRCLING HGT RELATED TO AD ELEV
		DIST IN NM. ELEV, ALT AND HGT IN FT
	SCALE 1:250 000	VAR 8° E (2020)



DIST TO RW17	9	8	7	6	5	4	3	2
ALT (HGT)	-	-	-	-	-	-	-	-



CAT OF ACFT		A	B	C	D
OCA (H) STRAIGHT- IN	RNP 0.3 (2.5%*)	1019 (937)	1043 (961)	1066 (984)	1088 (1006)
	RNP 0.3 (3.0%*)	897 (815)	911 (829)	924 (842)	937 (855)
	RNP 0.13 (3.0%*)	806 (724)	831 (749)	856 (774)	879 (797)
	RNP 0.13 (4.0%*)	482 (400)	510 (428)	538 (456)	562 (480)
	RNP 0.13 (5.0%*)	306 (224)	320 (238)	334 (252)	347 (265)
CIRCLING	-	-	-	-	-

NOTE: *MNM MISSED APCH CLIMB GRADIENT. CIRCLING NOT AVAILABLE.

CHANGES: ACCID HOLDING.

ATS AIRSPACE CLASSIFICATION: REF ENR 1.4