

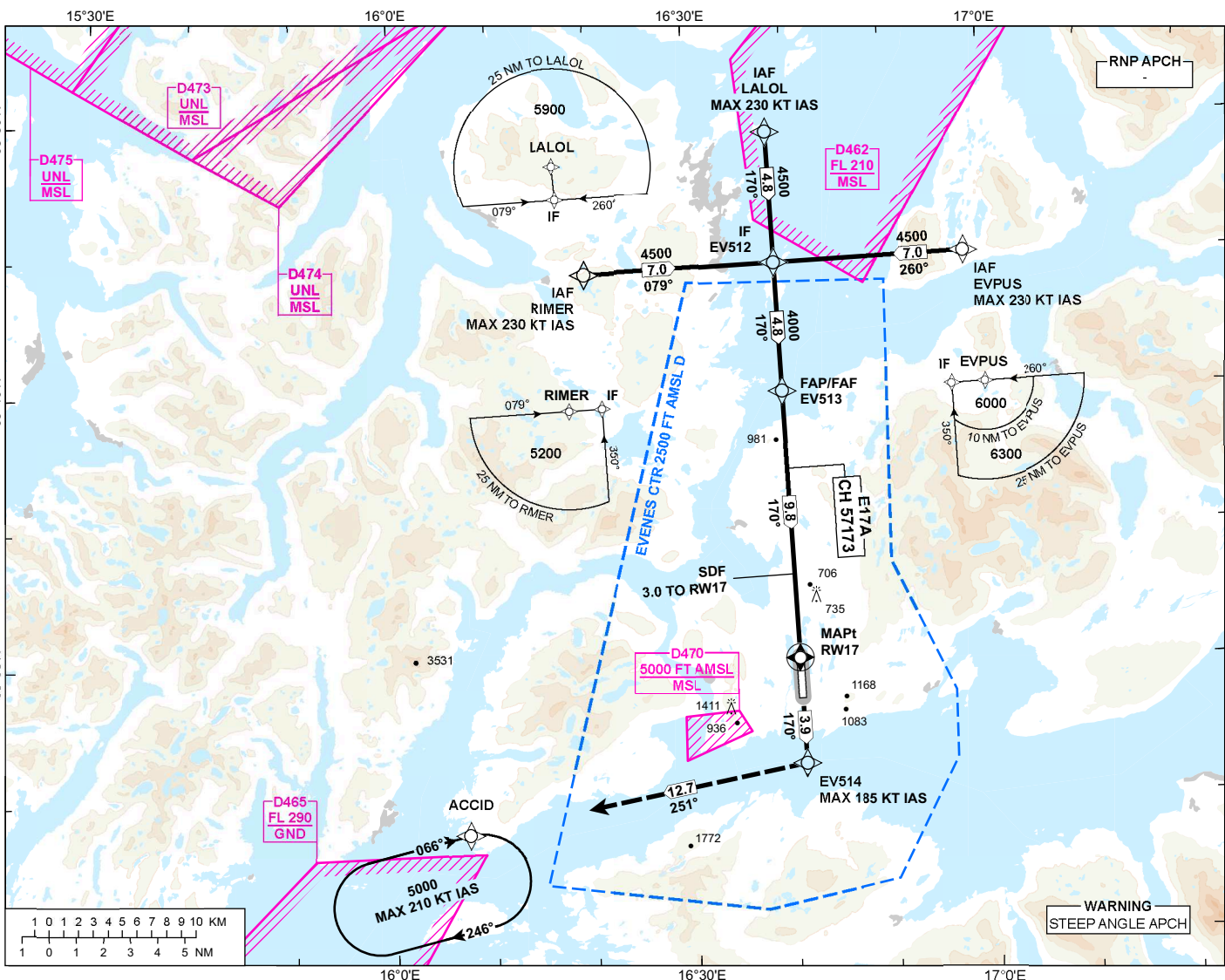
**INSTRUMENT APPROACH CHART - ICAO**

**HARSTAD/NARVIK  
EVENES**

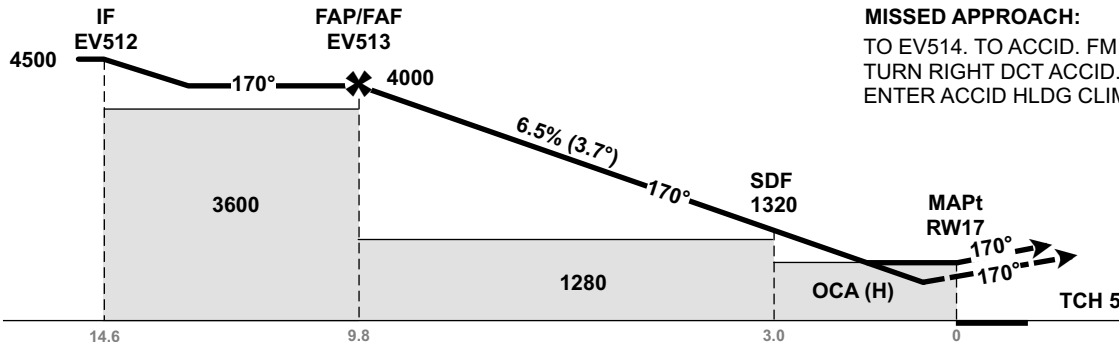
**RNP Z RWY 17**

**TRANSITION ALTITUDE  
7000**

ATIS: 126.030	AD ELEV: 85
APP: 120.105	THR ELEV: 82
TWR: 120.105 118.005	HGT RELATED TO THR 17
CIRCLING HGT RELATED TO AD ELEV	
DIST IN NM. ELEV, ALT AND HGT IN FT	
SCALE 1:450 000	VAR 8°E (2020)



DIST TO RW17	10	9	8	7	6	5	4	3
ALT (HGT)	-	3670 (3588)	3280 (3198)	2890 (2808)	2490 (2408)	2100 (2018)	1710 (1628)	1320 (1238)



**MISSED APPROACH:**  
TO EV514. TO ACCID. FM ACCID ON TRACK 251° TO 3800. TURN RIGHT DCT ACCID. ENTER ACCID HLDG CLIMBING TO 5000.

**NOTE:**  
MAX 185 KT IAS IN INITIAL TURN. ACFT REACHING 3800 FT BEFORE ACCID MAY ENTER ACCID HLDG. VPA (3.7°) NOT CONSISTENT WITH VASIS ANGLE (3.4°).

CAT OF ACFT		A	B	C	D
OCA (H) STRAIGHT- IN	LPV 2.5%*	659 (577)	673 (591)	686 (604)	700 (618)
	LPV 4.0%*	391 (309)	405 (323)	418 (336)	431 (349)
	LPV 5.0%*	306 (224)	320 (238)	334 (252)	347 (265)
	LNAV 2.5%*	1050 (968)			
	LNAV 3.5%*	1010 (928)			
CIRCLING		1130 (1045)	1700 (1615)	2090 (2005)	2140 (2055)

**NOTE:** CIRCLING W OF AD ONLY. \*MNM MISSED APCH CLIMB GRADIENT.

CHANGES: LNAV MINIMA, LPV MINIMA, CIRCLING MINIMA CAT B, EDITORIALS.

ATS AIRSPACE CLASSIFICATION: REF ENR 1.4

68°50'N  
68°40'N  
68°30'N  
68°20'N