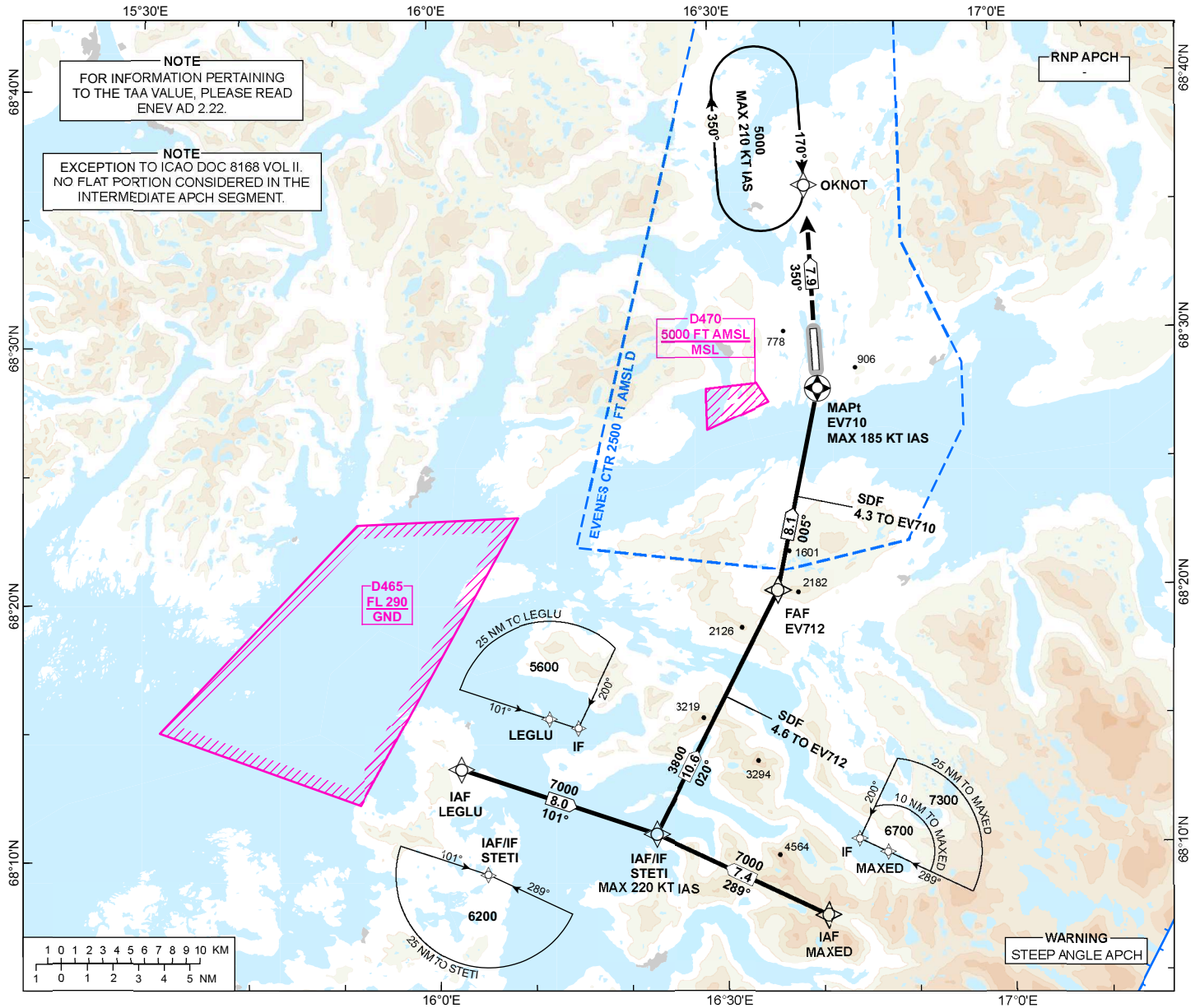


INSTRUMENT APPROACH CHART - ICAO

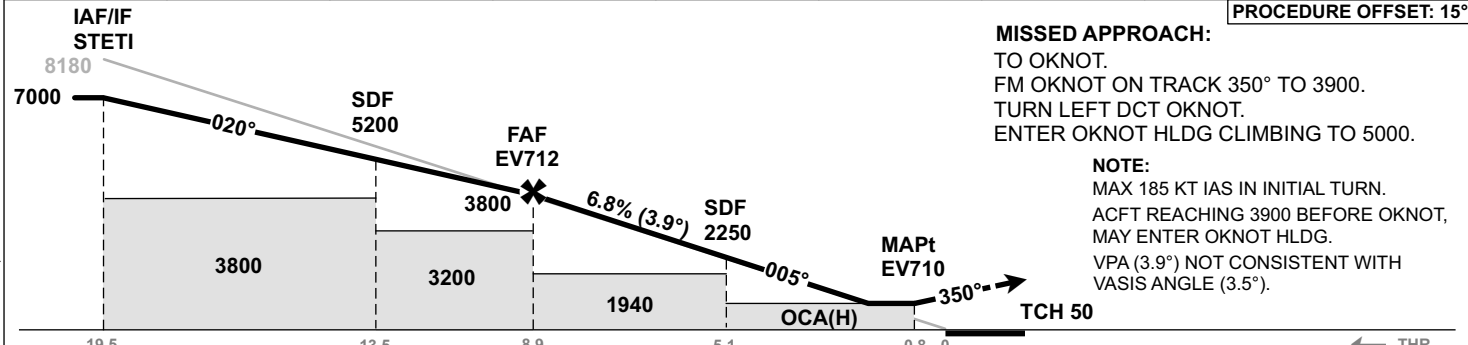
**HARSTAD/NARVIK
EVENES
RNP Z RWY 35**

ATIS: 126.030	AD ELEV: 85
APP: 120.105	THR ELEV: 81
TWR: 120.105 118.005	HGT RELATED TO THR RWY 35
	CIRCLING HGT RELATED TO AD ELEV
	DIST IN NM. ELEV, ALT AND HGT IN FT
SCALE 1:450 000	VAR 8°E (2020)

TRANSITION ALTITUDE
7000



DIST TO EV710	9	8	7	6	5	4	3	2
ALT (HGT)	-	3780 (3699)	3360 (3279)	2950 (2869)	2530 (2449)	2120 (2039)	1700 (1619)	1290 (1209)



MISSED APPROACH:
TO OKNOT.
FM OKNOT ON TRACK 350° TO 3900.
TURN LEFT DCT OKNOT.
ENTER OKNOT HLDG CLIMBING TO 5000.

NOTE:
MAX 185 KT IAS IN INITIAL TURN.
ACFT REACHING 3900 BEFORE OKNOT,
MAY ENTER OKNOT HLDG.
VPA (3.9°) NOT CONSISTENT WITH
VASIS ANGLE (3.5°).

CAT OF ACFT		A	B	C	D
OCA (H) STRAIGHT-IN	LNAV	-	-	-	-
	CIRCLING	1130 (1045)	1700 (1615)	2090 (2005)	2140 (2055)

NOTE: CIRCLING W OF AD ONLY.

CHANGES: LNAV MINIMA, CIRCLING CAT B MINIMA, MISSED APPROACH, EDITORIALS.

ATS AIRSPACE CLASSIFICATION: REF ENR 1.4