

INSTRUMENT APPROACH CHART - ICAO

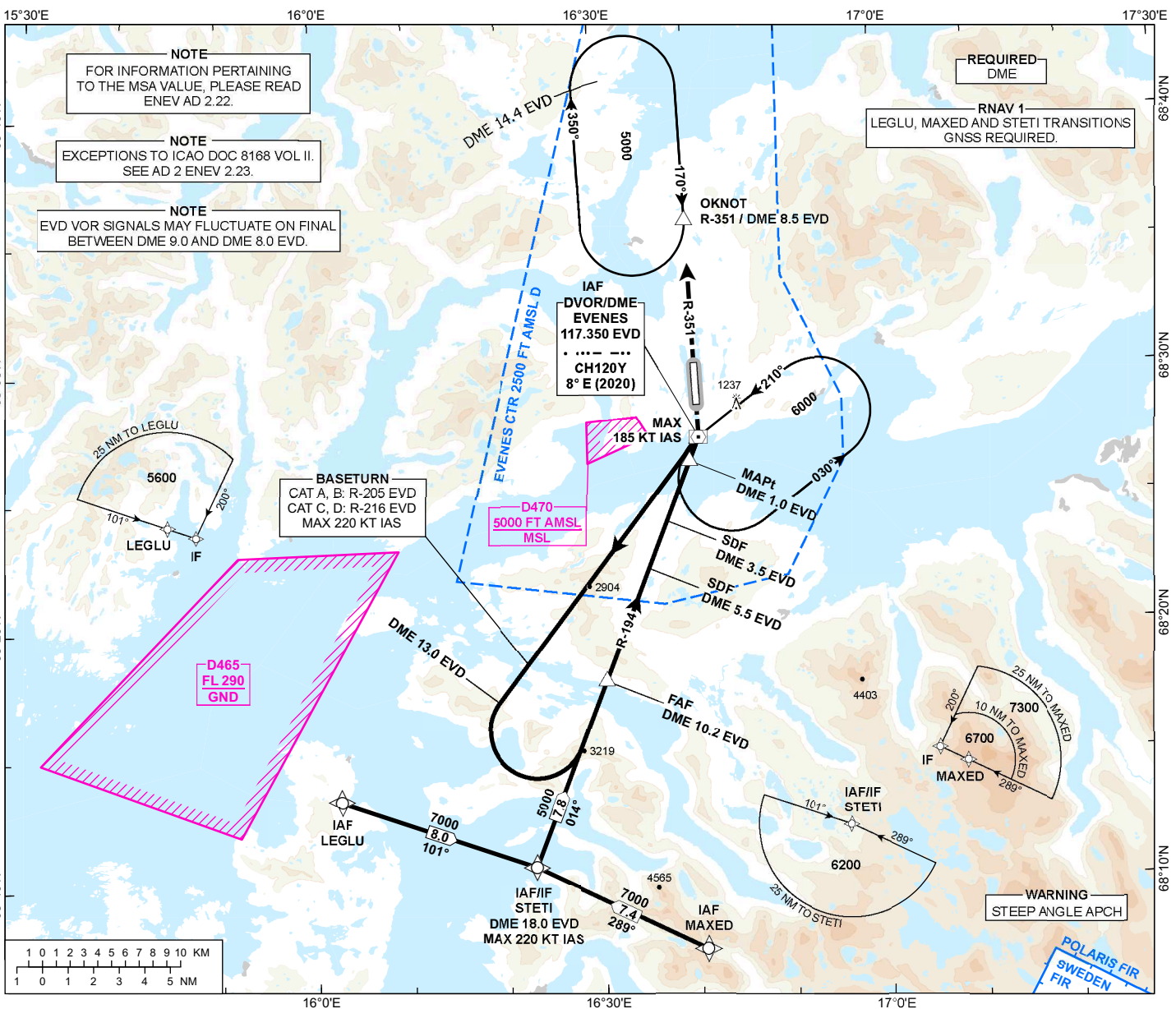
HARSTAD/NARVIK EVENES

VOR RWY 35

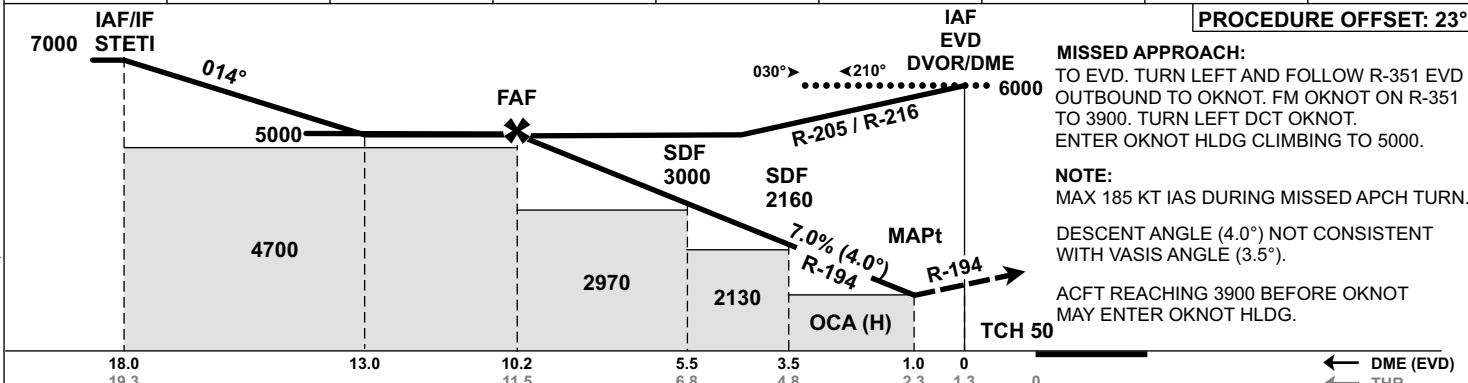
TRANSITION ALTITUDE
7000

ATIS: 126.030	AD ELEV: 85
APP: 120.105	THR ELEV: 81
TWR: 120.105 118.005	HGT RELATED TO THR RWY 35
	CIRCLING HGT RELATED TO AD ELEV
	DIST IN NM. ELEV, ALT AND HGT IN FT
SCALE 1:450 000	VAR 8°E (2020)

MSA 25 NM EVD



DIST TO EVD	8	7	6	5	4	3	2	1
ALT (HGT)	4070 (3989)	3650 (3569)	3220 (3139)	2800 (2719)	2370 (2289)	1950 (1869)	1530 (1449)	1100 (1019)



PROCEDURE OFFSET: 23°

MISSED APPROACH:
TO EVD. TURN LEFT AND FOLLOW R-351 EVD OUTBOUND TO OKNOT. FM OKNOT ON R-351 TO 3900. TURN LEFT DCT OKNOT. ENTER OKNOT HLDG CLIMBING TO 5000.

NOTE:
MAX 185 KT IAS DURING MISSED APCH TURN.
DESCENT ANGLE (4.0°) NOT CONSISTENT WITH VASIS ANGLE (3.5°).
ACFT REACHING 3900 BEFORE OKNOT MAY ENTER OKNOT HLDG.

CAT OF ACFT	A	B	C	D
OCA(H) STRAIGHT - IN			1100 (1019)	
CIRCLING	1130 (1045)	1700 (1615)	2090 (2005)	2140 (2055)

NOTE: CIRCLING W OF AD ONLY.

CHANGES: MISSED APCH, CIRCLING MINIMA CAT B, EDITORIALS.

ATS AIRSPACE CLASSIFICATION: REF ENR 1.4