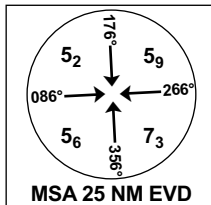


INSTRUMENT APPROACH CHART - ICAO

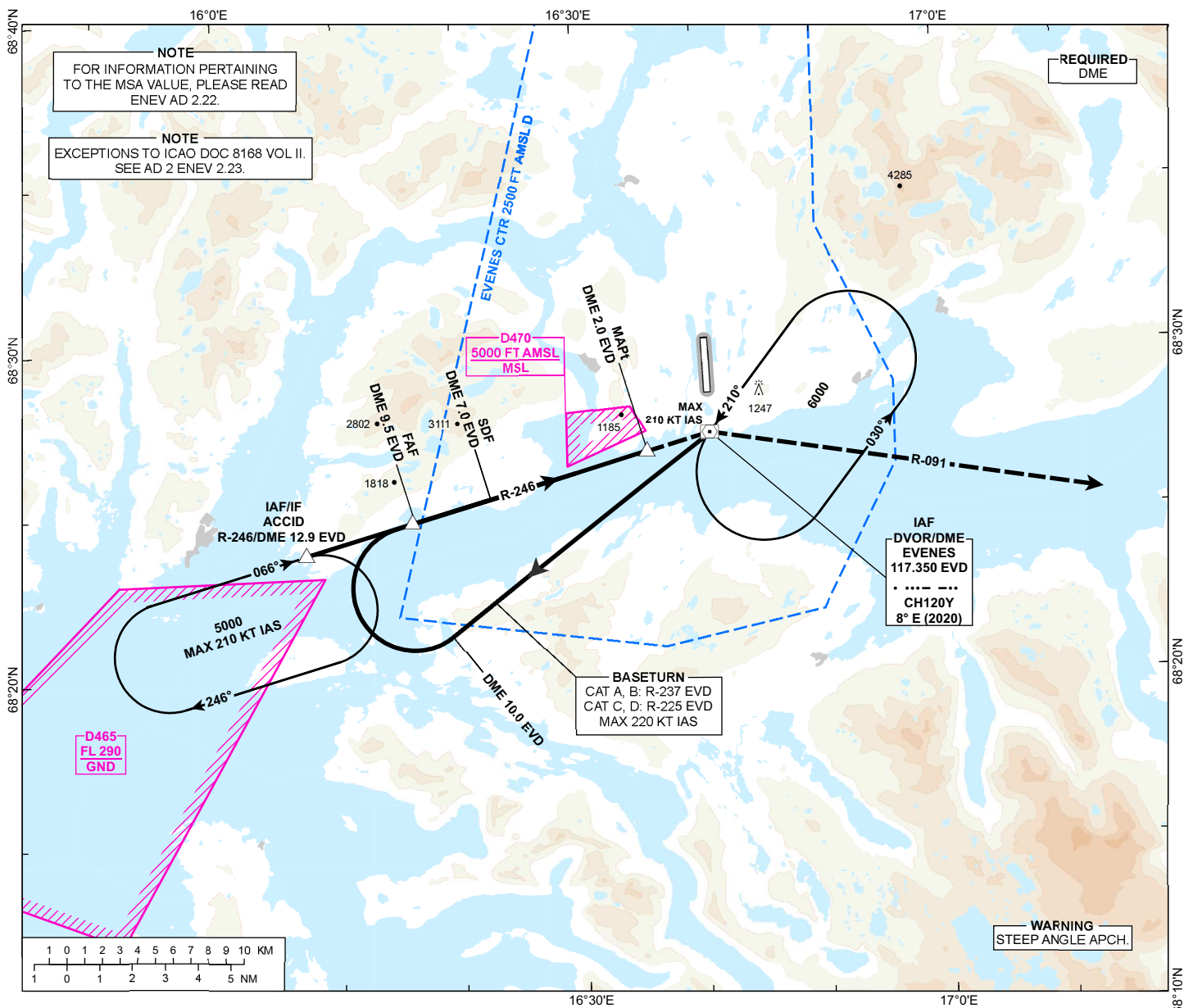
**HARSTAD/NARVIK
EVENES**

VOR-A

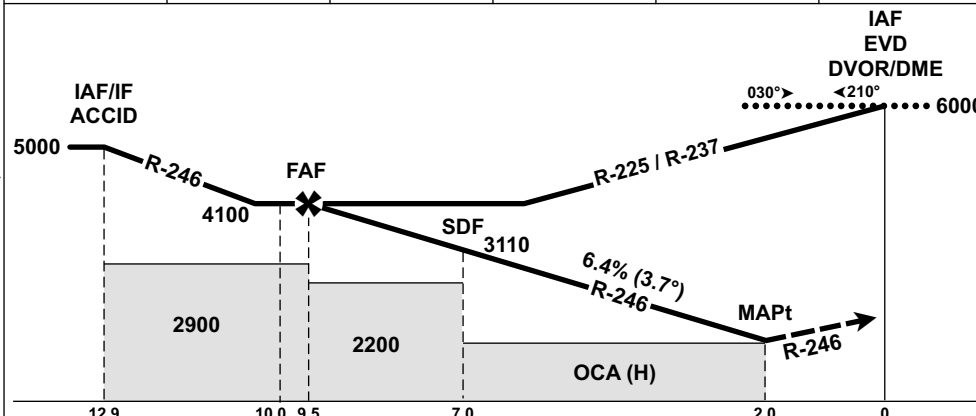


ATIS: 126.030	AD ELEV: 85
APP: 120.105	
TWR: 120.105 118.005	
CIRCLING HGT RELATED TO AD ELEV	
DIST IN NM. ELEV, ALT AND HGT IN FT	
SCALE 1:350 000	VAR 8°E (2020)

TRANSITION ALTITUDE 7000



DIST TO EVD	10	9	8	7	6	5	4	3
ALT (HGT)	-	3900 (3819)	3480 (3399)	3060 (2979)	2640 (2559)	2220 (2139)	1810 (1729)	1390 (1309)



MISSED APPROACH:
TO EVD. TURN RIGHT TO INTERCEPT AND PROCEED ON R-091 EVD. CONTINUOUS CLIMB TO 6000. AT 4000 OR DME 12.0 EVD, WHICHEVER EARLIER, TURN LEFT DCT EVD. ENTER EVD HLDG CLIMBING TO 6000.

NOTE:
MAX 210 KT IAS IN INITIAL MISSED APCH TURN.
DESCENT GRADIENT BASED ON CAT A MINIMUM.
DESCENT ANGLE (3.7°) NOT CONSISTENT WITH VASIS ANGLE RWY 35 (3.5°) OR RWY 17 (3.4°).

CAT OF ACFT	A	B	C	D
CIRCLING	1160 (1075)	1700 (1615)	2090 (2005)	2140 (2055)

NOTE: CIRCLING W OF AD ONLY.

CHANGES: COMPLETE REVISION, CIRCLING MINIMA CAT B.

ATS AIRSPACE CLASSIFICATION: REF ENR 1.4