

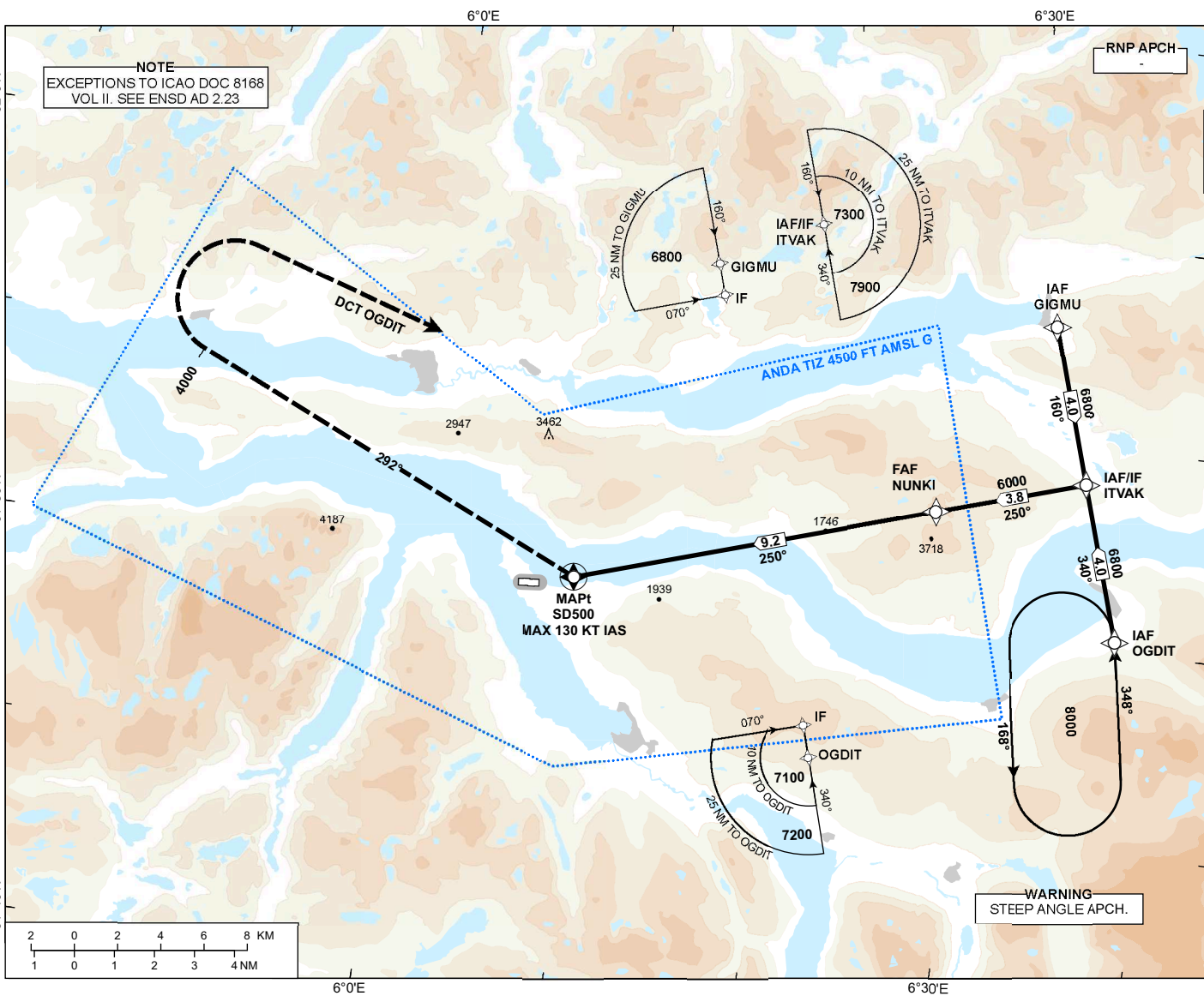
INSTRUMENT APPROACH CHART - ICAO

**SANDANE
ANDA**

RNP RWY 26

AFIS: 119.805	AD ELEV: 196
VDF: 119.805	THR ELEV: 180
HGT RELATED TO THR 26	
CIRCLING HGT RELATED TO AD ELEV	
DIST IN NM. ELEV, ALT AND HGT IN FT	
SCALE 1:300 000	VAR 2° E (2020)

TRANSITION ALTITUDE
7000

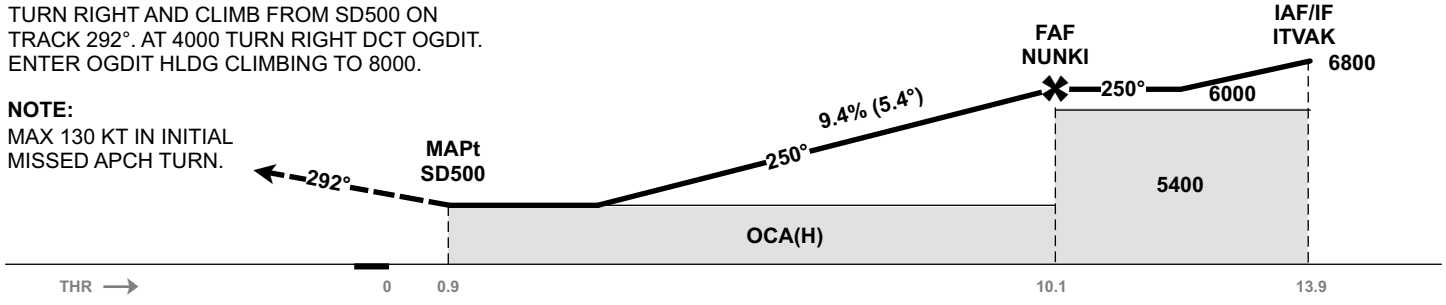


DIST TO SD500	9	8	7	6	5	4	3	2
ALT (HGT)	5890 (5710)	5320 (5140)	4740 (4560)	4170 (3990)	3600 (3420)	3030 (2850)	2450 (2270)	-

MISSED APPROACH:
TURN RIGHT AND CLIMB FROM SD500 ON TRACK 292°. AT 4000 TURN RIGHT DCT OGDIT. ENTER OGDIT HLDG CLIMBING TO 8000.

NOTE:
MAX 130 KT IN INITIAL MISSED APCH TURN.

PROCEDURE OFFSET: 12°



CAT OF ACFT		A	B	C	D
OCA (H) STRAIGHT- IN	LNAV 2.5%*	2590 (2410)	2610 (2430)	-	-
	LNAV 4.0%*	2310 (2130)	2330 (2150)	-	-
	LNAV 5.0%*	2120 (1940)	2150 (1970)	-	-
	LNAV 6.0%*	2020 (1840)		-	-
CIRCLING		2590 (2394)	3600 (3404)	-	-

NOTE: CIRCLING N OF AD ONLY. *MNM MISSED APCH CLIMB GRADIENT.

ATS AIRSPACE CLASSIFICATION: REF ENR 1.4