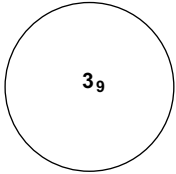
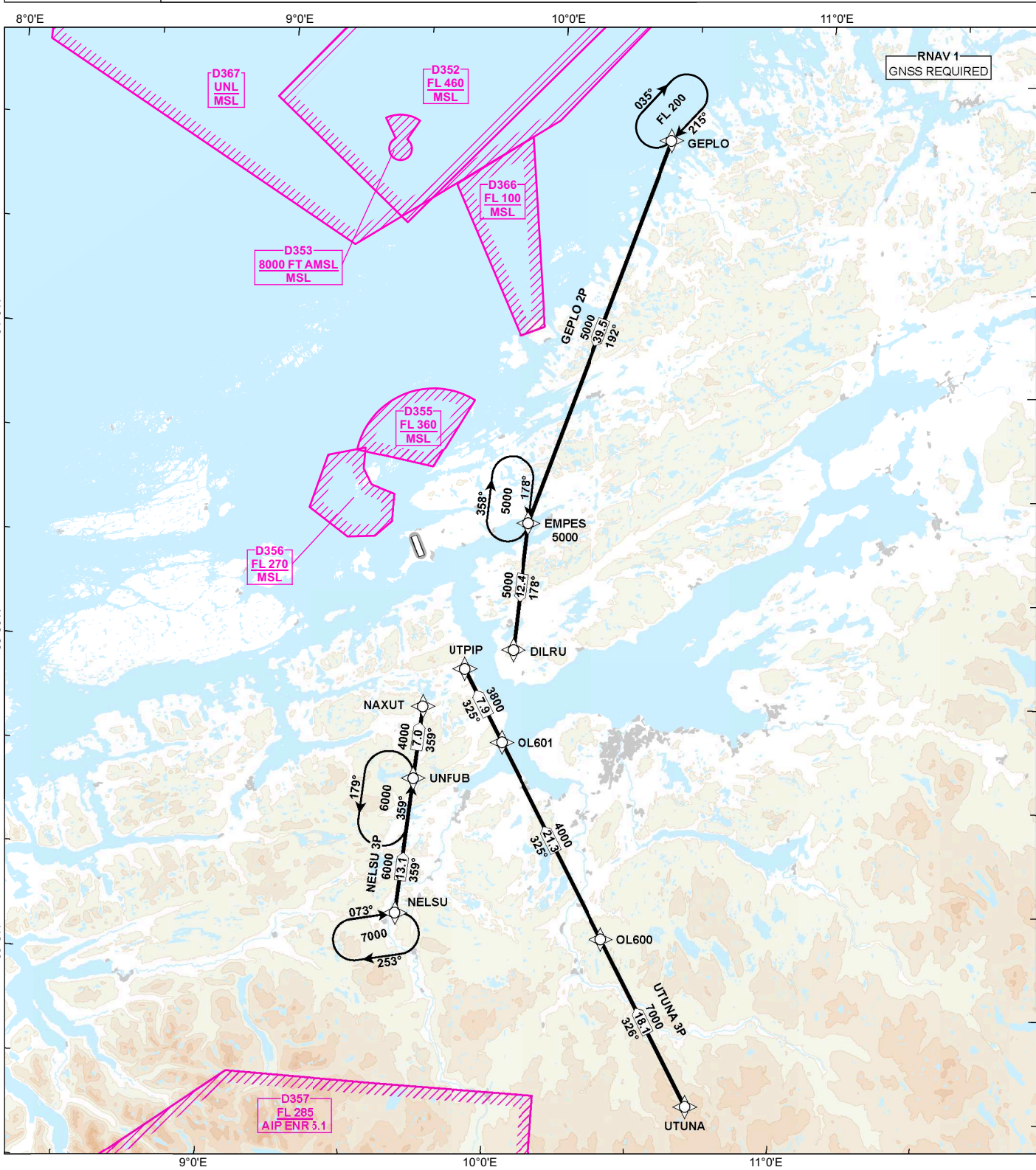


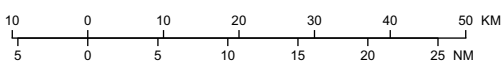
# STANDARD ARRIVAL CHART - INSTRUMENT (STAR) - ICAO

 <p>MSA 25 NM ARP</p>	ATIS: 119.330	ALT AND ELEV ARE IN FT DIST IN NM		<b>ØRLAND (ENOL)</b> <b>RNAV RWY 33</b> GEPL0 2P, NELSU 3P, UTUNA 3P	
	APP: 118.255 126.205				
	TWR: 118.705				
		1:1 000 000	VAR 4° E (2020)	TA 7000	



ROUTE AND WAYPOINT DESCRIPTIONS ON THE SUCCEEDING PAGES

ATS AIRSPACE CLASSIFICATIONS: REF ENR 1.4  
LEGEND: REF GEN 2.3



CHANGES: NELSU 3P TRACKS, UNFUB HLDG TRACKS.