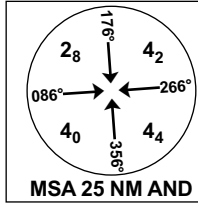


INSTRUMENT APPROACH CHART - ICAO

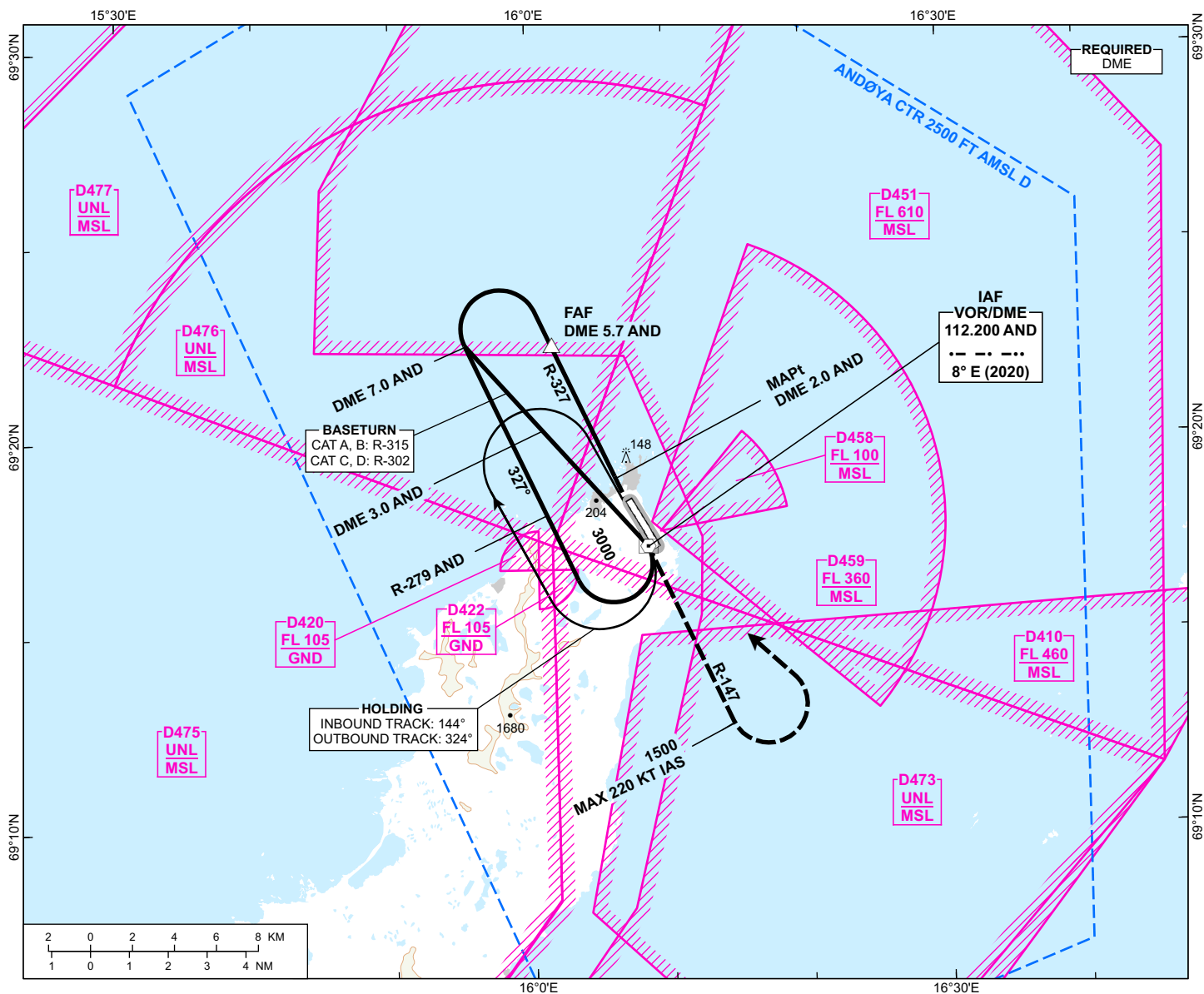


ATIS: 136.130	AD ELEV: 30
TWR: 118.205 118.705	THR ELEV: 29
122.100	HGT RELATED TO THR 14
VDF: 118.205 118.705	CIRCLING HGT RELATED TO AD ELEV
122.100	DIST IN NM. ELEV, ALT AND HGT IN FT
SCALE 1:300 000	VAR 8° E (2020)

**ANDØYA
ANDENES
VOR X RWY 14**

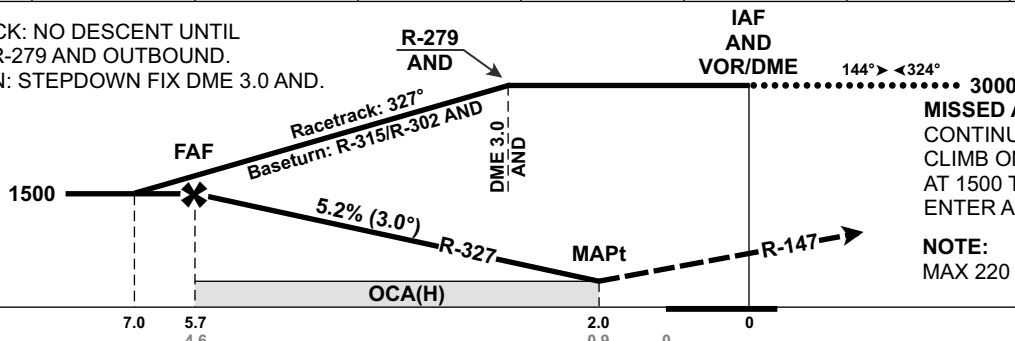
TRANSITION ALTITUDE
7000

ATS AIRSPACE CLASSIFICATION: REF ENR 1.4



DIST TO AND	10	9	8	7	6	5	4	3
ALT (HGT)	-	-	-	-	-	1300 (1271)	980 (951)	670 (641)

RACETRACK: NO DESCENT UNTIL PASSING R-279 AND OUTBOUND.
BASETURN: STEPDOWN FIX DME 3.0 AND.



PROCEDURE OFFSET: 5°

MISSED APPROACH:
CONTINUOUS CLIMBING TO 3000.
CLIMB ON R-147 AND.
AT 1500 TURN LEFT DCT AND.
ENTER AND HLDG CLIMBING TO 3000.

NOTE:
MAX 220 KT IAS IN MISSED APCH TURN.

CAT OF ACFT		A	B	C	D
OCA (H) STRAIGHT- IN		-	-	-	-
		-	-	-	-
CIRCLING		500 (470)	1540 (1510)	1740 (1710)	1930 (1900)

NOTE: NO CIRCLING W OF AD

CHANGES: NEW PROCEDURE.