

AERODROME CHART ICAO	ARP 592244N 0104708E AD ELEV 174	RYGGE, RYGGE NORWAY
---------------------------------------	---	--------------------------------------

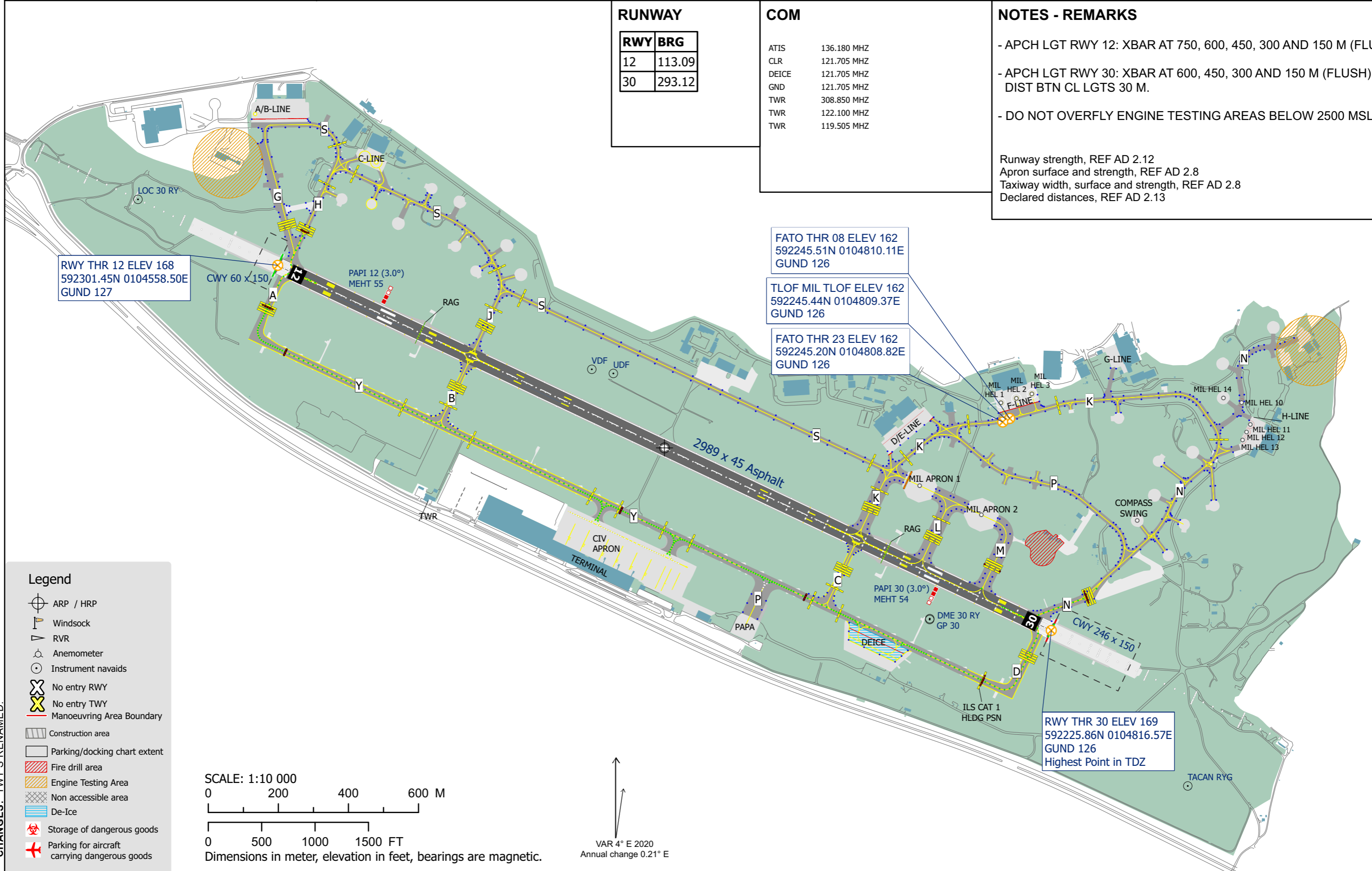
RUNWAY	
RWY	BRG
12	113.09
30	293.12

COM	
ATIS	136.180 MHZ
CLR	121.705 MHZ
DEICE	121.705 MHZ
GND	121.705 MHZ
TWR	308.850 MHZ
TWR	122.100 MHZ
TWR	119.505 MHZ

NOTES - REMARKS

- APCH LGT RWY 12: XBAR AT 750, 600, 450, 300 AND 150 M (FLUSH).
- APCH LGT RWY 30: XBAR AT 600, 450, 300 AND 150 M (FLUSH). DIST BTN CL LGTS 30 M.
- DO NOT OVERFLY ENGINE TESTING AREAS BELOW 2500 MSL.

Runway strength, REF AD 2.12
 Apron surface and strength, REF AD 2.8
 Taxiway width, surface and strength, REF AD 2.8
 Declared distances, REF AD 2.13



RWY THR 12 ELEV 168
 592301.45N 0104558.50E
 GUND 127

FATO THR 08 ELEV 162
 592245.51N 0104810.11E
 GUND 126

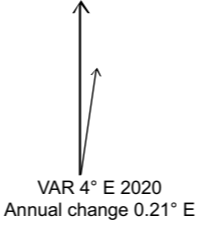
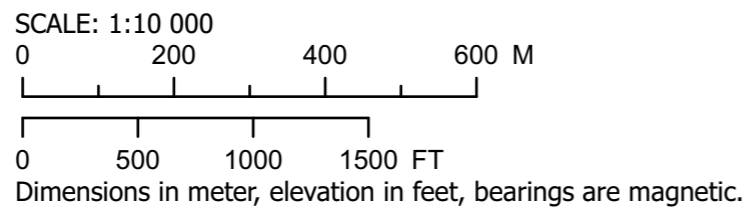
TLOF MIL TLOF ELEV 162
 592245.44N 0104809.37E
 GUND 126

FATO THR 23 ELEV 162
 592245.20N 0104808.82E
 GUND 126

RWY THR 30 ELEV 169
 592225.86N 0104816.57E
 GUND 126
 Highest Point in TDZ

Legend

- ARP / HRP
- Windsock
- RVR
- Anemometer
- Instrument navaid
- No entry RWY
- No entry TWY
- Manoeuvring Area Boundary
- Construction area
- Parking/docking chart extent
- Fire drill area
- Engine Testing Area
- Non accessible area
- De-Ice
- Storage of dangerous goods
- Parking for aircraft carrying dangerous goods



CHANGES: TWY'S RENAMED.