

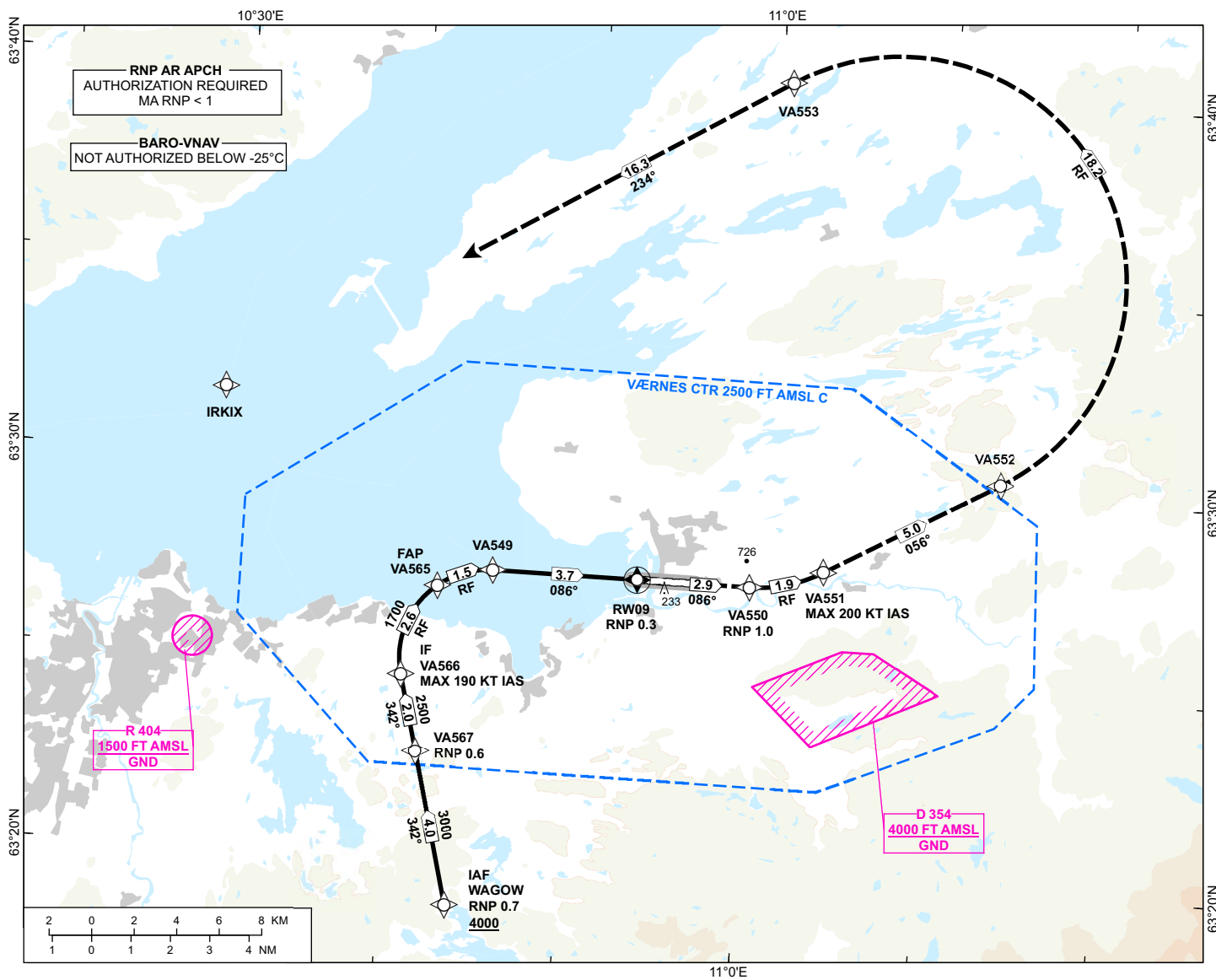
INSTRUMENT APPROACH CHART - ICAO

**TRONDHEIM
VÆRNES**

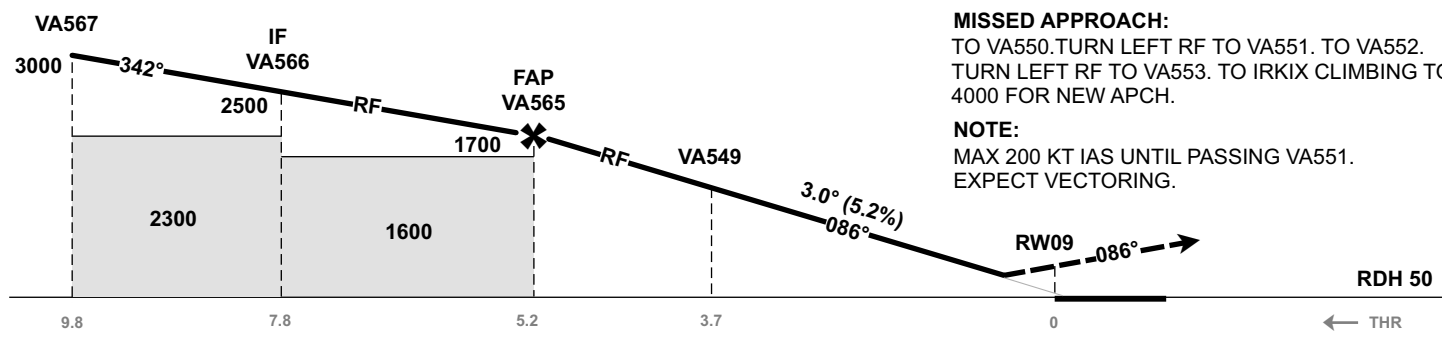
RNP S RWY 09 (AR)

TRANSITION ALTITUDE
7000

| | | |
|----------------------|-------------------------------------|---------------------------------|
| <p>MSA 25 NM ARP</p> | ATIS: 127.555 | AD ELEV: 64 |
| | APP: 118.605 119.155 | THR ELEV: 17 |
| | TWR: 119.405 133.755 | HGT RELATED TO THR 09 |
| | | CIRCLING HGT RELATED TO AD ELEV |
| | DIST IN NM. ELEV, ALT AND HGT IN FT | |
| | SCALE 1:300 000 | VAR 4°E (2020) |



| | | | | | | | | |
|--------------|---|---|---|---|---|---|---|---|
| DIST TO RW09 | 9 | 8 | 7 | 6 | 5 | 4 | 3 | 2 |
| ALT (HGT) | - | - | - | - | - | - | - | - |



MISSED APPROACH:
TO VA550. TURN LEFT RF TO VA551. TO VA552. TURN LEFT RF TO VA553. TO IRKIX CLIMBING TO 4000 FOR NEW APCH.

NOTE:
MAX 200 KT IAS UNTIL PASSING VA551. EXPECT VECTORING.

| CAT OF ACFT | | A | B | C | D |
|-------------------------|-----------------|-----------|-----------|-----------|-----------|
| OCA (H) STRAIGHT- IN | RNP 0.3 (3.1%*) | 423 (406) | 444 (427) | 466 (449) | 485 (468) |
| | RNP 0.3 (4.0%*) | 336 (319) | 359 (342) | 383 (366) | 403 (386) |
| | RNP 0.3 (5.0%*) | 282 (265) | 307 (290) | 332 (315) | 354 (337) |
| CIRCLING** | - | - | - | - | - |

NOTE: *MNM MISSED APCH CLIMB GRADIENT. **CIRCLING NOT AVAILABLE.

CHANGES: RNP AT WAGOW. MODIFIED CTR. EDITORIALS.

ATS AIRSPACE CLASSIFICATION: REF ENR 1.4