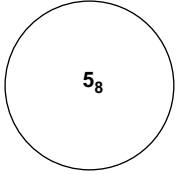


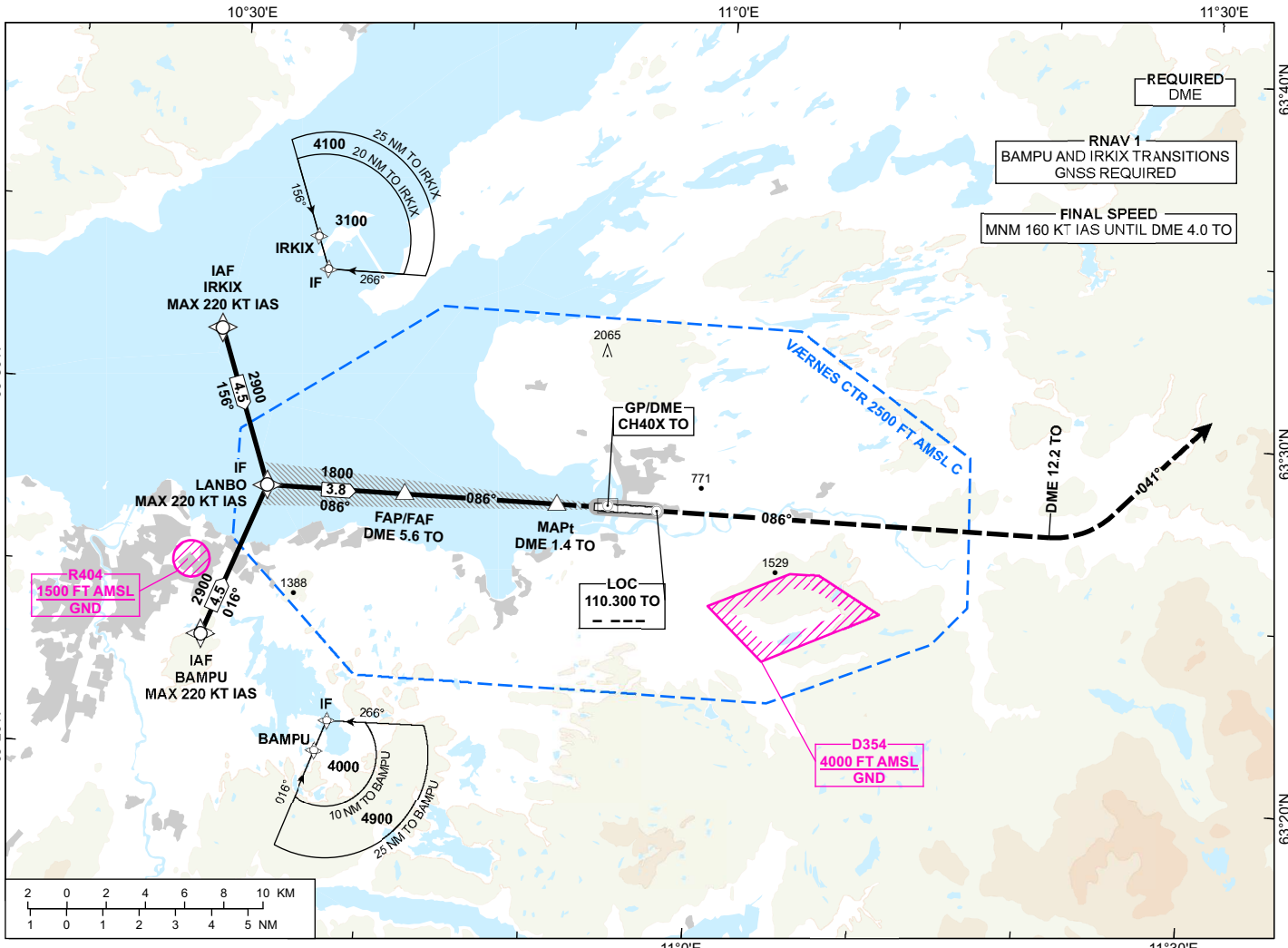
INSTRUMENT APPROACH CHART - ICAO

**TRONDHEIM
VÆRNES**

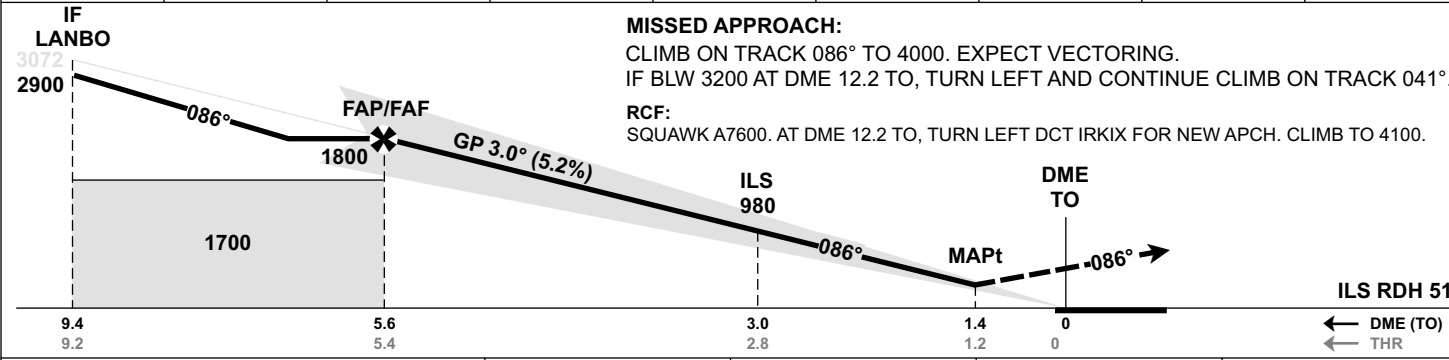
ILS or LOC RWY 09

TRANSITION ALTITUDE
7000

 <p>MSA 25 NM ARP</p>	ATIS: 127.555	AD ELEV: 64
	APP: 118.605 119.155	THR ELEV: 17
	TWR: 119.405 133.755	HGT RELATED TO THR 09
		CIRCLING HGT RELATED TO AD ELEV
	DIST IN NM. ELEV, ALT AND HGT IN FT	
	SCALE 1:350 000	VAR 4°E (2020)



DIST TO TO	9	8	7	6	5	4	3	2
ALT (HGT)	-	-	-	-	1620 (1602)	1300 (1282)	980 (962)	660 (642)



MISSED APPROACH:
CLIMB ON TRACK 086° TO 4000. EXPECT VECTORING.
IF BLW 3200 AT DME 12.2 TO, TURN LEFT AND CONTINUE CLIMB ON TRACK 041°.
RCF:
SQUAWK A7600. AT DME 12.2 TO, TURN LEFT DCT IRKIX FOR NEW APCH. CLIMB TO 4100.

CAT OF ACFT		A	B	C	D
OCA (H) STRAIGHT- IN	CAT I 2.5%*	721 (704)	734 (717)	742 (725)	752 (735)
	CAT I 3.0%*	544 (527)	557 (540)	565 (548)	575 (558)
	CAT I 4.0%*	308 (291)	320 (303)	328 (311)	338 (321)
	CAT I 5.0%*	214 (197)	227 (210)	235 (218)	245 (228)
	LOC 2.5%*	720 (703)	740 (723)	770 (753)	790 (773)
	LOC 3.0%*	560 (543)	590 (573)	610 (593)	640 (623)
	LOC 4.0%*	460 (443)			
CIRCLING	1240 (1176)	1430 (1366)	2140 (2076)		

NOTE: CIRCLING S OF AD ONLY. *MNM MISSED APCH CLIMB GRADIENT.

CHANGES: VÆRNES CTR, EDITORIALS.

ATS AIRSPACE CLASSIFICATION: REF ENR 1.4