

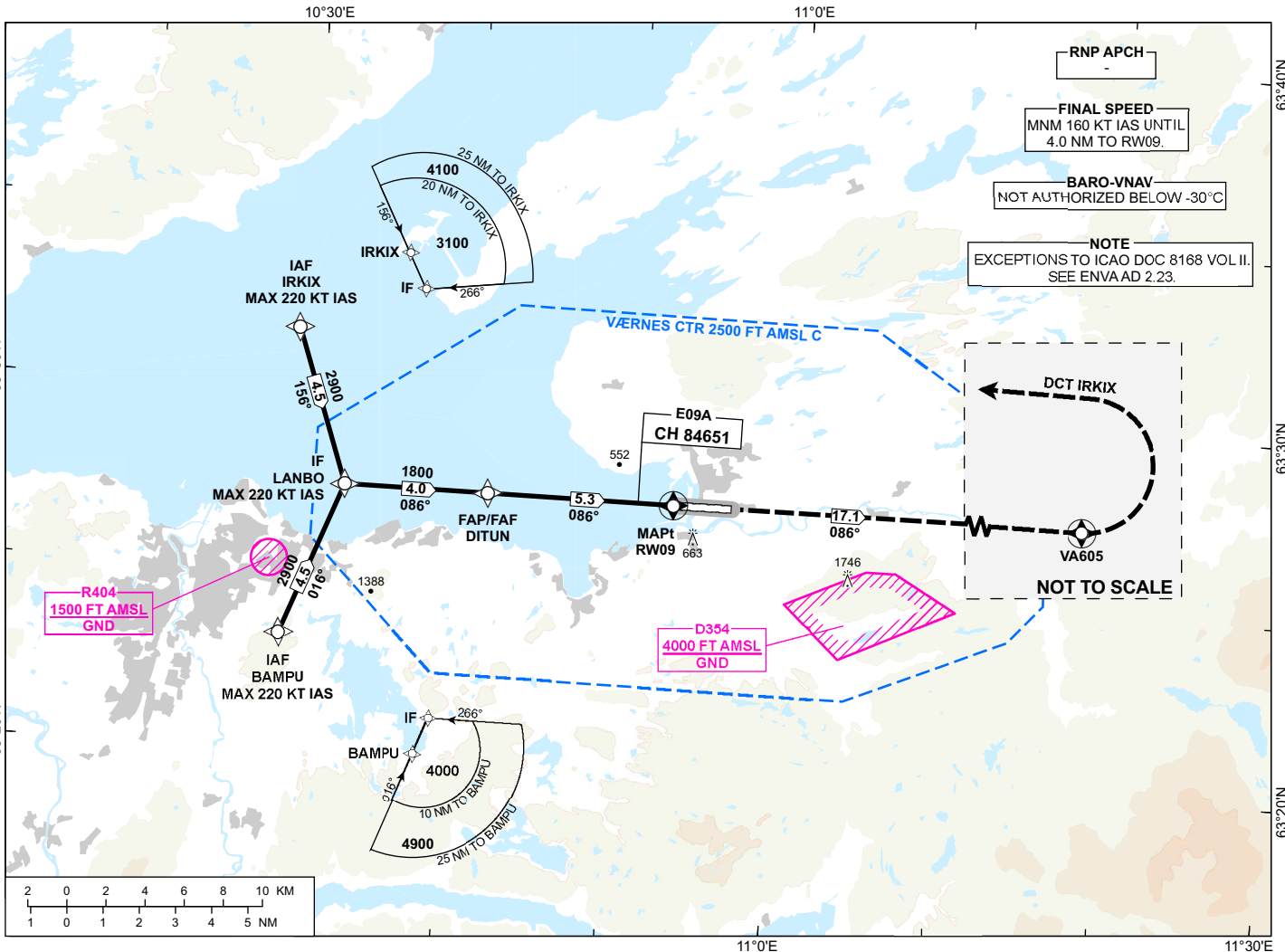
**INSTRUMENT APPROACH CHART - ICAO**

**TRONDHEIM  
VÆRNES**

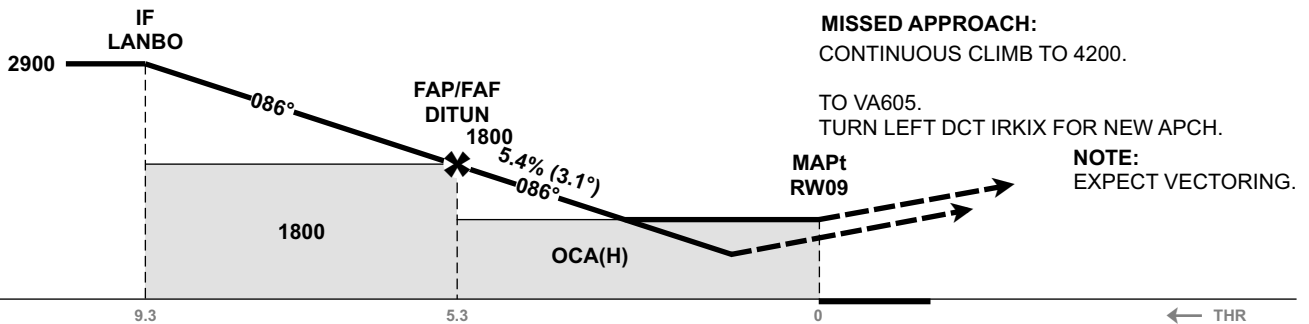
**RNP Z RWY 09**

ATIS: 127.555	AD ELEV: 64
APP: 118.605 119.155	THR ELEV: 17
TWR: 119.405 133.755	HGT RELATED TO THR 09
	CIRCLING HGT RELATED TO AD ELEV
	DIST IN NM. ELEV, ALT AND HGT IN FT
SCALE 1:350 000	VAR 4°E (2020)

TRANSITION ALTITUDE  
7000



DIST TO RWY09	9	8	7	6	5	4	3	2
ALT (HGT)	-	-	-	-	1720 (1703)	1390 (1373)	1060 (1043)	730 (713)



**MISSED APPROACH:**  
CONTINUOUS CLIMB TO 4200.  
TO VA605.  
TURN LEFT DCT IRKIX FOR NEW APCH.  
**NOTE:**  
EXPECT VECTORING.

CAT OF ACFT		A	B	C	D
OCA (H) STRAIGHT- IN	LPV 2.5%*	722 (705)	735 (718)	743 (726)	753 (736)
	LPV 4.0%*	301 (284)	314 (297)	322 (305)	332 (315)
	LNAV/VNAV 2.5%*	830 (813)	840 (823)	860 (843)	880 (863)
	LNAV/VNAV 3.3%*	700 (683)			
	LNAV 2.5%*	1150 (1133)	1170 (1153)	1190 (1173)	1210 (1193)
	LNAV 3.5%*	900 (883)	930 (913)	960 (943)	990 (973)
	LNAV 4.5%*	720 (703)		760 (743)	790 (773)
CIRCLING	1240 (1176)	1430 (1366)	2140 (2076)		

**NOTE:** CIRCLING S OF AD ONLY. \*MNM MISSED APCH CLIMB GRADIENT.

CHANGES: VÆRNES CTR, EDITORIALS.

ATS AIRSPACE CLASSIFICATION: REF ENR 1.4