

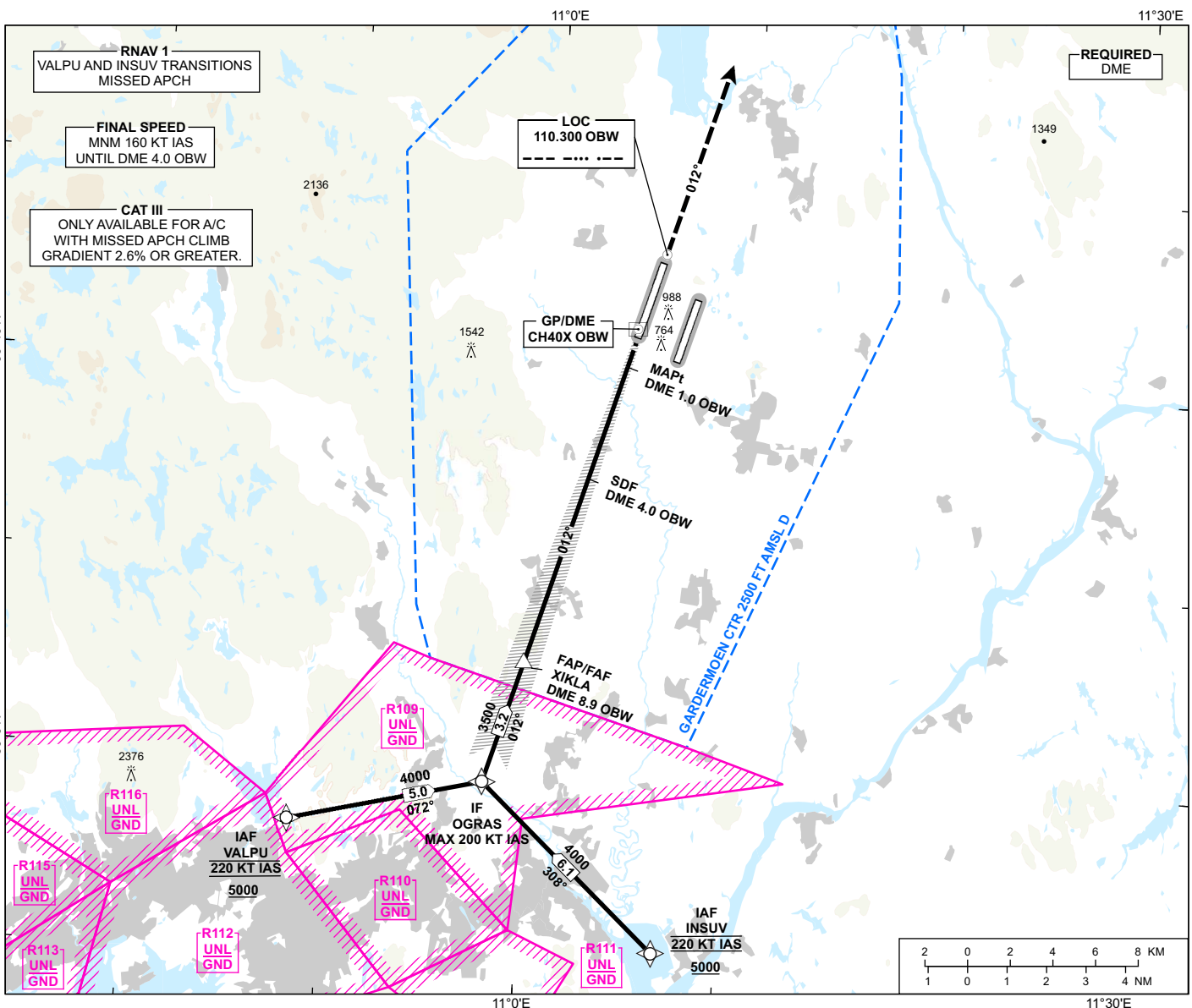
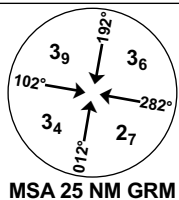
INSTRUMENT APPROACH CHART - ICAO

OSLO GARDERMOEN

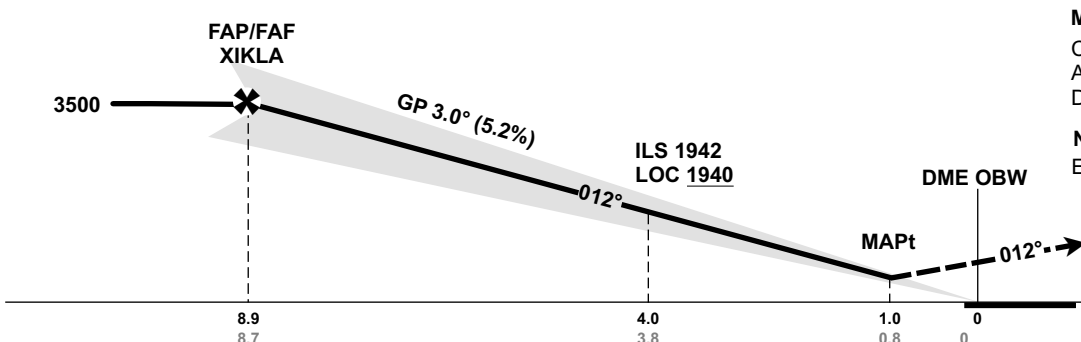
ILS Y or LOC Y RWY 01L CAT II & III

TRANSITION ALTITUDE
7000

ATIS: 126.130	AD ELEV: 682
APP: 118.480 120.455	THR ELEV: 657
DIR: 136.405 (119.980)	HGT RELATED TO THR 01L
FIN: 128.905	CIRCLING HGT RELATED TO AD ELEV
TWR: 118.305 (118.705)	DIST IN NM. ELEV, ALT AND HGT IN FT
GND: 121.605	SCALE 1:300 000
	VAR 4° E (2020)



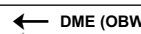
DIST TO OBW	9	8	7	6	5	4	3	2
ALT (HGT)	-	3210 (2553)	2890 (2233)	2570 (1913)	2250 (1593)	1940 (1283)	1620 (963)	1300 (643)



MISSED APPROACH:
CLIMB ON TRACK 012° TO 5000.
AT DME 20.0 OBW, TURN LEFT
DCT VALPU FOR NEW APCH.

NOTE:
EXPECT VECTORING BY OSLO APP.

ILS RDH 54



CAT OF ACFT		A	B	C	D
OCA (H) STRAIGHT- IN	CAT I	824 (167)	834 (177)	844 (187)	854 (197)
	CAT II	(79)	(95)	(109)	(122)
	LOC	980 (323)			
CIRCLING		1280 (598)		1920 (1238)	2230 (1548)

NOTE: CIRCLING W OF RWY ONLY.

CHANGES: PROCEDURE NAME, MISSED APCH, EDITORIALS.

ATS AIRSPACE CLASSIFICATION: REF ENR 1.4