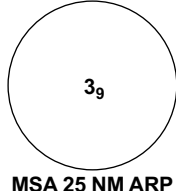
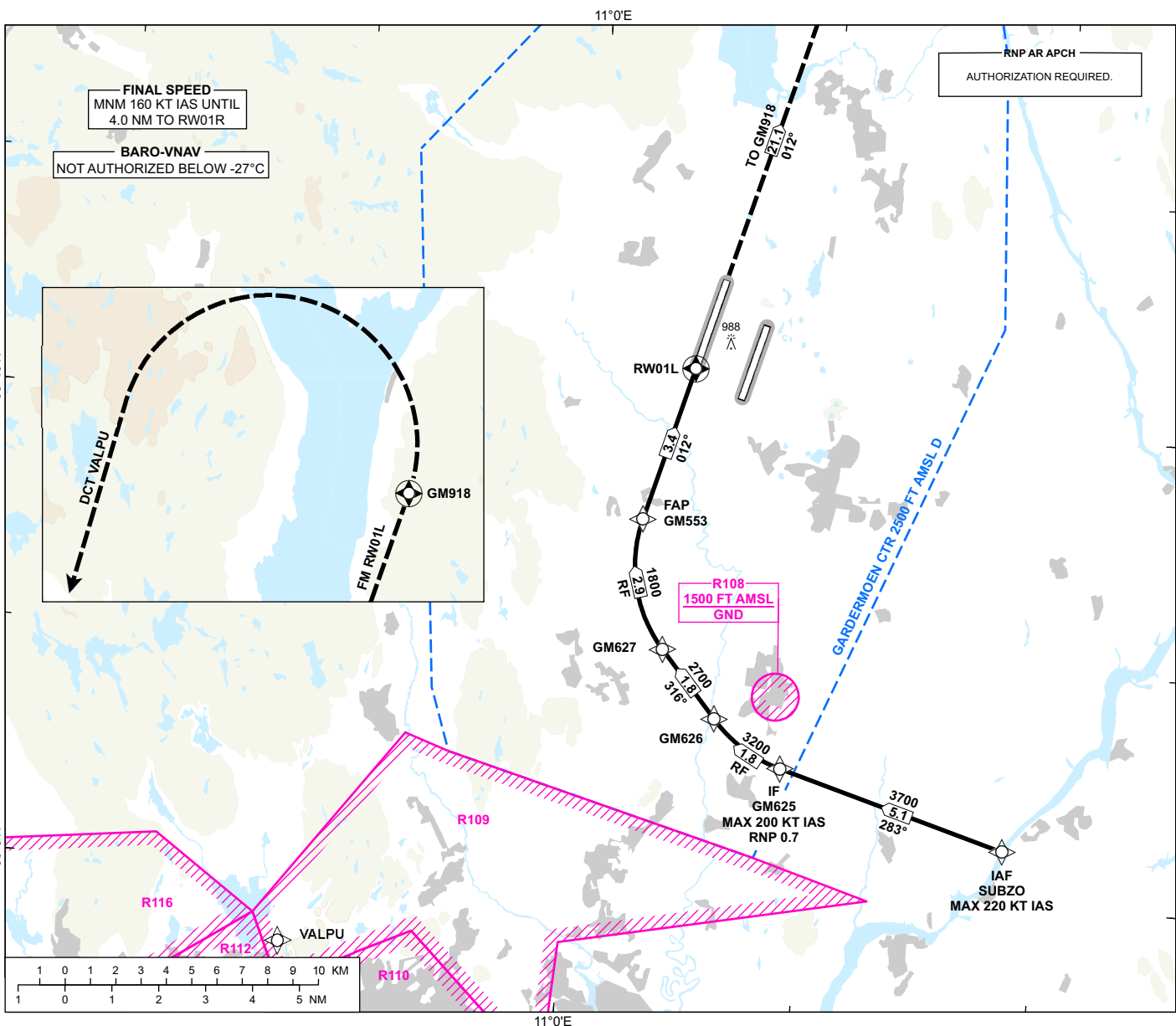


INSTRUMENT APPROACH CHART - ICAO

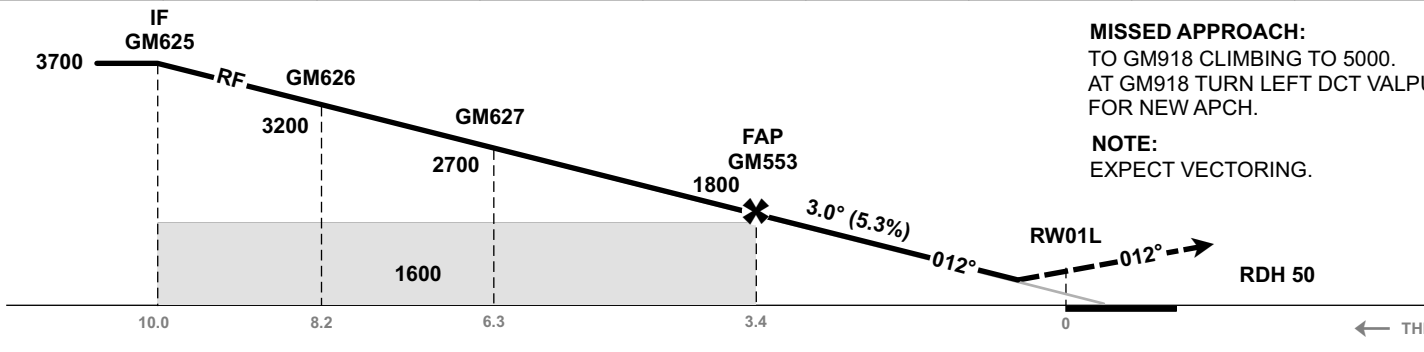
**OSLO
GARDERMOEN
RNP E RWY 01L (AR)**

 <p>MSA 25 NM ARP</p>	ATIS: 126.130	AD ELEV: 682
	APP: 118.480 120.455	THR ELEV: 657
	DIR: 136.405 (119.980)	HGT RELATED TO THR 01L
	FIN: 128.905	CIRCLING HGT RELATED TO AD ELEV
	TWR: 118.305 (118.705)	DIST IN NM. ELEV, ALT AND HGT IN FT
	GND: 121.605	SCALE 1:250 000 VAR 4°E (2020)

TRANSITION ALTITUDE
7000



DIST TO RWY 01L	8	7	6	5	4	3	2	1
ALT (HGT)	-	-	-	-	-	-	-	-



MISSED APPROACH:
TO GM918 CLIMBING TO 5000.
AT GM918 TURN LEFT DCT VALPU
FOR NEW APCH.

NOTE:
EXPECT VECTORING.

CAT OF ACFT		A	B	C	D
OCA (H) STRAIGHT-IN	RNP 0.3 (2.5%*)	1087 (430)			
	RNP 0.3 (5.0%*)	983 (326)	1009 (352)	1032 (375)	1055 (398)
CIRCLING		1280 (598)		1920 (1238)	2230 (1548)

NOTE: CIRCLING W OF RWY ONLY. *MNM MISSED APCH CLIMB GRADIENT.

CHANGES: MISSED APCH, EDITORIALS.

ATS AIRSPACE CLASSIFICATION: REF ENR 1.4