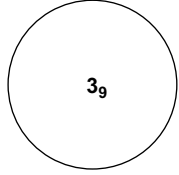


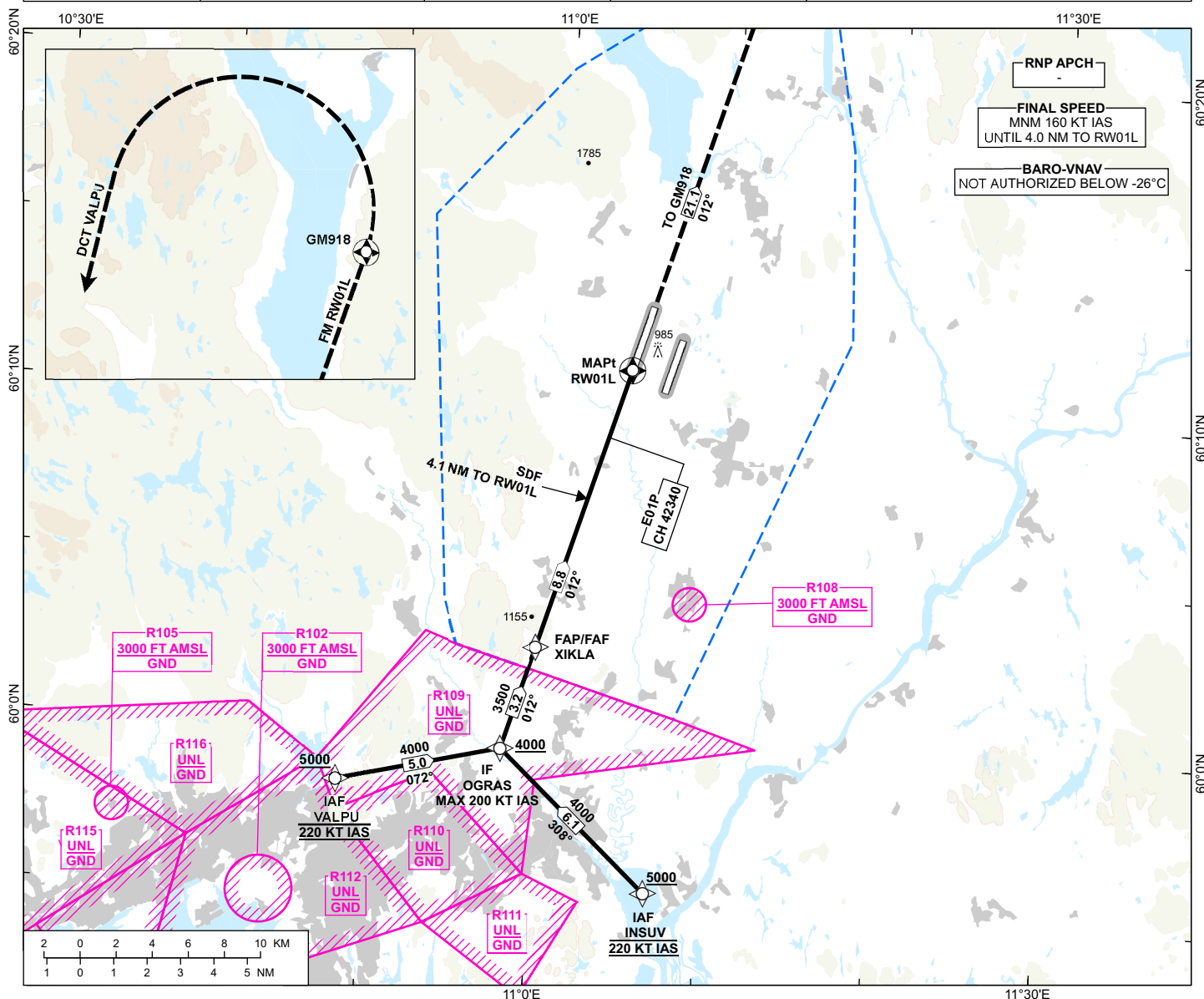
INSTRUMENT APPROACH CHART - ICAO

OSLO GARDERMOEN

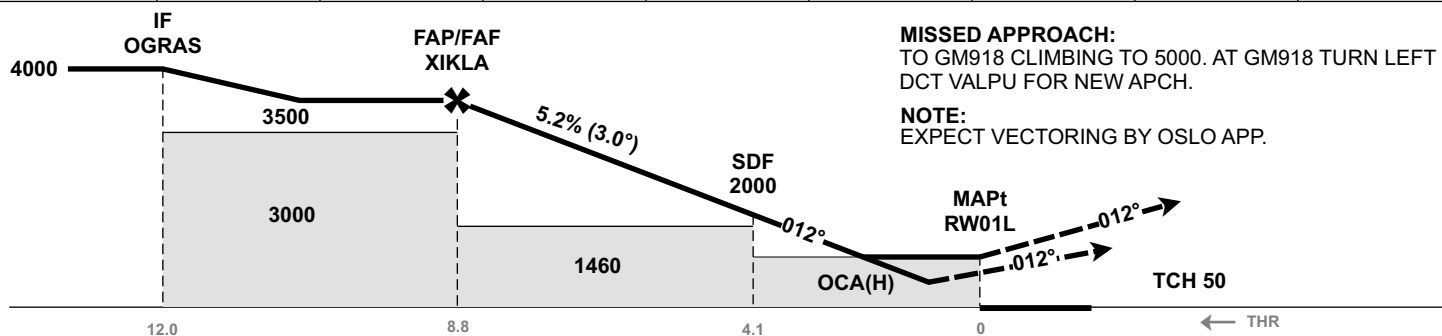
RNP Z RWY 01L

TRANSITION ALTITUDE
7000

 <p>MSA 25 NM ARP</p>	ATIS: 126.130	AD ELEV: 682
	APP: 118.480 120.455	THR ELEV: 657
	DIR: 136.405 (119.980)	HGT RELATED TO THR 01L
	FIN: 128.905	CIRCLING HGT RELATED TO AD ELEV
	TWR: 118.305 (118.705)	DIST IN NM. ELEV, ALT AND HGT IN FT
	GND: 121.605	SCALE 1:350 000



DIST TO RW01L	9	8	7	6	5	4	3	2
ALT (HGT)	-	3260 (2603)	2940 (2283)	2620 (1963)	2300 (1643)	1980 (1323)	1670 (1013)	1350 (693)



CAT OF ACFT		A	B	C	D
OCA (H) STRAIGHT- IN	LPV	824 (167)	862 (191)	844 (187)	853 (196)
	LNAV/VNAV	1000 (343)	990 (319)	1030 (373)	1150 (493)
	LNAV	1240 (583)			
CIRCLING		1280 (598)		1920 (1238)	2230 (1548)

NOTE: CIRCLING W OF RWY ONLY.

ATS AIRSPACE CLASSIFICATION: REF ENR 1.4

CHANGES: MISSED APCH, EDITORIALS.