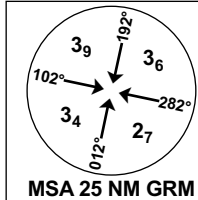


**INSTRUMENT APPROACH CHART - ICAO**

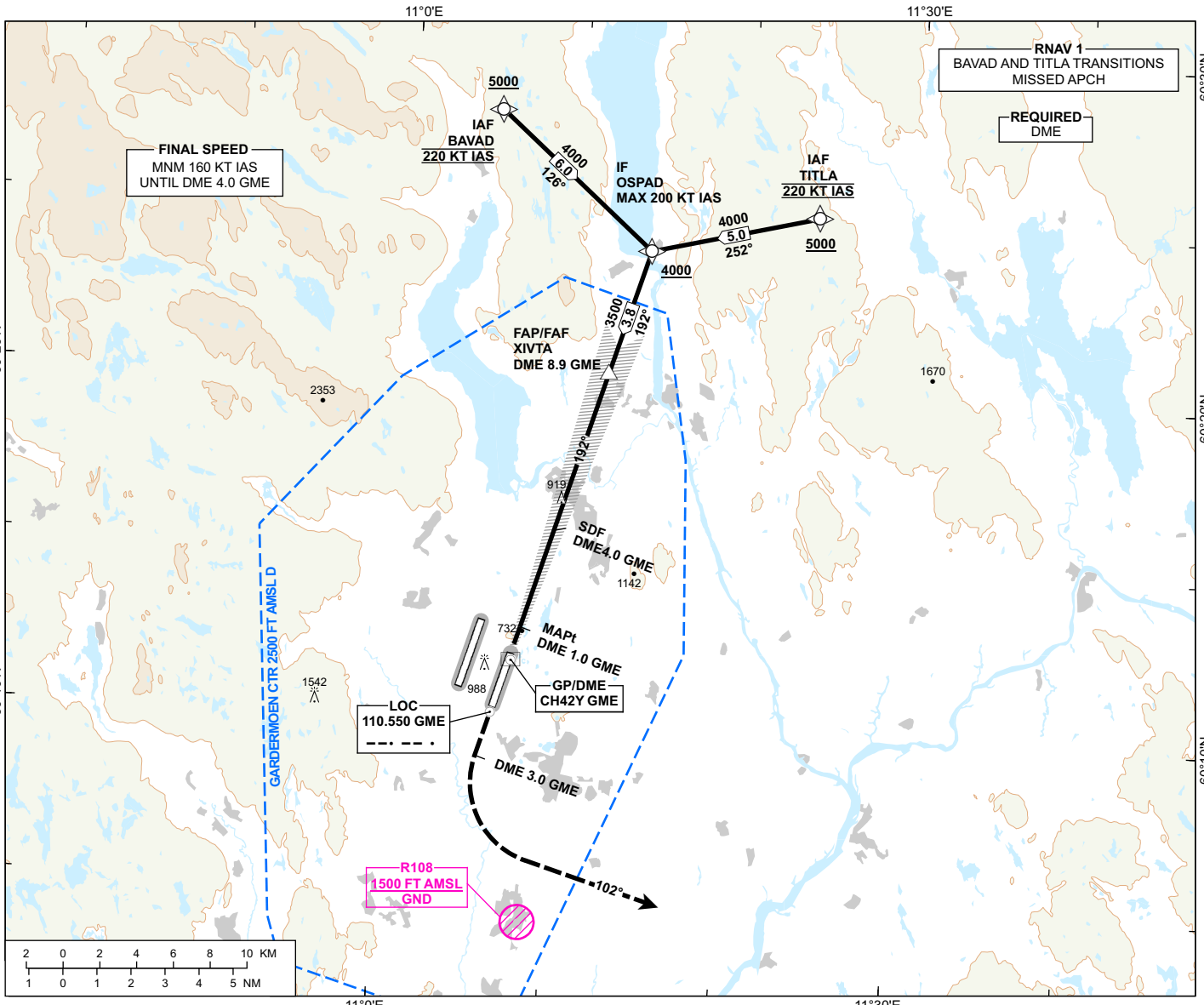
**OSLO  
GARDERMOEN**

**ILS Y or LOC Y RWY 19L CAT II & III**

**TRANSITION ALTITUDE  
7000**



ATIS: 126.130	AD ELEV: 682
APP: 118.480 120.455	THR ELEV: 682
DIR: 136.405 (119.980)	HGT RELATED TO THR 19L
FIN: 128.905	CIRCLING HGT RELATED TO AD ELEV
TWR: 120.105 (123.330)	DIST IN NM. ELEV, ALT AND HGT IN FT
GND: 121.905	SCALE 1:350 000 VAR 4° E (2020)



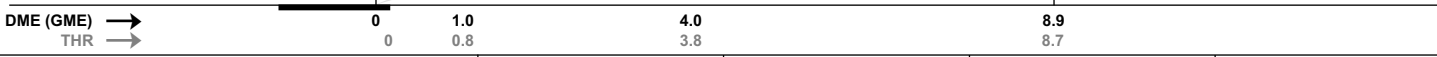
DIST TO GME	8	7	6	5	4	3	2	1
ALT (HGT)	3230 (2548)	2910 (2228)	2590 (1908)	2270 (1588)	1950 (1268)	1640 (958)	1320 (638)	1000 (318)

**MISSED APPROACH:**

CLIMB TO 3000 ON RWY TRACK 192°. AT DME 3.0 GME, TURN LEFT TO TRACK 102°. AT DME 13.5 GME, CLIMB TO 5000. AT DME 20.0 GME, TURN LEFT DCT TITLA. MAKE NEW APCH.

NOTE:  
EXPECT VECTORING BY OSLO APP.

ILS RDH 50



CAT OF ACFT		A	B	C	D
OCA (H) STRAIGHT- IN	CAT I	819 (137)	827 (145)	842 (160)	858 (176)
	CAT II	(49)	(59)	(72)	(85)
	LOC	1030 (348)			
CIRCLING		1280 (598)	1530 (848)	1630 (948)	

NOTE: CIRCLING E OF RWY ONLY.

CHANGES: PROCEDURE NAME, MISSED APCH, EDITORIALS.

ATS AIRSPACE CLASSIFICATION: REF ENR 1.4