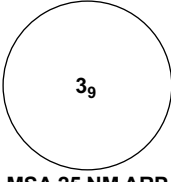


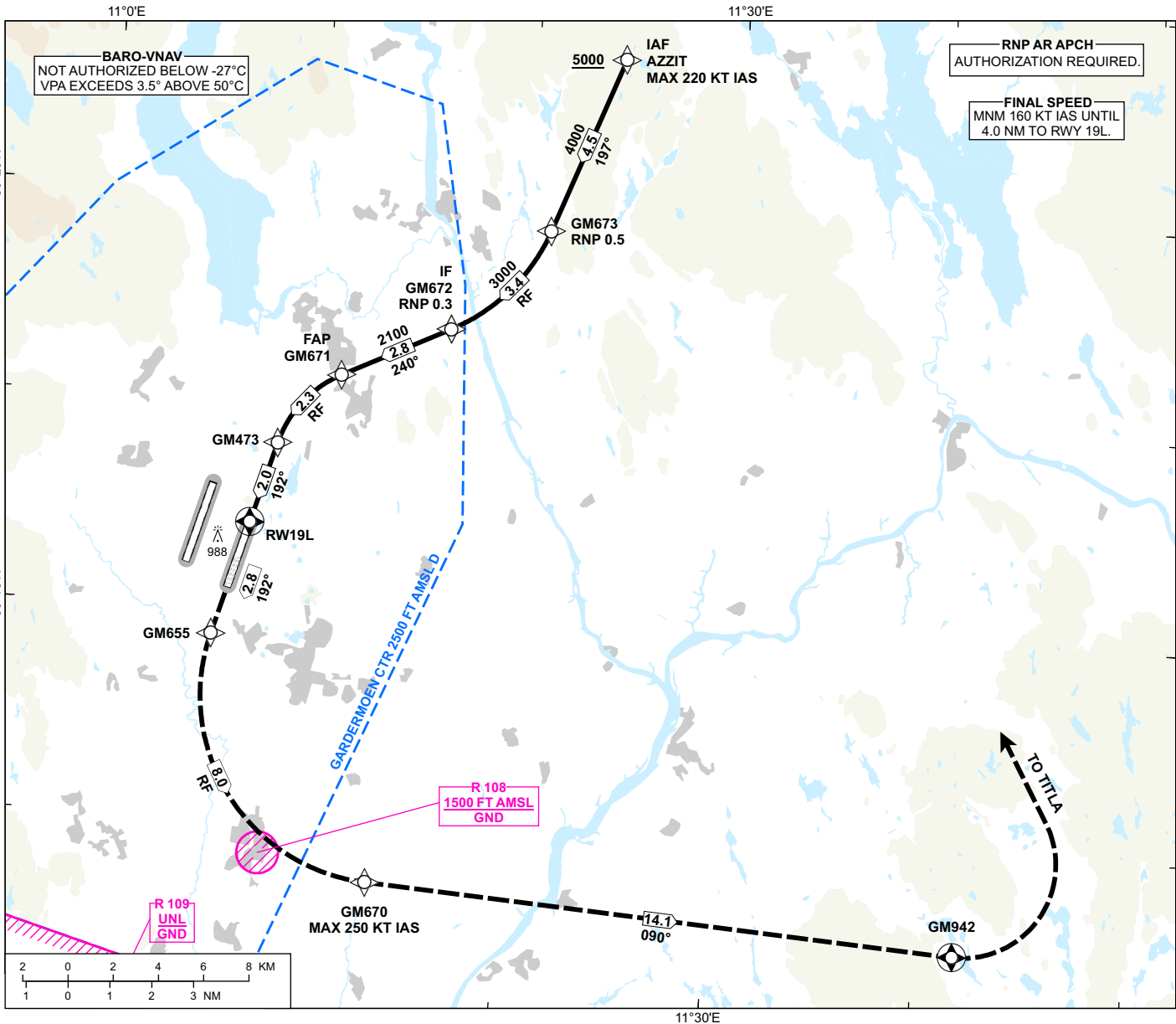
**INSTRUMENT APPROACH CHART - ICAO**

**OSLO  
GARDERMOEN**

**RNP N RWY 19L (AR)**

TRANSITION ALTITUDE  
7000

 <p>MSA 25 NM ARP</p>	ATIS: 126.130	AD ELEV: 682
	APP: 118.480 120.455	THR ELEV: 682
	DIR: 136.405 (119.980)	HGT RELATED TO THR 19L
	FIN: 128.905	CIRCLING HGT RELATED TO AD ELEV
	TWR: 120.105 (123.330)	DIST IN NM. ELEV, ALT AND HGT IN FT
GND: 121.905	SCALE 1:280 000	VAR 4°E (2020)



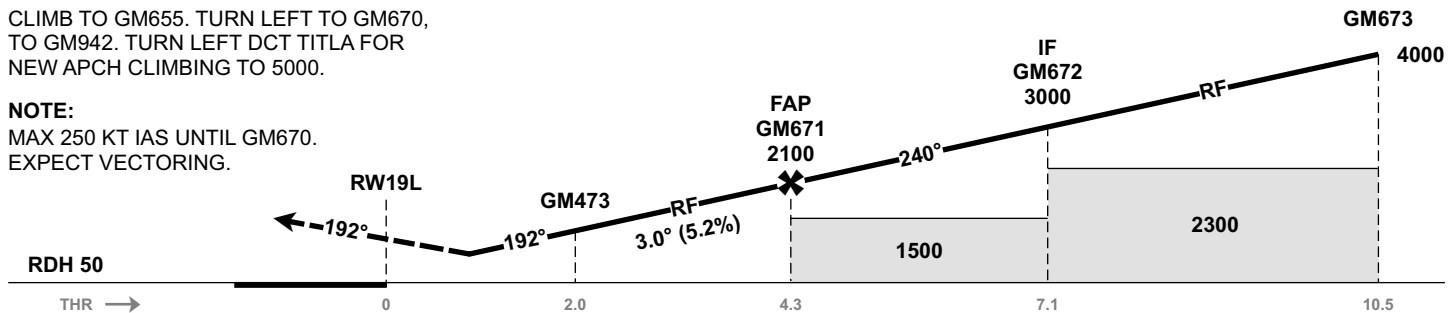
DIST TO RWY19L	9	8	7	6	5	4	3	2
ALT (HGT)	-	-	-	-	-	-	-	-

**MISSED APPROACH:**

CLIMB TO GM655. TURN LEFT TO GM670, TO GM942. TURN LEFT DCT TITLA FOR NEW APCH CLIMBING TO 5000.

**NOTE:**

MAX 250 KT IAS UNTIL GM670. EXPECT VECTORING.



CAT OF ACFT		A	B	C	D
OCA (H) STRAIGHT-IN	RNP 0.3 (2.5%*)	1033 (351)	1054 (372)	1072 (390)	1091 (409)
	RNP 0.3 (5.0%*)	988 (306)	1015 (333)	1038 (356)	1061 (379)
CIRCLING		1280 (598)		1530 (848)	1630 (948)

NOTE: CIRCLING E OF AD ONLY. \*MNM MISSED APCH CLIMB GRADIENT.

ATS AIRSPACE CLASSIFICATION: REF ENR 1.4