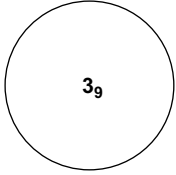


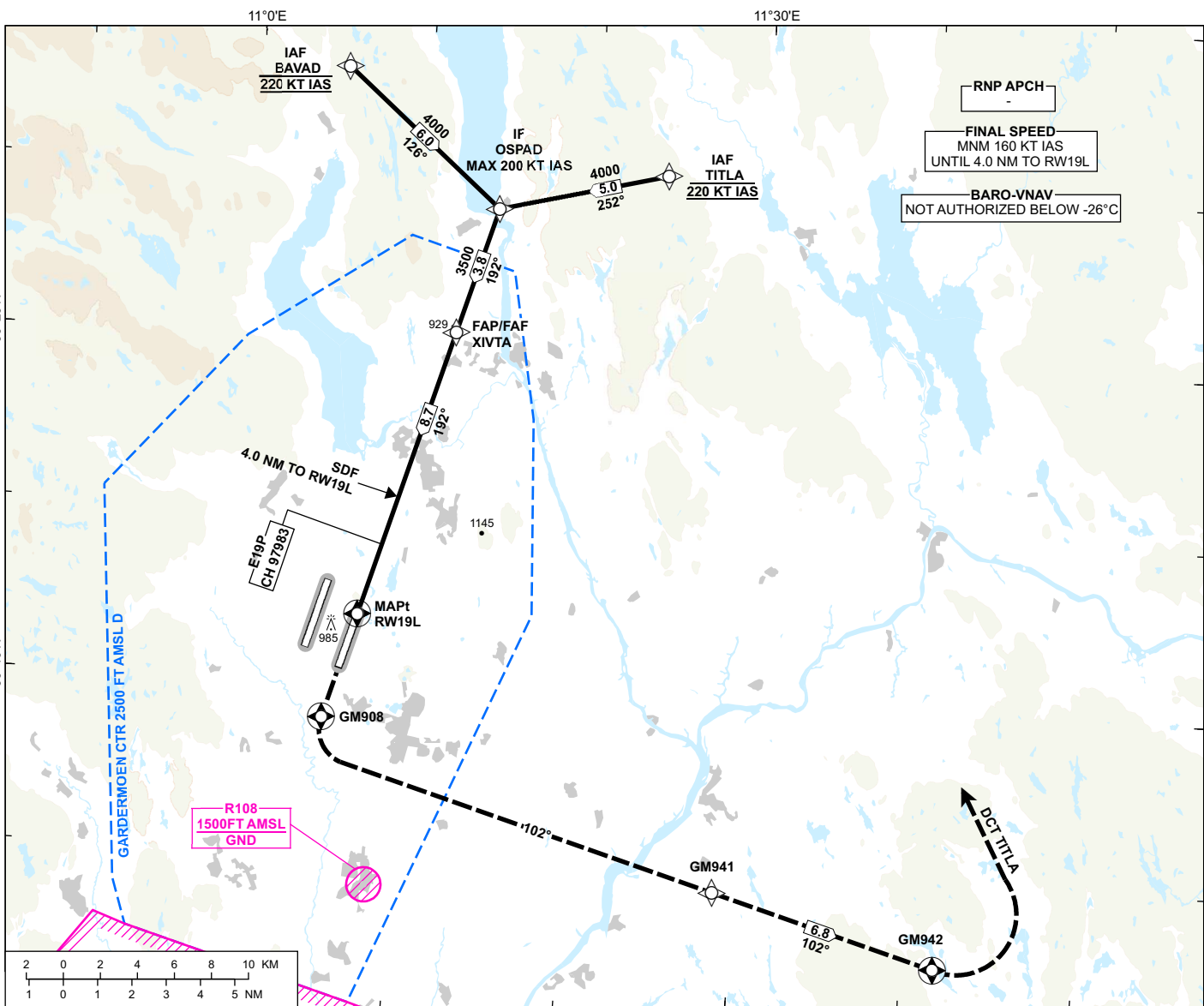
INSTRUMENT APPROACH CHART - ICAO

**OSLO
GARDERMOEN**

RNP Z RWY 19L

TRANSITION ALTITUDE
7000

 <p>MSA 25 NM ARP</p>	ATIS: 126.130	AD ELEV: 682
	APP: 118.480 120.455	THR ELEV: 682
	DIR: 136.405 119.980	HGT RELATED TO THR 19L
	FIN: 128.905	CIRCLING HGT RELATED TO AD ELEV
	TWR: 120.105 123.330	DIST IN NM. ELEV, ALT AND HGT IN FT
	GND: 121.905	SCALE 1:350 000 VAR 4°E (2020)



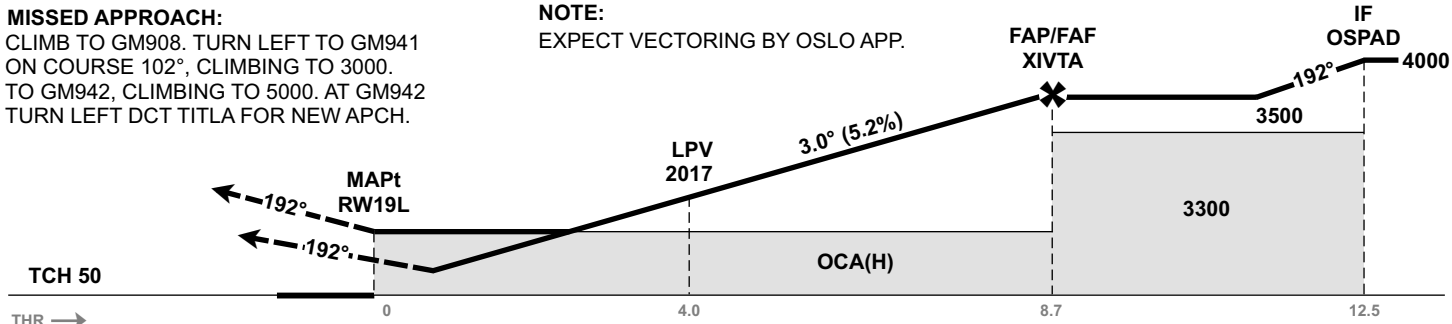
DIST TO RW19L	9	8	7	6	5	4	3	2
ALT (HGT)	3280 (2598)	2970 (2288)	2970 (2288)	2650 (1968)	2330 (1648)	2010 (1328)	1690 (1008)	1370 (688)

MISSED APPROACH:

CLIMB TO GM908. TURN LEFT TO GM941 ON COURSE 102°, CLIMBING TO 3000. TO GM942, CLIMBING TO 5000. AT GM942 TURN LEFT DCT TITLA FOR NEW APCH.

NOTE:

EXPECT VECTORING BY OSLO APP.



CAT OF ACFT		A	B	C	D
OCA (H) STRAIGHT- IN	LPV	821 (139)	829 (147)	839 (157)	850 (168)
	LNAV/VNAV	1000 (318)	1010 (328)	1030 (348)	1150 (468)
	LNAV	1230 (559)			
CIRCLING	1280 (598)		1530 (848)	1630 (948)	

NOTE: CIRCLING E OF RWY ONLY

ATS AIRSPACE CLASSIFICATION: REF ENR 1.4

CHANGES: MISSED APCH, EDITORIALS.