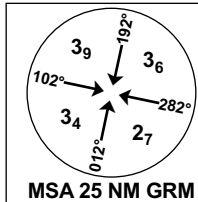


**INSTRUMENT APPROACH CHART - ICAO**

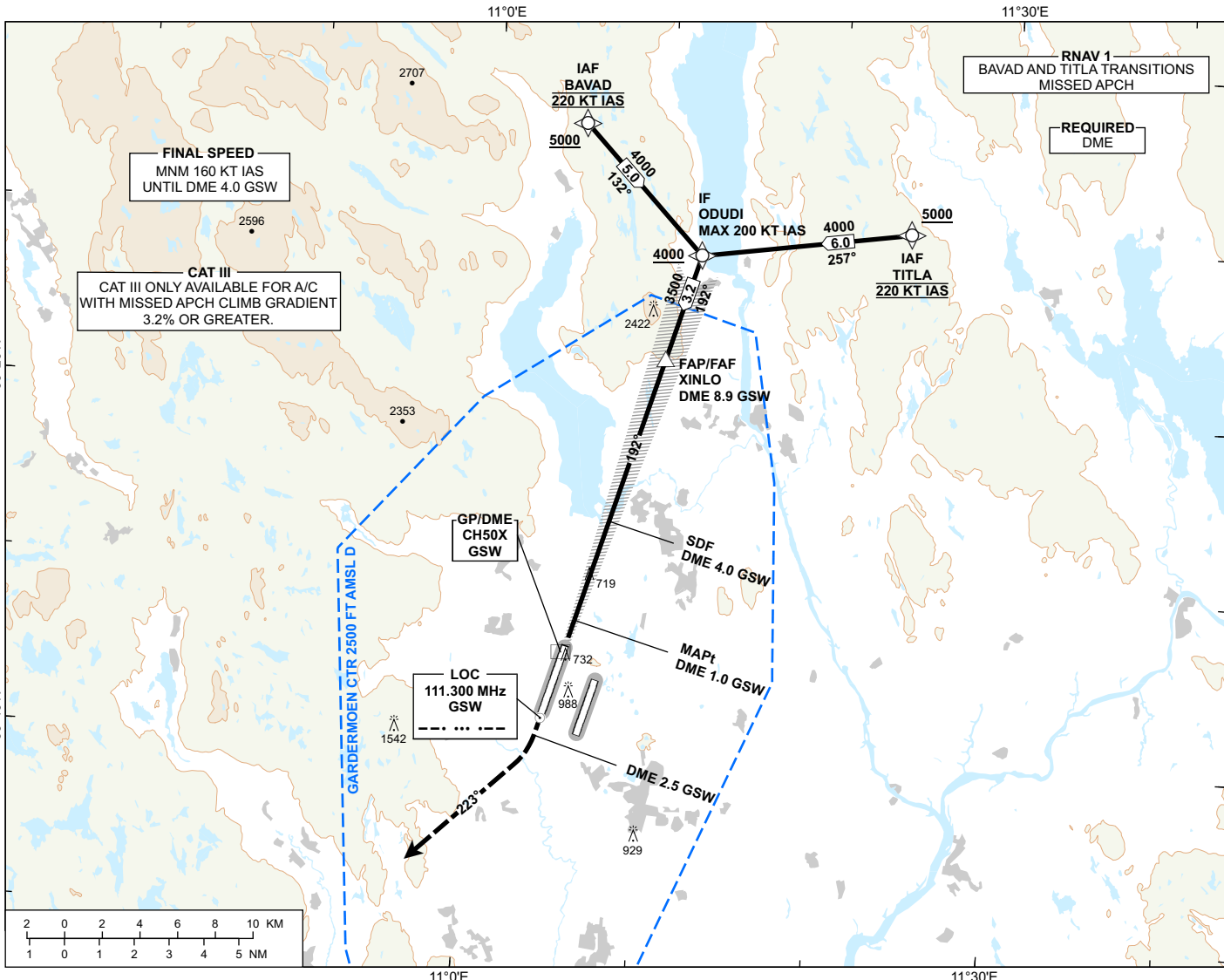
**OSLO GARDERMOEN**

**ILS Y or LOC Y RWY 19R CAT II & III**



ATIS: 126.130	AD ELEV: 682
APP: 118.480 120.455	THR ELEV: 676
DIR: 136.405 (119.980)	HGT RELATED TO THR 19R
FIN: 128.905	CIRCLING HGT RELATED TO AD ELEV
TWR: 118.305 (118.705)	DIST IN NM. ELEV, ALT AND HGT IN FT
GND: 121.605	SCALE 1:350 000 VAR 4° E (2020)

TRANSITION ALTITUDE  
**7000**

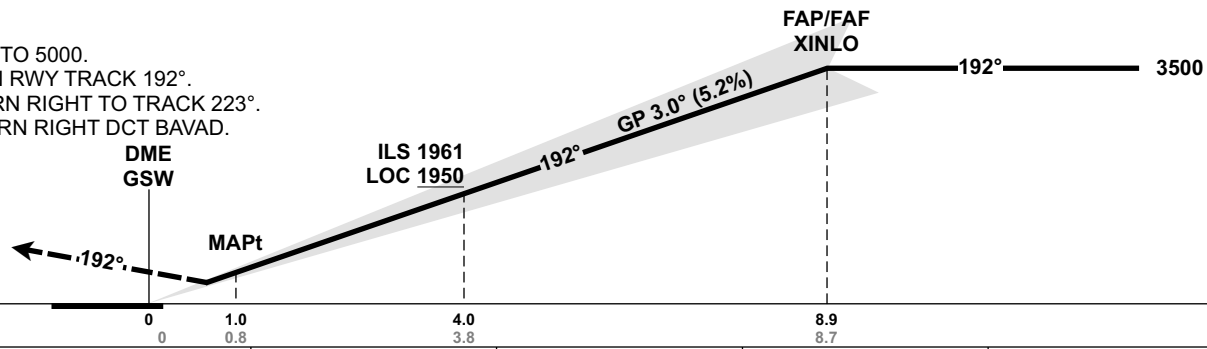


DIST TO GSW	8	7	6	5	4	3	2	1
ALT (HGT)	3230 (2554)	2910 (2234)	2590 (1914)	2270 (1594)	1950 (1274)	1630 (954)	1320 (644)	1000 (324)

**MISSED APPROACH:**  
CONTINUOUS CLIMB TO 5000.  
STRAIGHT AHEAD ON RWY TRACK 192°.  
AT DME 2.5 GSW, TURN RIGHT TO TRACK 223°.  
AT DME 20.0 GSW TURN RIGHT DCT BAVAD.  
MAKE NEW APCH.

NOTE:  
EXPECT VECTORING BY  
OSLO APP.

**ILS RDH 50**



DME (GSW) →		0	1.0	4.0	8.9	
THR →		0	0.8	3.8	8.7	
OCA (H) STRAIGHT-IN	CAT OF ACFT	A	B	C	D	
	CAT I 2.5%*	943 (267)	953 (277)	963 (287)	973 (297)	
	CAT I 3.1%*	824 (148)	834 (158)	843 (167)	853 (177)	
	CAT II 2.5%*	(179)	(195)	(208)	(222)	
	CAT II 3.1%*	(60)	(76)	(88)	(102)	
CIRCLING	LOC	1020 (344)		1280 (598)	1920 (1238)	2230 (1548)

NOTE: CIRCLING W OF RWY ONLY. \*MNM MISSED APCH CLIMB GRADIENT.

CHANGES: PROCEDURE NAME, MISSED APCH, EDITORIALS.

ATS AIRSPACE CLASSIFICATION: REF ENR 1.4