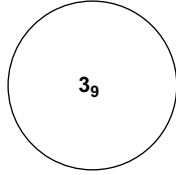


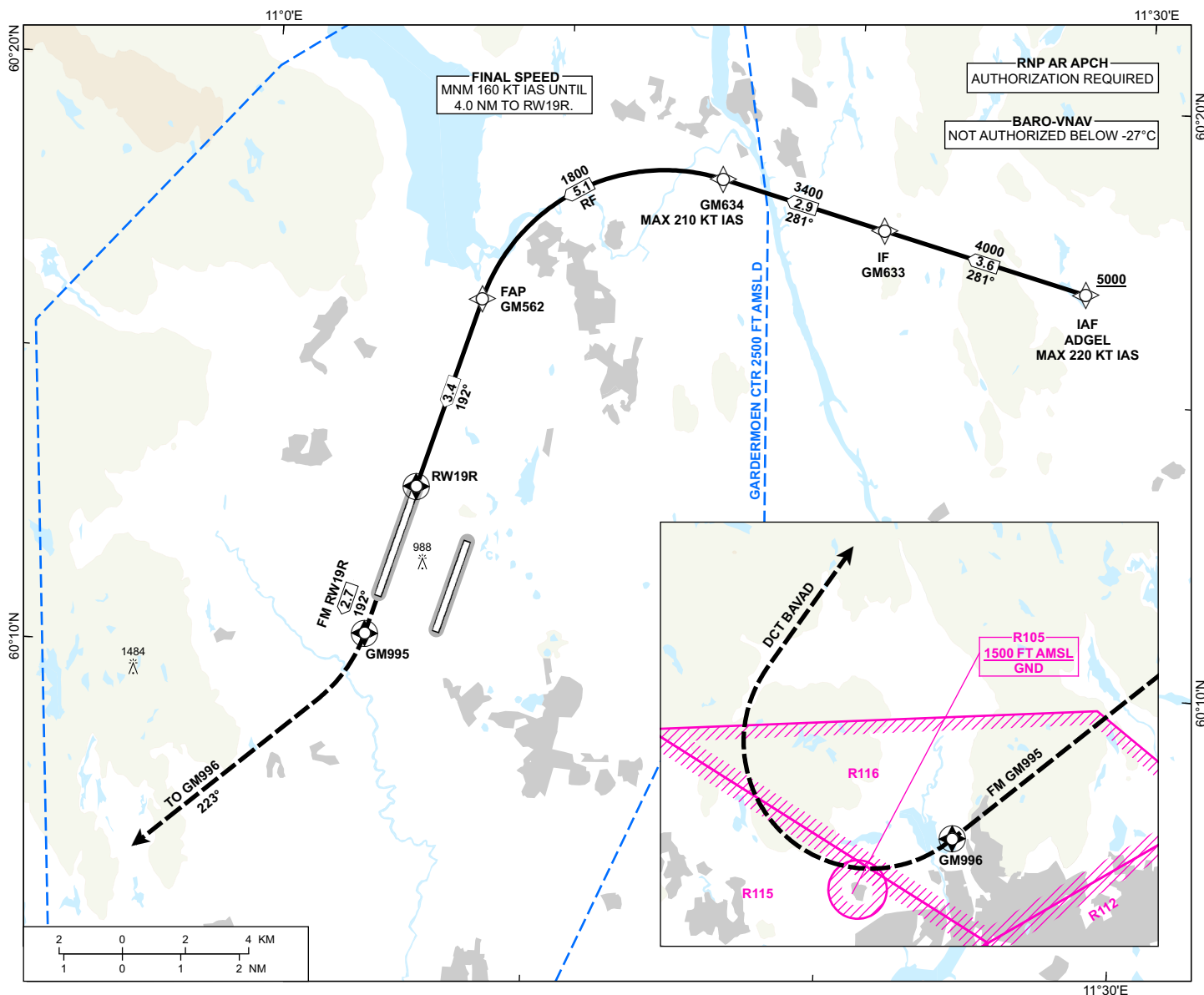
INSTRUMENT APPROACH CHART - ICAO

OSLO GARDERMOEN RNP E RWY 19R (AR)

 <p>MSA 25 NM ARP</p>	ATIS: 126.130	AD ELEV: 682
	APP: 118.480 120.455	THR ELEV: 676
	DIR: 136.405 119.980	HGT RELATED TO THR 19R
	FIN: 128.905	CIRCLING HGT RELATED TO AD ELEV
	TWR: 118.305 118.705	DIST IN NM. ELEV, ALT AND HGT IN FT
	GND: 121.605	SCALE 1:200 000 VAR 4°E (2020)

TRANSITION ALTITUDE
7000

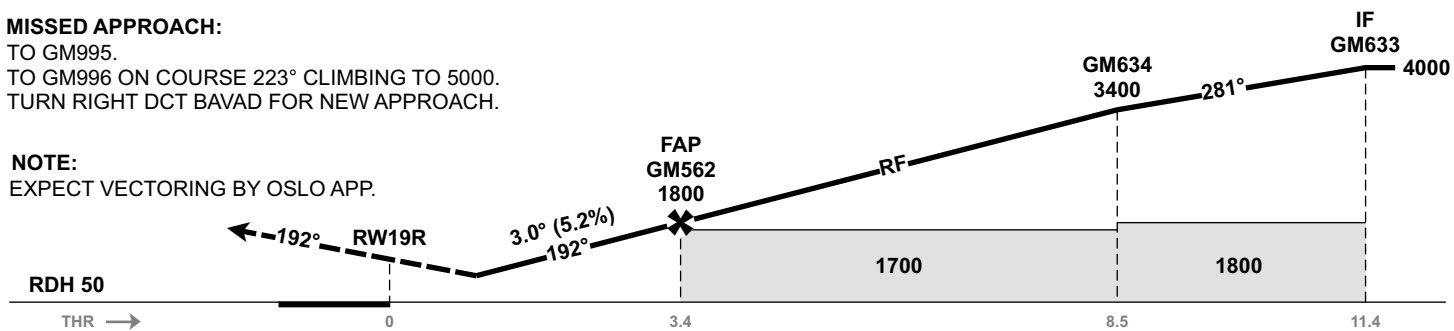
ATS AIRSPACE CLASSIFICATION: REF ENR 1.4



DIST TO RW19R	9	8	7	6	5	4	3	2
ALT (HGT)	-	-	-	-	-	-	-	-

MISSED APPROACH:
TO GM995.
TO GM996 ON COURSE 223° CLIMBING TO 5000.
TURN RIGHT DCT BAVAD FOR NEW APPROACH.

NOTE:
EXPECT VECTORING BY OSLO APP.



CAT OF ACFT		A	B	C	D
OCA (H) STRAIGHT- IN	RNP 0.3 2.5%*	1048 (372)			
	RNP 0.3 5.0%*	964 (288)			
CIRCLING		-	-	-	-

NOTE: *MNM MISSED APCH CLIMB GRADIENT.

CHANGES: MISSED APCH, EDITORIALS.