

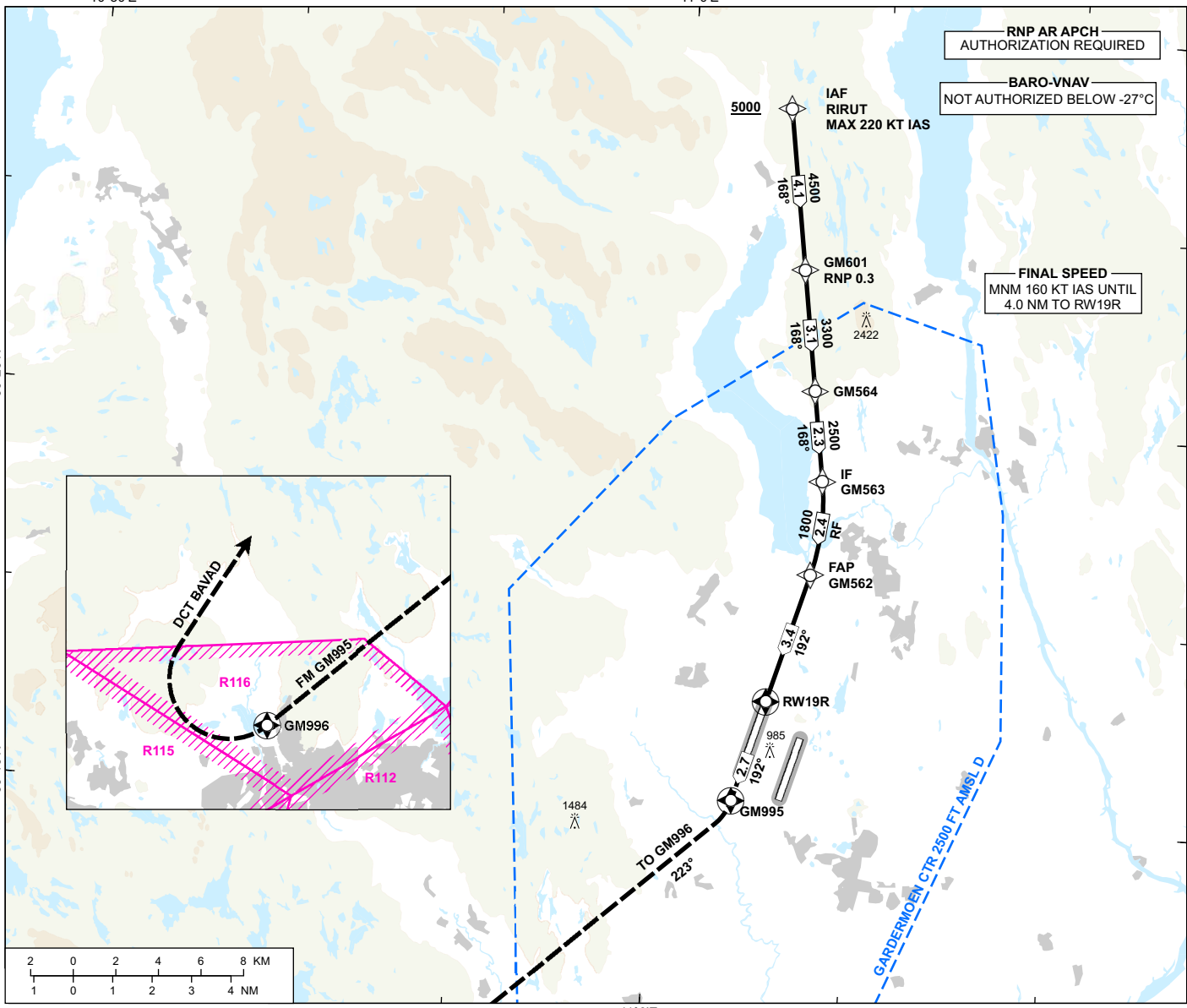
**INSTRUMENT APPROACH CHART - ICAO**

**OSLO  
GARDERMOEN**

**RNP N RWY 19R (AR)**

TRANSITION ALTITUDE  
7000

<p>MSA 25 NM ARP</p>	ATIS: 126.130	AD ELEV: 682
	APP: 118.480 120.455	THR ELEV: 676
	DIR: 136.405 119.980	HGT RELATED TO THR 19R
	FIN: 128.905	CIRCLING HGT RELATED TO AD ELEV
	TWR: 118.305 118.705	DIST IN NM. ELEV, ALT AND HGT IN FT
	GND: 121.605	SCALE 1:300 000    VAR 4°E (2020)



DIST TO RW19R	9	8	7	6	5	4	3	2
ALT (HGT)	-	-	-	-	-	-	-	-

**MISSED APPROACH:**  
CONTINUOUS CLIMB TO 5000.  
TO GM995.  
TO GM996 ON COURSE 223°.  
TURN RIGHT DCT BAVAD FOR NEW APCH.

**NOTE:**  
EXPECT VECTORING BY OSLO APP.



THR →	0	3.4	5.8	
CAT OF ACFT	A	B	C	D
OCA (H)	RNP 0.3 (2.5%*)	1048 (372)		
STRAIGHT-IN	RNP 0.3 (5.0%*)	964 (288)		
CIRCLING	-	-		

**NOTE:** \*MNM MISSED APCH CLIMB GRADIENT.

ATS AIRSPACE CLASSIFICATION: REF ENR 1.4

CHANGES: MISSED APCH. EDITORIALS.