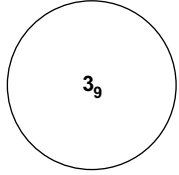


# INSTRUMENT APPROACH CHART - ICAO

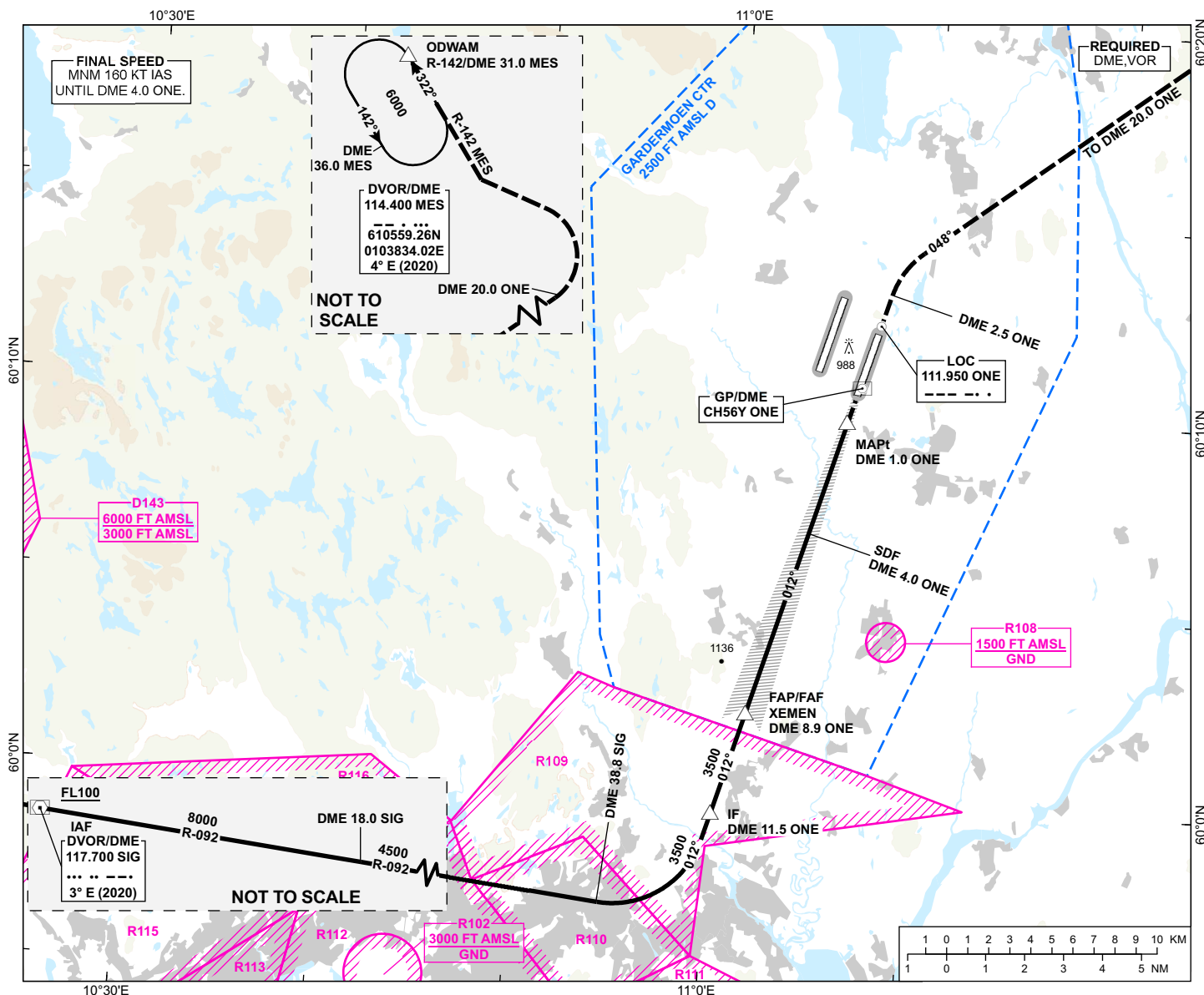
## OSLO GARDEMOEN

ILS X or LOC X RWY 01R CAT II & III

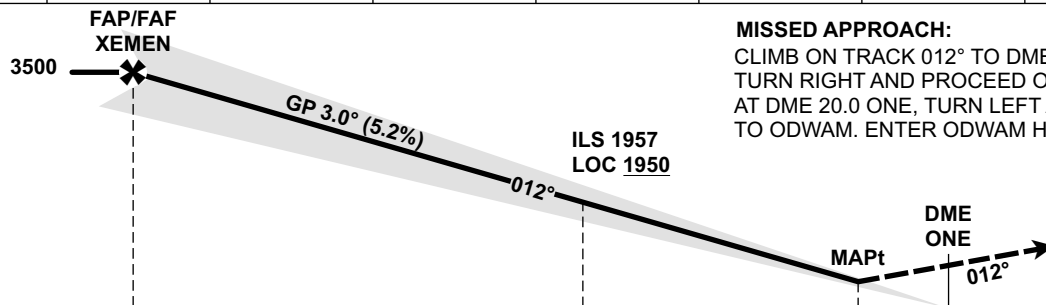
 <p>MSA 25 NM ARP</p>	ATIS: 126.130	AD ELEV: 682
	APP: 118.480 120.455	THR ELEV: 671
	DIR: 136.405 (119.980)	HGT RELATED TO THR 01R
	FIN: 128.905	CIRCLING HGT RELATED TO AD ELEV
	TWR: 120.105 (123.330)	DIST IN NM. ELEV, ALT AND HGT IN FT
	GND: 121.905	SCALE 1:300 000    VAR 4°E (2020)

TRANSITION ALTITUDE  
7000

ATS AIRSPACE CLASSIFICATION: REF ENR 1.4



DIST TO ONE	9	8	7	6	5	4	3	2
ALT (HGT)	-	3220 (2549)	2900 (2229)	2590 (1919)	2270 (1599)	1950 (1279)	1630 (959)	1310 (639)



ILS RDH 50

← DME (ONE)  
← THR

CAT OF ACFT		A	B	C	D
OCA (H) STRAIGHT- IN	CAT I	850 (179)	862 (191)	870 (199)	881 (210)
	CAT II	(50)	(60)	(72)	(84)
	LOC	990 (319)			
CIRCLING		1280 (598)	1530 (848)	1630 (948)	

NOTE: CIRCLING E OF RWY ONLY.

CHANGES: NEW PROCEDURE.