

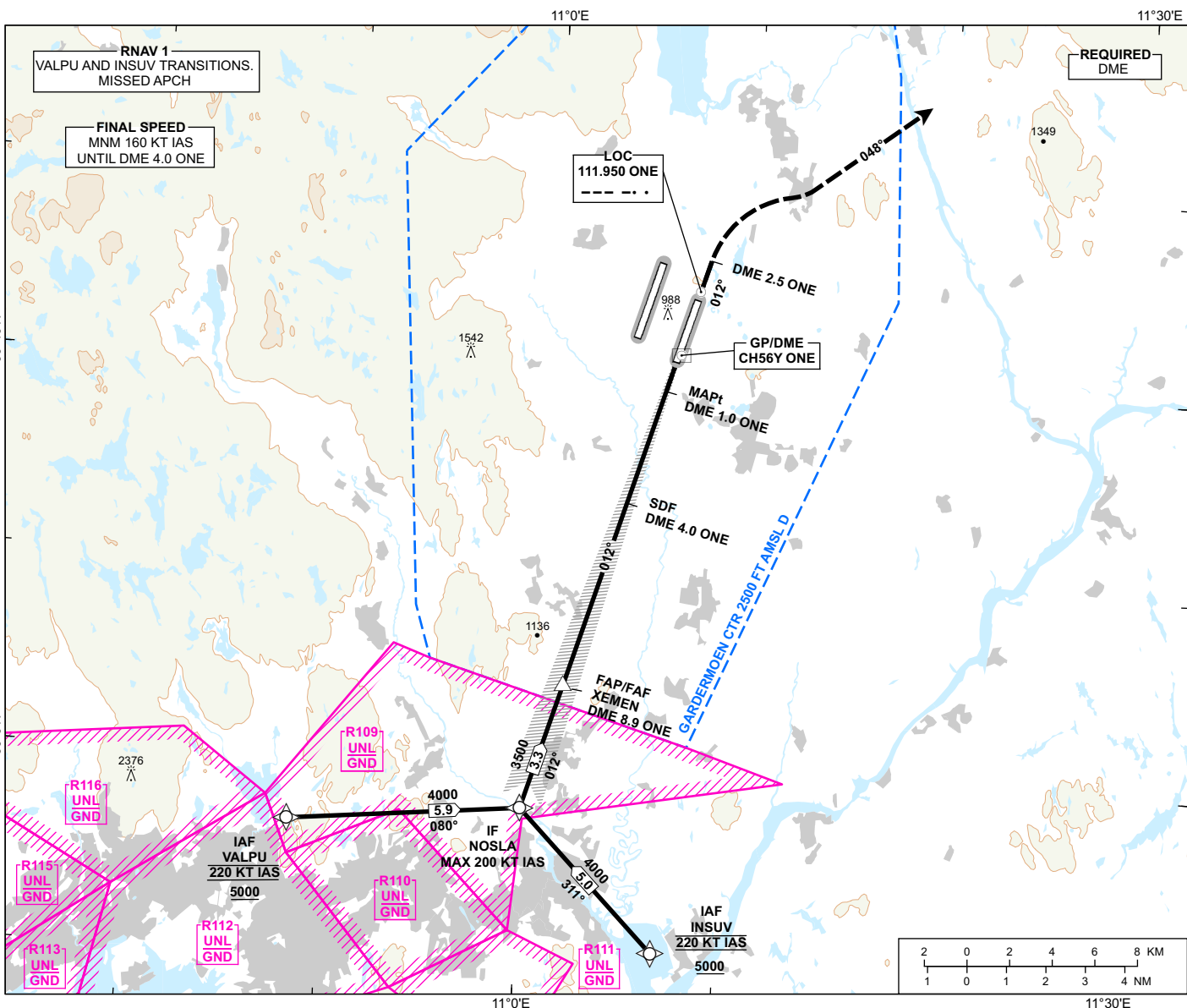
INSTRUMENT APPROACH CHART - ICAO

**OSLO
GARDERMOEN**

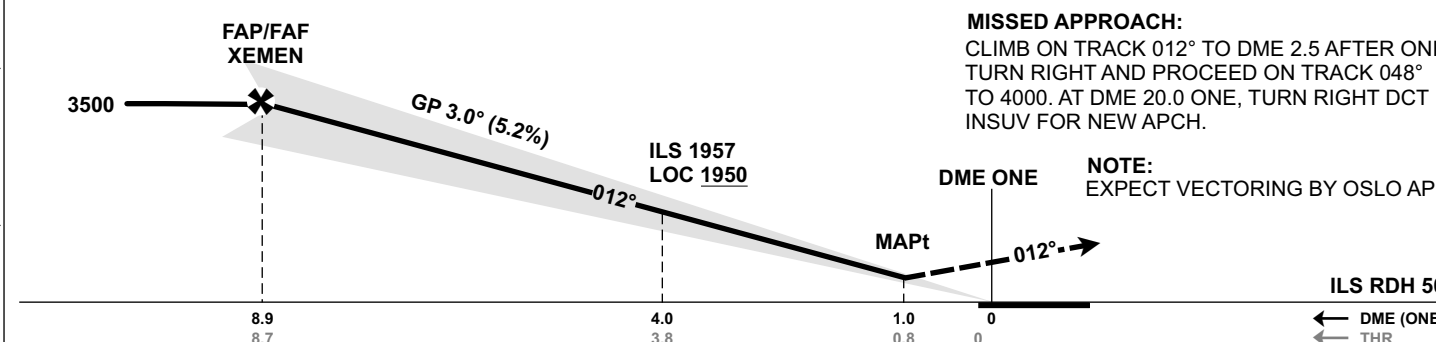
ILS Y or LOC Y RWY 01R CAT II & III

**TRANSITION ALTITUDE
7000**

<p>MSA 25 NM GRM</p>	ATIS: 126.130 APP: 118.480 120.455 DIR: 136.405 (119.980) FIN: 128.905 TWR: 120.105 (123.330) GND: 121.905	AD ELEV: 681 THR ELEV: 670 HGT RELATED TO THR 01R CIRCLING HGT RELATED TO AD ELEV DIST IN NM. ELEV, ALT AND HGT IN FT SCALE 1:300 000 VAR 4° E (2020)
----------------------	---	---



DIST TO ONE	9	8	7	6	5	4	3	2
ALT (HGT)	-	3220 (2550)	2900 (2230)	2590 (1920)	2270 (1600)	1950 (1280)	1630 (960)	1310 (640)



CAT OF ACFT		A	B	C	D
OCA (H) STRAIGHT- IN	CAT I	849 (179)	861 (191)	869 (199)	880 (210)
	CAT II	(50)	(60)	(72)	(84)
	LOC	990 (320)			
CIRCLING		1280 (599)	1530 (849)	1630 (949)	

NOTE: CAT IIIB APPROVED. CIRCLING E OF RWY ONLY.

CHANGES: PROCEDURE NAME, MISSED APCH, EDITORIALS.

ATS AIRSPACE CLASSIFICATION: REF ENR 1.4