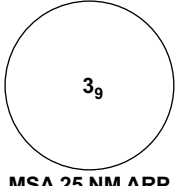


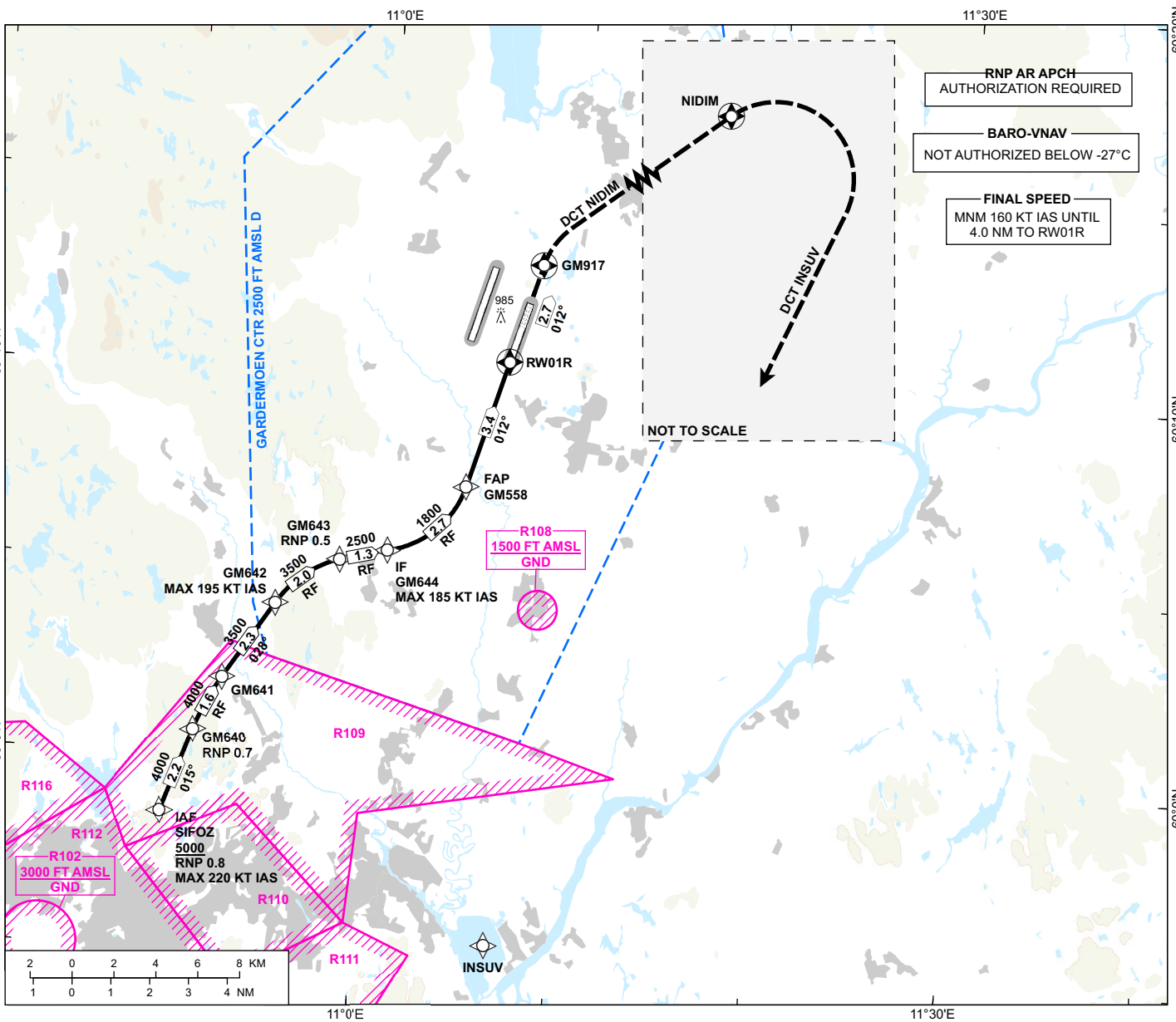
# INSTRUMENT APPROACH CHART - ICAO

**OSLO  
GARDERMOEN**

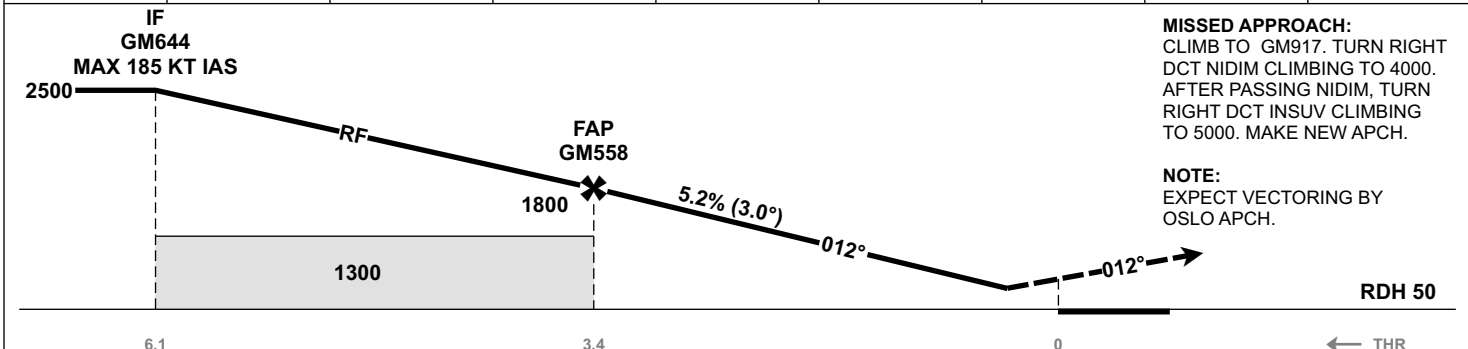
**RNP 0 RWY 01R (AR)**

TRANSITION ALTITUDE  
**7000**

 <p>MSA 25 NM ARP</p>	ATIS: 126.130	AD ELEV: 682
	APP: 118.480 120.455	THR ELEV: 671
	DIR: 136.405 119.980	HGT RELATED TO THR 01R
	FIN: 128.905	CIRCLING HGT RELATED TO AD ELEV
	TWR: 120.105 123.330	DIST IN NM. ELEV, ALT AND HGT IN FT
	GND: 121.905	SCALE 1:300 000    VAR 4°E (2020)



DIST TO RW01R	9	8	7	6	5	4	3	2
ALT (HGT)	-	-	-	-	-	-	-	-



**MISSED APPROACH:**  
CLIMB TO GM917. TURN RIGHT DCT NIDIM CLIMBING TO 4000. AFTER PASSING NIDIM, TURN RIGHT DCT INSUV CLIMBING TO 5000. MAKE NEW APCH.

**NOTE:**  
EXPECT VECTORING BY OSLO APCH.

CAT OF ACFT		A	B	C	D
OCA (H) STRAIGHT- IN	RNP 0.3 (2.5%*)	1007 (336)	1027 (356)	1046 (375)	1065 (394)
	RNP 0.3 (5.0%*)	955 (336)	980 (309)	998 (327)	1021 (350)
CIRCLING		1280 (598)		1530 (848)	1630 (948)

**NOTE:** CIRCLING E OF AD ONLY. \*MNM MISSED APCH CLIMB GRADIENT.

CHANGES: MISSED APCH.

ATS AIRSPACE CLASSIFICATION: REF ENR 1.4