

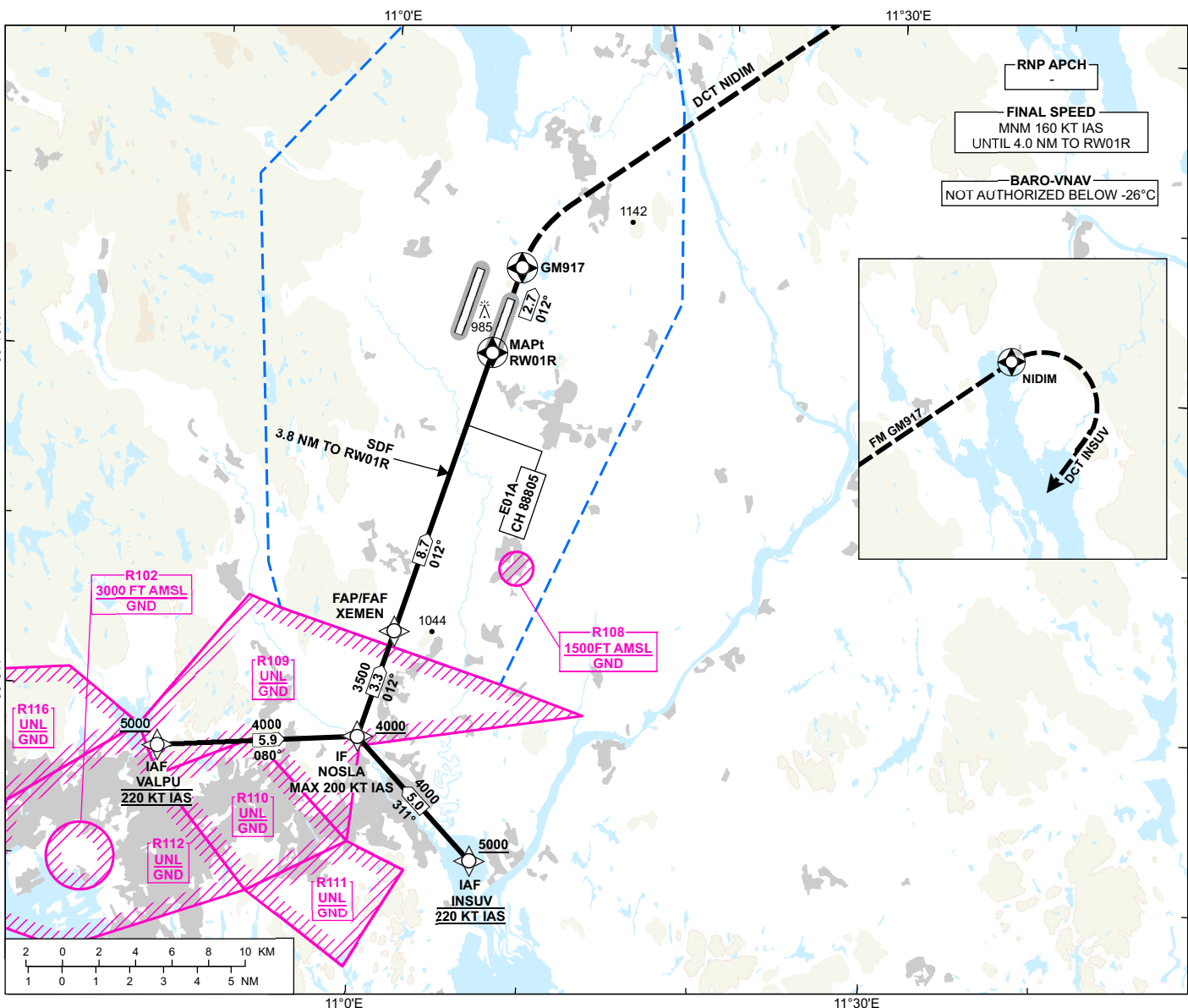
INSTRUMENT APPROACH CHART - ICAO

**OSLO
GARDERMOEN**

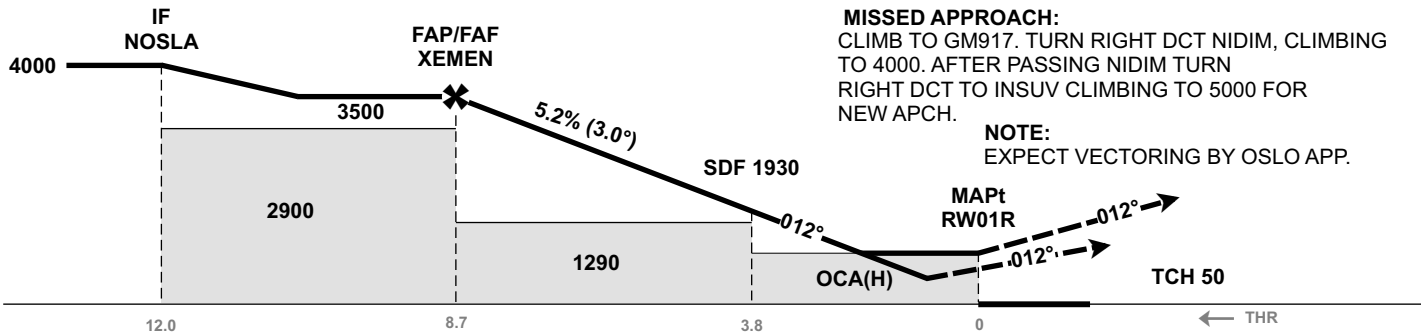
RNP Z RWY 01R

TRANSITION ALTITUDE
7000

<p>MSA 25 NM ARP</p>	ATIS: 126.130	AD ELEV: 682
	APP: 118.480 120.455	THR ELEV: 671
	DIR: 136.405 (119.980)	HGT RELATED TO THR RWY01R
	FIN: 128.905	CIRCLING HGT RELATED TO AD ELEV
	TWR: 120.105 (123.330)	DIST IN NM. ELEV, ALT AND HGT IN FT
	GND: 121.905	SCALE 1:350 000



DIST TO RW01R	9	8	7	6	5	4	3	2
ALT (HGT)	-	3270 (2599)	2950 (2279)	2640 (1969)	2320 (1642)	2000 (1329)	1680 (1009)	1360 (689)



CAT OF ACFT		A	B	C	D
OCA (H) STRAIGHT- IN	LPV	850 (179)	862 (191)	870 (199)	881 (210)
	LNAV/VNAV	970 (299)	990 (319)	1010 (339)	1030 (359)
	LNAV	1230 (559)			
CIRCLING		1280 (598)		1530 (848)	1630 (948)

NOTE: CIRCLING E OF RWY ONLY.

CHANGES: MISSED APCH, EDITORIALS.

ATS AIRSPACE CLASSIFICATION: REF ENR 1.4