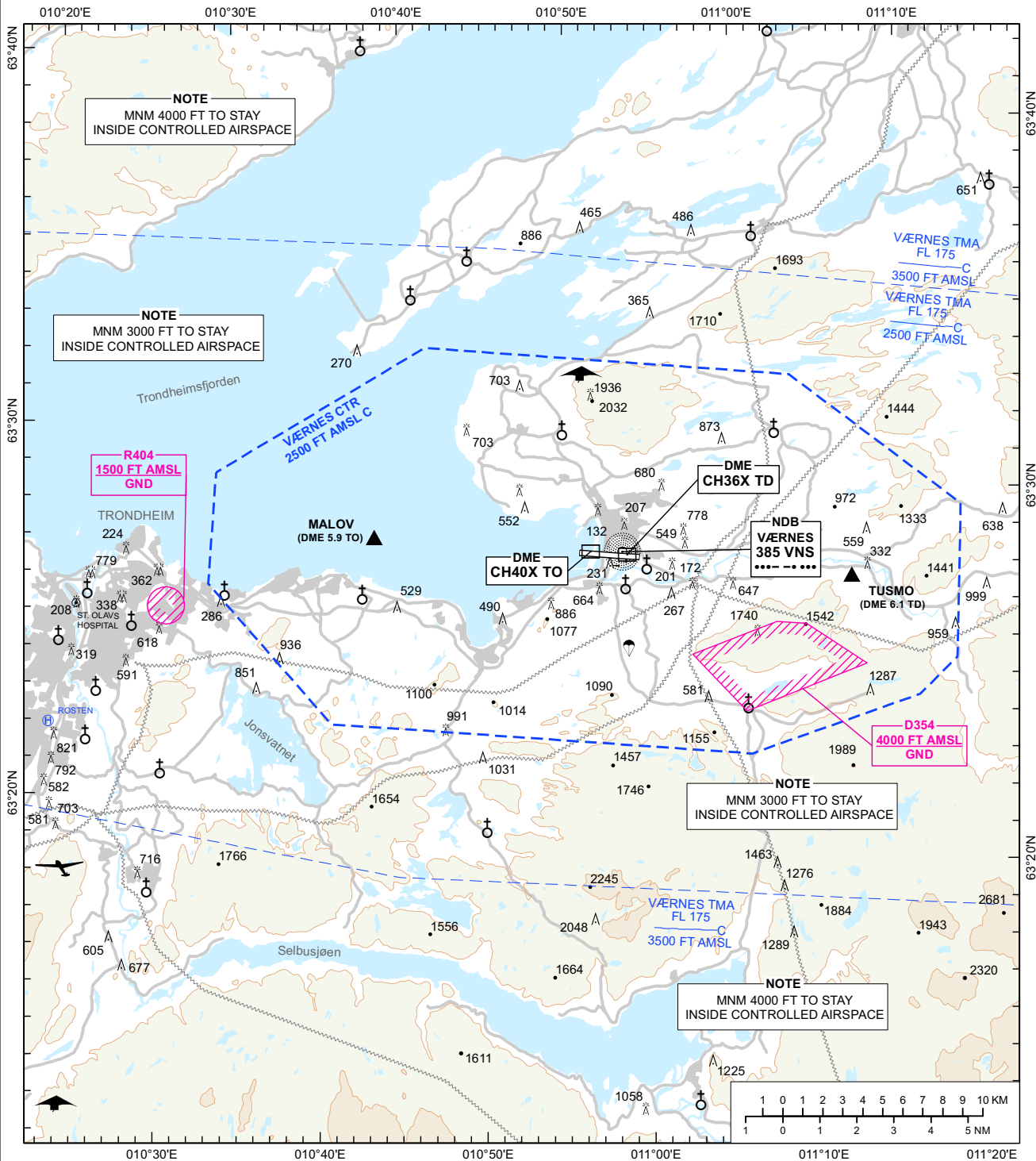


VAC - VISUAL APPROACH CHART PLAN VIEW SCALE:1:300 000

ATIS: 127.555	AERODROME ELEVATION: 64 FT	ELEV, ALT AND HGT IN FT	<b>TRONDHEIM VÆRNES NORWAY</b>
APP: 118.605 119.155	OBSTACLES LESS THAN 100 FT GND ARE NORMALLY NOT SHOWN		
TWR: 119.405 133.755	MAGNETIC VARIATION: 4° E (2020)		
GND: 121.605	TRANSITION ALTITUDE: 7000	ONLY MAJOR POWER LINES SHOWN	



CHANGES: VÆRNES CTR, TMA, EDITORIALS.

**VISUAL APCH PROCEDURES**

IN ORDER TO REDUCE NOISE DISTURBANCES AND AVOID VFR TRAFFIC, THE FOLLOWING PROCEDURES APPLY WHEN MAKING VISUAL APPROACHES TO RWY 09 OR RWY 27:

UNLESS OTHERWISE AUTHORIZED OR DIRECTED BY ATC, AN AIRCRAFT CLEARED FOR VISUAL APPROACH SHALL:

- A) EXECUTE THE APPROACH SO AS TO BE ESTABLISHED ON FINAL APPROACH TRACK OUTSIDE
  - RWY 09: DME 5.9 TO - MALOV
  - RWY 27: DME 6.1 TD - TUSMO
- B) MAINTAIN MNM 2500 FT AMSL UNTIL STARTING TURN TO FINAL, AND ESTABLISH A FINAL APPROACH DESCENT NOT BELOW ILS GLIDESLOPE/PAPI ONSLOPE SIGNAL
- C) WHEN CLEARED BY ATC SHORTER VISUAL APPROACHES ARE ALLOWED FROM THE NORTH TO RWY 09 AND FOR PROPELLER AIRCRAFT TO 2 NM FINAL RWY 27.

NOTE: INFORMATION PERTAINING TO VFR FLIGHT INCLUDED

ATS AIRSPACE CLASSIFICATION  
TMA, CTR: CLASS C  
UNCONTROLLED AIRSPACE: CLASS G  
SEE ALSO ENR 1.4  
LEGENDS: REF GEN 2.3

PAPI DUAL RWY 09: 3.0°, MEHT 52 FT.  
PAPI DUAL RWY 27: 3.4°, MEHT 56 FT