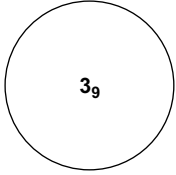


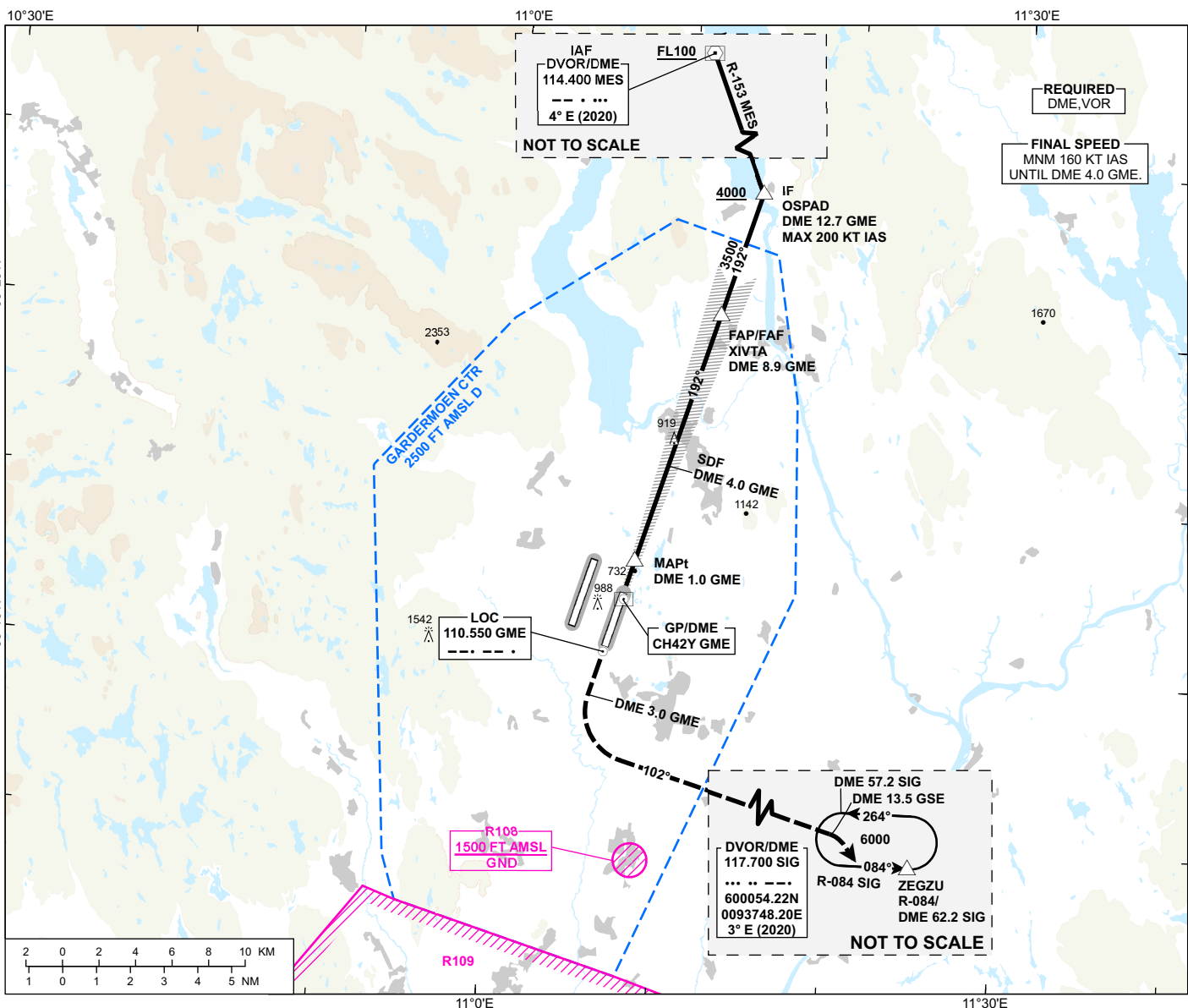
INSTRUMENT APPROACH CHART - ICAO

**OSLO
GARDERMOEN**

ILS X or LOC X RWY 19L CAT II & III

 MSA 25 NM ARP	ATIS: 126.130	AD ELEV: 682
	APP: 118.480 120.455	THR ELEV: 682
	DIR: 136.405 (119.980)	HGT RELATED TO THR 19L
	FIN: 128.905	CIRCLING HGT RELATED TO AD ELEV
	TWR: 120.105 (123.330)	DIST IN NM. ELEV, ALT AND HGT IN FT
	GND: 121.905	SCALE 1:350 000 VAR 4°E (2020)

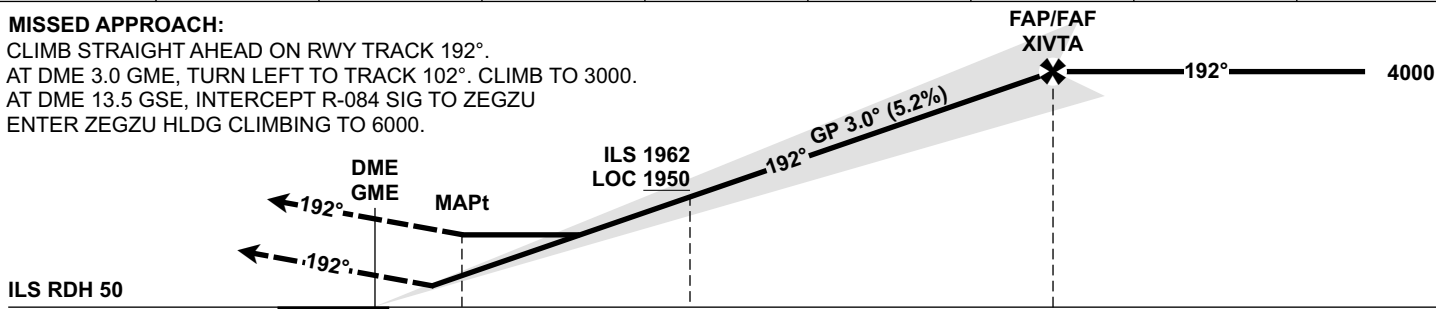
TRANSITION ALTITUDE 7000



DIST TO GME	8	7	6	5	4	3	2	1
ALT (HGT)	3230 (2548)	2910 (2228)	2590 (1908)	2270 (1588)	1950 (1268)	1649 (958)	1320 (638)	1000 (318)

MISSED APPROACH:

CLIMB STRAIGHT AHEAD ON RWY TRACK 192°. AT DME 3.0 GME, TURN LEFT TO TRACK 102°. CLIMB TO 3000. AT DME 13.5 GSE, INTERCEPT R-084 SIG TO ZEGZU ENTER ZEGZU HLDG CLIMBING TO 6000.



ILS RDH 50	DME (GME) →	THR →	0	1.0	4.0	8.9
			0	0.8	3.8	8.7
CAT OF ACFT		A	B	C	D	
OCA (H) STRAIGHT- IN	CAT I	819 (137)	827 (145)	842 (160)	858 (176)	
	CAT II	(49)	(59)	(72)	(85)	
	LOC	1030 (348)				
CIRCLING		1280 (598)	1530 (848)	1630 (948)		

NOTE: CIRCLING E OF RWY ONLY.

ATS AIRSPACE CLASSIFICATION: REF ENR 1.4

CHANGES: NEW PROCEDURE.